



Montgomery-Gibbs Executive Airport

FACT SHEET

History

Montgomery-Gibbs Executive Airport was founded by William "Bill" Gibbs in 1937 as a center for flight training, sightseeing, and other aerial activities. After serving as a training base for Army Air Corps cadets during WW2, the City of San Diego acquired the airport from Gibbs in 1947.

Today, Montgomery-Gibbs Executive Airport is a busy general aviation airport and an important regional asset. General aviation encompasses all aviation except air carrier and military. The types of general aviation aircraft that operate at Montgomery-Gibbs Executive Airport include private, corporate, charter, air ambulance, law enforcement, fire rescue, flight training, and light cargo.

The FAA has classified Montgomery-Gibbs Executive Airport as a reliever airport for San Diego International Airport. A reliever airport is an airport that serves general aviation aircraft that might otherwise use a congested air carrier airport. Airline passengers benefit by experiencing fewer delays due to air traffic congestion. This makes reliever airports an integral part of the national air transportation system.

BENEFITS TO THE LOCAL COMMUNITY

- REDUCES CONGESTION AT SAN DIEGO INT'L AIRPORT
- EDUCATIONAL OPPORTUNITIES FOR LOCAL YOUTH
- MAKES SAN DIEGO MORE ATTRACTIVE FOR BUSINESS
- EMERGENCY RESPONSE BASE FOR BOTH SDPD AND SDFD
- AIR AMBULANCE FLIGHTS FOR PATIENTS IN NEED

NOISE ABATEMENT

In addition to ongoing educational programs to inform pilots how to reduce noise impacts on the local community, Montgomery-Gibbs Executive Airport has the following operating restrictions for aircraft taking-off or landing at the field:

- 6:30am to 11:30pm: Aircraft are limited to 88 decibels over residential areas
- 11:30pm to 6:30am: Aircraft are limited to 77 decibels over residential areas, and Touch & Go landings are prohibited
- Police, Fire, Medical, and Search & Rescue aircraft are exempted
- \$1,600 in fines issued for violations of policy in 2019

Economic Impacts

Montgomery-Gibbs Executive Airport is centrally located within San Diego, the 8th largest city in the nation, and well connected to the region's transport links.

In addition to companies located directly on the airport, many local businesses use the airport to transport employees, equipment, and other items faster than they can at the congested San Diego International Airport. These secondary and induced effects multiply the economic benefits the airport provides.

Community Employment (2016):

- Direct effect: 740 jobs
- Secondary & Induced: 650 jobs
- Total: 1,390 jobs

Local Labor Income (2016):

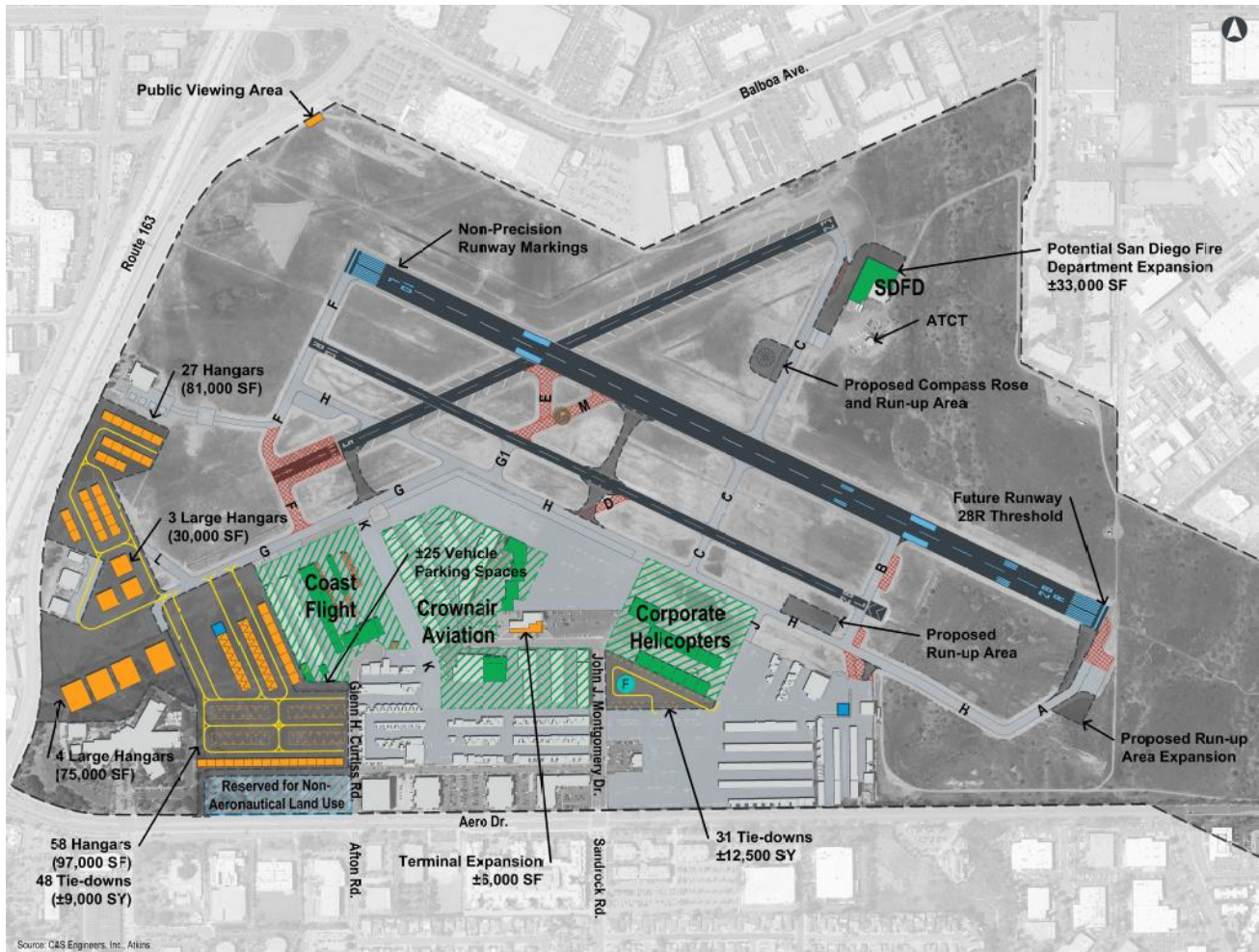
- Direct Effects: \$38,486,428
- Secondary & Induced: \$37,224,862
- Total: \$75,711,290

Economic Output (2016):

- Direct Effects: \$83,945,313
- Secondary & Induced: \$95,384,639
- Total: \$179,329,952



Montgomery-Gibbs Executive Airport Master Plan Update



What is a Master Plan?

In general, an airport master plan is intended to be a document which identifies and then plans for potential future facility development well in advance of the actual need for these facilities. This is done to ensure that the airport can coordinate project approvals, design, financing, and construction to avoid experiencing detrimental effects due to inadequate facilities.

Montgomery-Gibbs Executive Airport's current master plan was approved in 1980, and has become increasingly outdated and unreflective of the airport's current state. The master plan update process was undertaken to reevaluate the airport's capabilities and role, to forecast future aviation demand, and to plan for the development of new and expanded facilities that may be required to meet that demand. The ultimate goal of the master plan update is to provide systematic guidelines for the Montgomery-Gibbs Executive Airport's maintenance, development, and operations as it moves into the 21st century.

THE MASTER PLAN UPDATE PROCESS

The master plan update process was developed in four phases with the support of the Master Plan Advisory Committee (PAC). The PAC was a public group having a vested interest in the airport and the community as a whole, which included representatives from the airport administration, airport tenants, flight schools, the Federal Aviation Administration (FAA), airport users, the City of San Diego Planning Department, the San Diego Regional Airport Authority, and representatives from communities of Serra Mesa, Clairmont, Tierrasanta, and Kearney Mesa. Potential future facility needs identified include:

- Increased space for hangars and tiedowns
- Construction of wash racks for aircraft cleaning
- Elimination of the displaced threshold on Runway 28R
- Relocation of several taxiways to enhance safety
- Expansion of the airport terminal for additional office space
- Construction of a public viewing area

Although several potential projects were identified, Montgomery-Gibbs Executive Airport is intended to remain as a general aviation airport with no scheduled air service for the foreseeable future.