

Pure Water San Diego Phase 1 Update

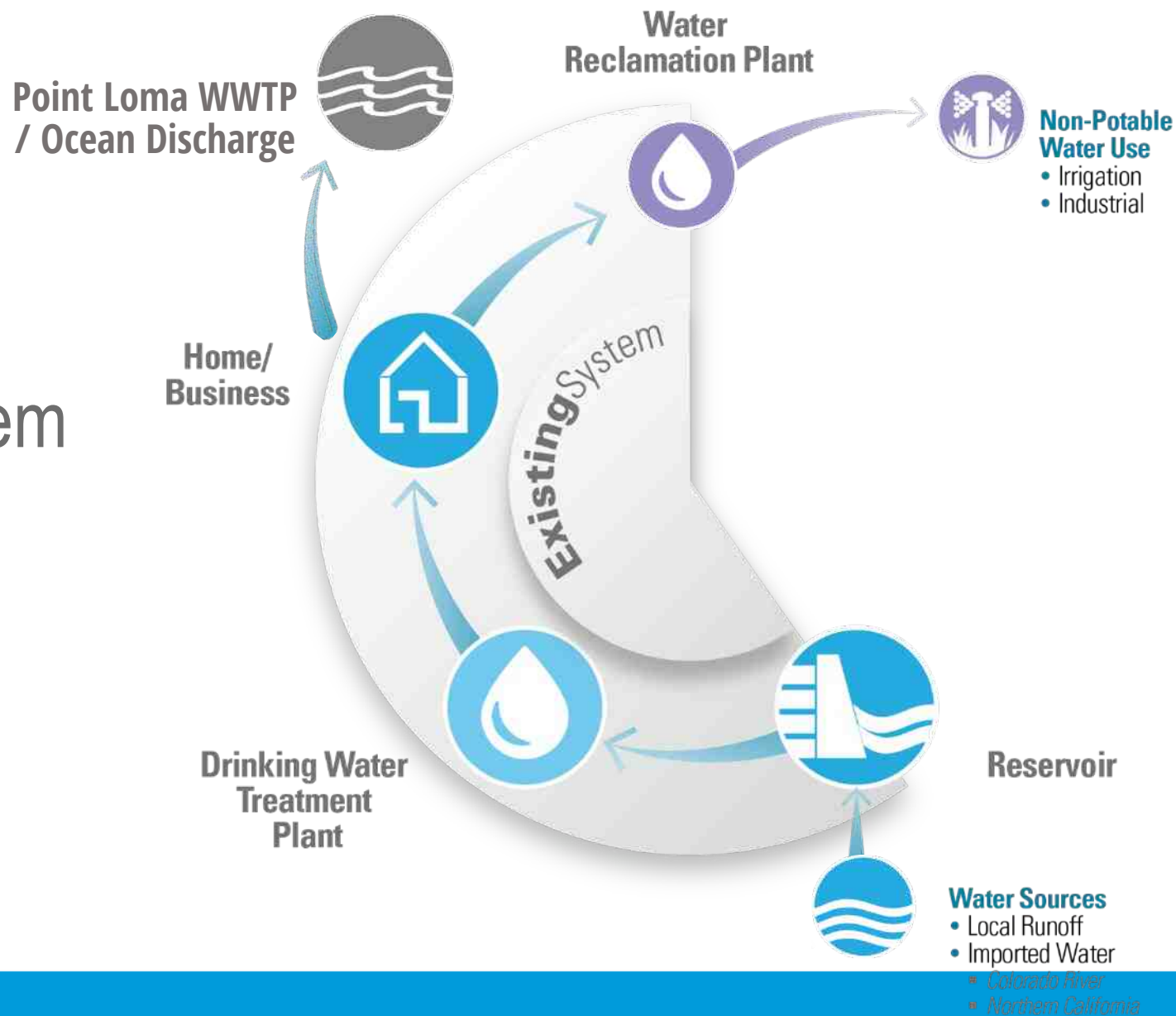
UCPG

John Stufflebean, Steve Lindsay, Clem Wassenberg
Feb. 9, 2021

San Diego's Water Supply System

Existing System...

Primarily a Single-Use System

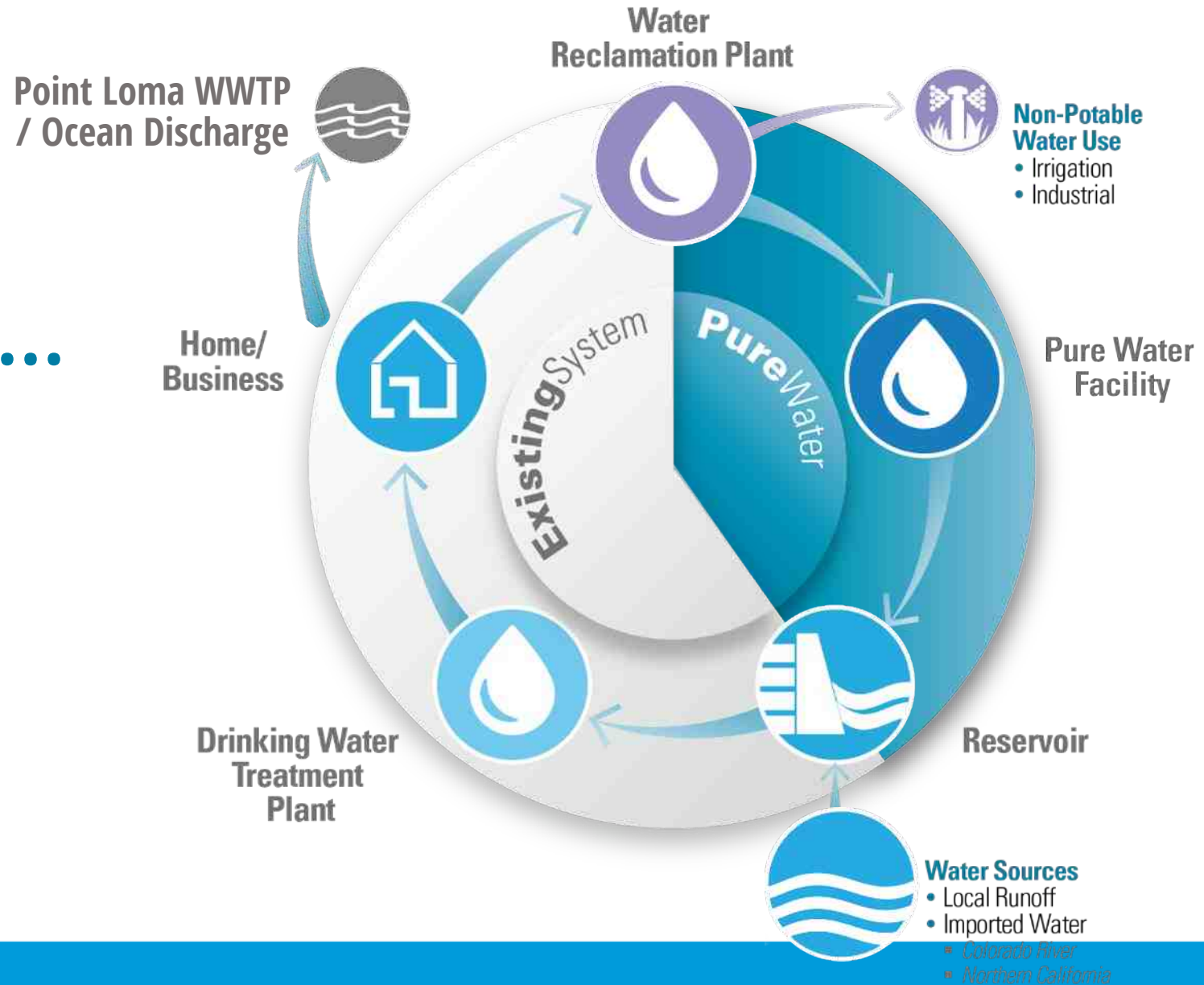




San Diego's Water Supply System

Pure Water...

Completes Our
Water Cycle



Pure Water
will produce
1/3
of your water
locally

Phase 1

- 30 mgd
- North City PWF to Miramar



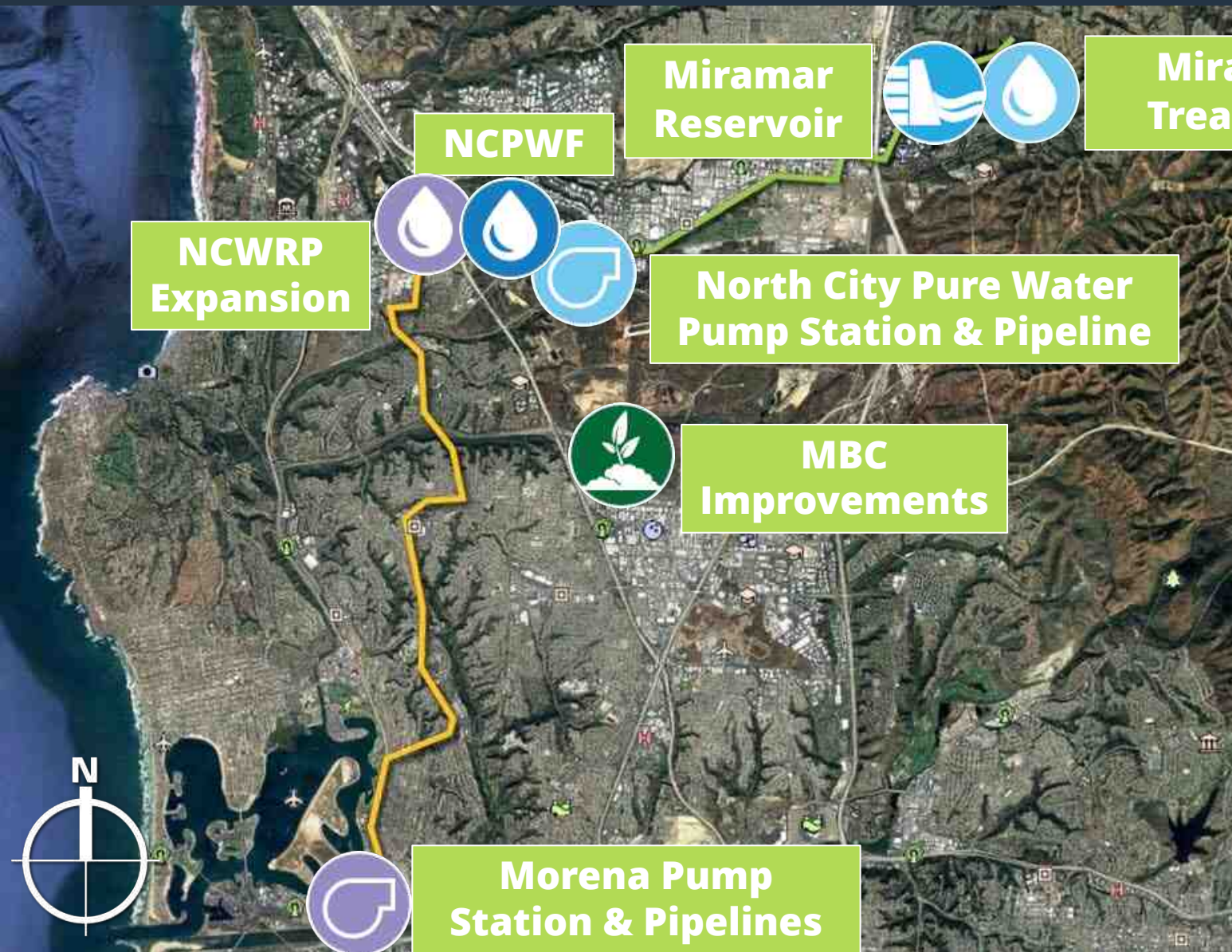
Pure Water
will produce
1/3
of your water
locally

Phase 2

- 2035 Completion
- 53 mgd
- Central Area PWF to San Vicente or Lake Murray



SD Phase 1 Projects



Phase 1 – North City will produce 30 mgd of purified water

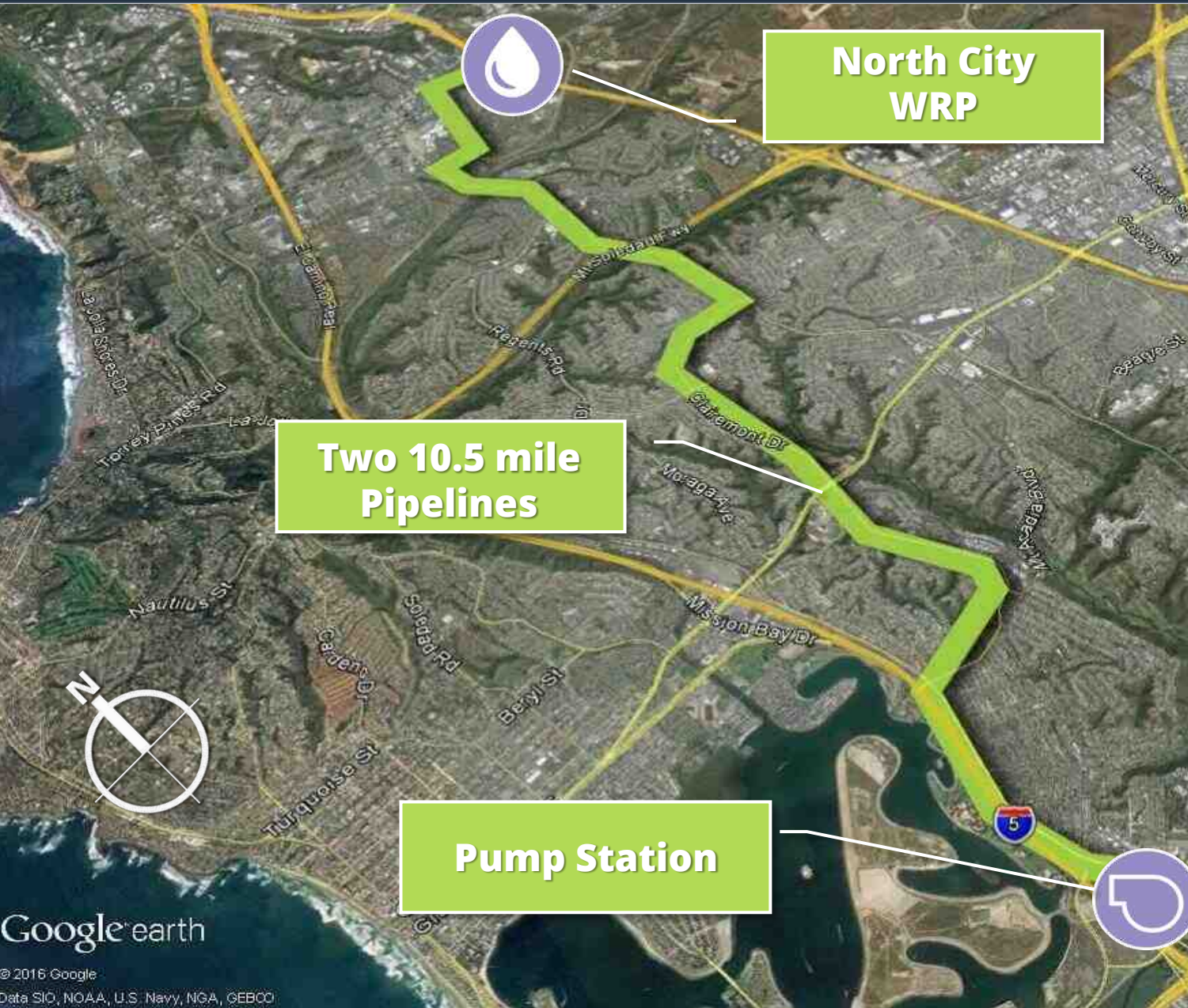
100% Design Completed on all Phase 1 projects

MBC = Metro Biosolids Center

NCWRP = North City Water Reclamation Plant

NCPWF = North City Pure Water Facility

SD Morena Pump Station and Pipelines



- Conveys wastewater to North City Water Reclamation Plant (WRP)
- Supports Phase 1 purified water and recycled water production
- Trenchless construction will be used to avoid:
 - *environmentally sensitive areas*
 - *freeway crossings*
- Construction begins in early 2021

SD Morena Northern Pipeline & Tunnels

- Two pipelines will start at Genesee/SR-52 and continue through UC to the NCWRP
 - *One transports wastewater to the NCWRP (N)*
 - *One transports brine from the NCPWF to PLWTP (S)*
- Three short tunnels (approx. 1,000 ft. long) at SR-52, Rose Canyon (Genesee), and I-805
- Morena alignment will also go through Clairemont and Bay Park/Morena communities



University City High School



Governor Drive

Nobel Athletic Area and Library

Standley Middle School



Genesee Avenue

 Pipeline
 Tunnel

Morena Pipeline - Northern Alignment and Tunnels

State Route 52 to Governor Drive

Construction Project Components:

- 4 miles of 48-inch force main
- 4 miles of 30-inch brine/centrate pipeline
- Tunnel crossing of Interstate 805
- Tunnel crossing at Rose Creek Canyon
- Tunnel crossing at the San Clemente Creek

Construction Segment Details:

- Night work, 7 p.m. to 5 a.m. (weekdays)
- Governor and Genesee intersection done in stages
- One lane of southbound traffic maintained
- No impacts to northbound Genesee



Westfield UTC

The Villas of Renaissance
Apartment Homes

Costa Verde Shopping Center

Towne Centre Drive

Nobel Drive

Valentia Apartments

Doyle Elementary School

University City High School

Rose Canyon

Genesee Avenue

Governor Drive

Standley Middle School

Pipeline

Tunnel

Morena Pipeline - Northern Alignment and Tunnels

Governor Drive to Nobel Drive

Construction Project Components:

- 4 miles of 48-inch force main
- 4 miles of 30-inch brine/centrate pipeline
- Tunnel crossing of Interstate 805
- Tunnel crossing at Rose Creek Canyon
- Tunnel crossing at the San Clemente Creek

Construction Segment Details:

- Day work on Nobel Drive, 8 a.m. to 4 p.m. (weekdays)
- 24/7 tunnel work (with adherence to noise requirements)
- Access and terrain maintained for Rose Canyon trail
- One week of no work between switching from night work to day work

North City Water
Reclamation Plant

Executive Drive

La Jolla Village Drive

La Jolla Crossroads



Westfield UTC

The Villas of Renaissance
Apartment Homes

Costa Verde Shopping Center

Nobel Drive

Valentia Apartments

Nobel Athletic
Area and Library

Doyle Elementary School

Genesee Avenue

University City High School

Pipeline

Tunnel

Morena Pipeline - Northern Alignment and Tunnels

Nobel Drive to La Jolla Village Drive

Construction Project Components:

- 4 miles of 48-inch force main
- 4 miles of 30-inch brine/centrate pipeline
- Tunnel crossing of Interstate 805
- Tunnel crossing at Rose Creek Canyon

Construction Segment Details:

- Night work on Genesee to Nobel, 7 p.m. to 5 a.m. (weekdays)
- One way westbound traffic on Nobel during construction hours
- Nobel intersection constructed in stages
- One week of no work between switching from night work to day work

Genesee Avenue

Towne Centre Drive

Embassy Suites

La Jolla Village Drive

Westfield UTC

Executive Drive



La Jolla Crossroads

La Jolla Gateway

Morena Pipeline - Northern Alignment and Tunnels

Towne Centre Drive

Construction Project Components:

- 4 miles of 48-inch force main
- 4 miles of 30-inch brine/centrate pipeline
- Tunnel crossing of Interstate 805

Construction Segment Details:

- Night work, 7 p.m. to 5 a.m. (weekdays)
- One lane in each direction open on Towne Centre Drive
- Access to Excalibur Way maintained throughout construction
- Stages of work on La Jolla Village Drive intersection

Pipeline

Tunnel

Pipeline

Tunnel

Future
North City
Pure Water Facility

The City of
SAN DIEGO

SD Pure Water
San Diego



North City Water
Reclamation Plant

Executive Drive

Judicial Drive

Towne Centre Drive

La Jolla Village Drive

Morena Pipeline - Northern Alignment and Tunnels

Executive Drive

Construction Project Components:

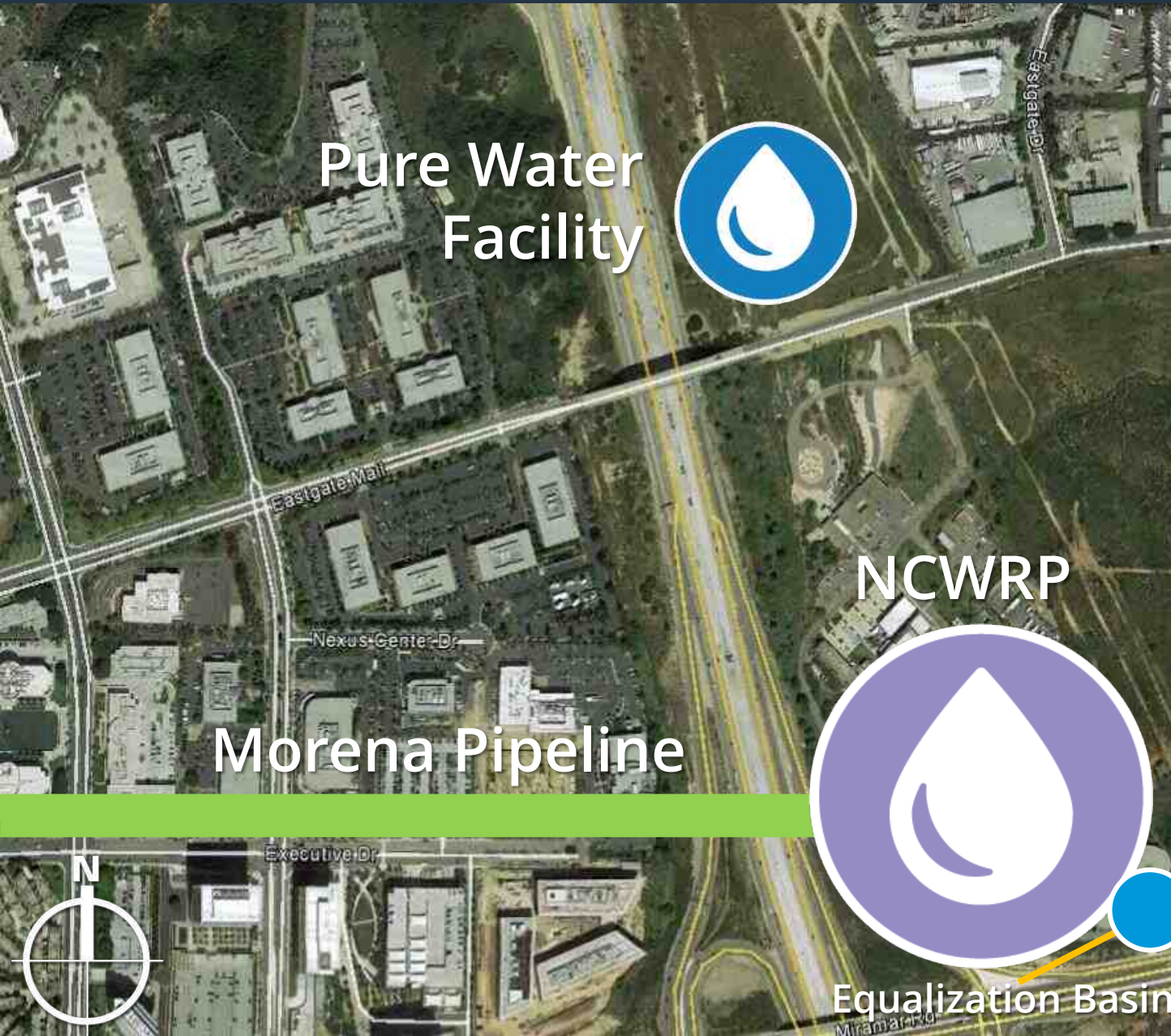
- 4 miles of 48-inch force main
- 4 miles of 30-inch brine/centrate pipeline
- Tunnel crossing of Interstate 805

Construction Segment Details:

- Night work, 7 p.m. to 5 a.m. (weekdays)
- Before Judicial Drive: work on westbound side
- After Judicial Drive: work on eastbound side
- Tunnel staging will be in landscaped median



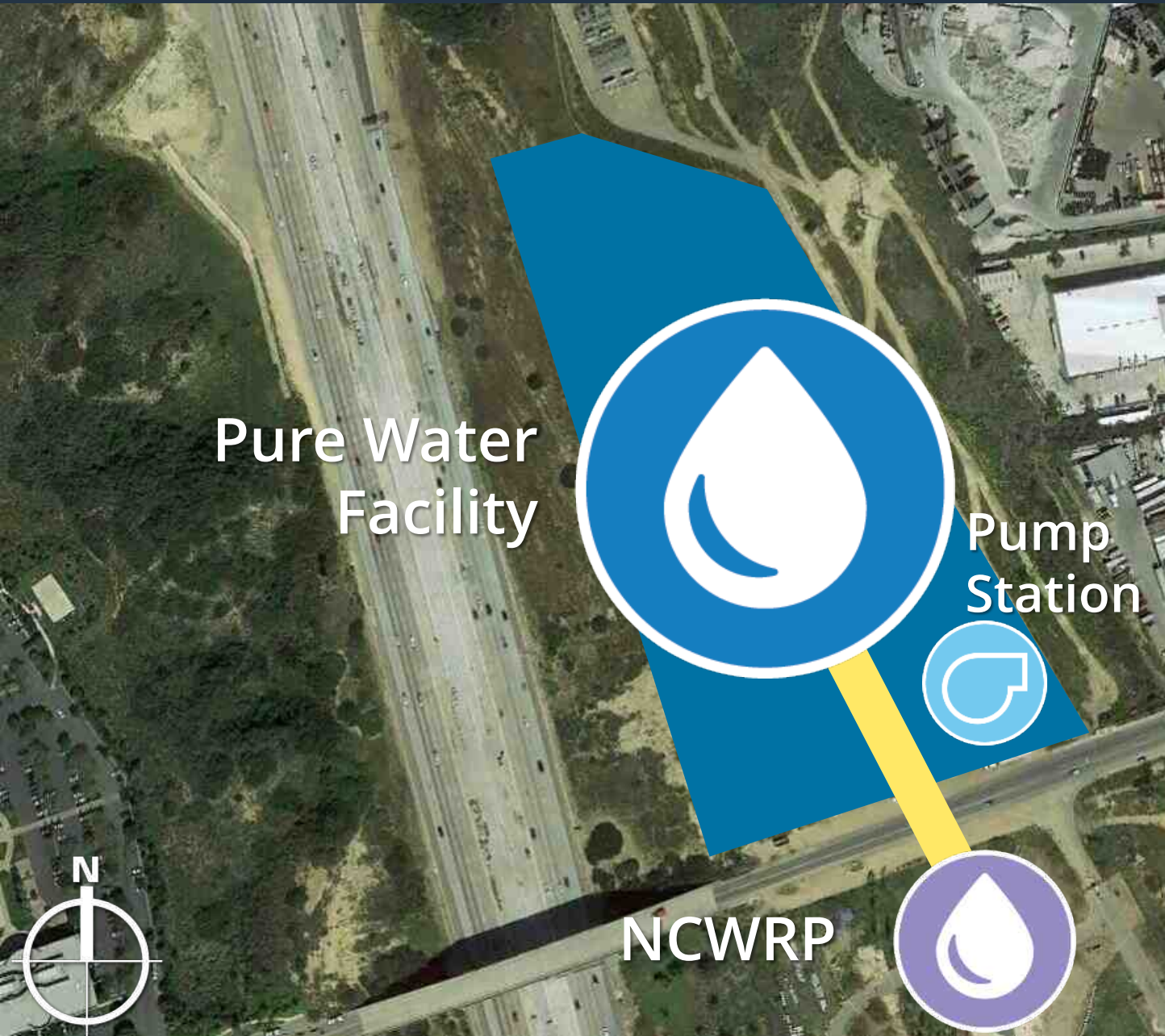
North City Water Reclamation Plant Expansion



- Treats wastewater to recycled water standards
- Expansion nearly doubles the amount of recycled water produced to meet needs of:
 - *Pure Water Facility*
 - *Recycled Water System*
- Early site work is being completed
- Construction begins in summer 2021



North City Pure Water Facility & Pump Station



- Treats recycled water to produce 30 mgd of purified water
- Includes a proven 5-step advanced water purification treatment process
- Construction begins in early 2021



North City Pure Water Facility



Ozonation



Biological
Activated
Carbon
Filters



Membrane
Filtration



Reverse
Osmosis



Ultraviolet
Disinfection
/Advanced
Oxidation



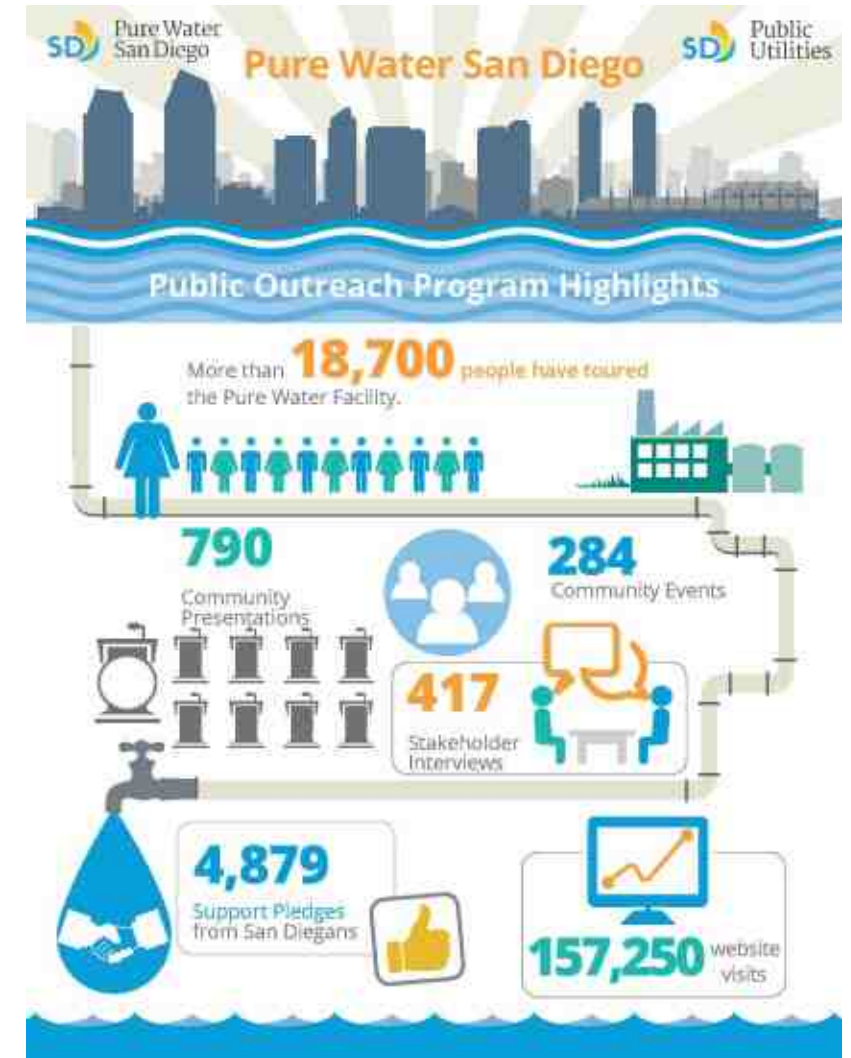
SD What You Can Expect

- “Block by block” road closures to through traffic; detours will be posted
 - *Access for residents, businesses and emergency vehicles will be maintained; some delays expected*
- Construction equipment and material staging areas along the alignment; staging areas will move along with construction
- Possible intersection closures due to weekend work
- Posted detours for bike lanes, sidewalks and trails
- No parking in construction zones
- Impacts such as noise, dust, bright lights and construction vehicle traffic during work hours



SD Project and Community Coordination

- Robust regional outreach and education program
 - *Commitment to keeping community informed*
 - *Variety of communication methods (in person, virtual, web, print) and structured notification process (meetings, mailers, doorhangers, etc.)*
 - *Multicultural and multilingual audience engagement*
- University City outreach
 - *Briefings to elected officials and community groups*
 - *Formation of UC Phase 1 Working Group (adopted 20+ recommendations)*
 - *Community specific e-blasts, local media articles and other advisories*
 - *Business and residential field outreach*
 - *Community liaison specifically for UC*



Phase 1 Construction – UC Community

Project/Construction Package	Anticipated Contractor Notice to Proceed	Anticipated Project Completion
North City Pure Water Facility & Pump Station	March 2021	2024
Morena Northern Pipeline & Tunnels	April 2021	2024
NCWRP Expansion, Influent Pump Station & Pipeline	July 2021	2024
Metro Biosolids Center Improvements	July 2021	2024
NCWRP Equalization Basin	September 2021	2023

Who Supports Pure Water?



SAN DIEGO
COASTKEEPER



SAN DIEGO COUNTY CHAPTER



CONNECT



SAN DIEGO
PORT TENANTS ASSOCIATION



**INDUSTRIAL
ENVIRONMENTAL
ASSOCIATION**
*Promoting Industry and
Protecting the Environment*



**BIRD ROCK
COFFEE ROASTERS**
CALIFORNIA





purewatersd.org
phase1.purewatersd.org



PureWaterSD



PureWaterSD



@PureWaterSD



PureWaterSD

Sign up for **construction updates** and take the **virtual tour**