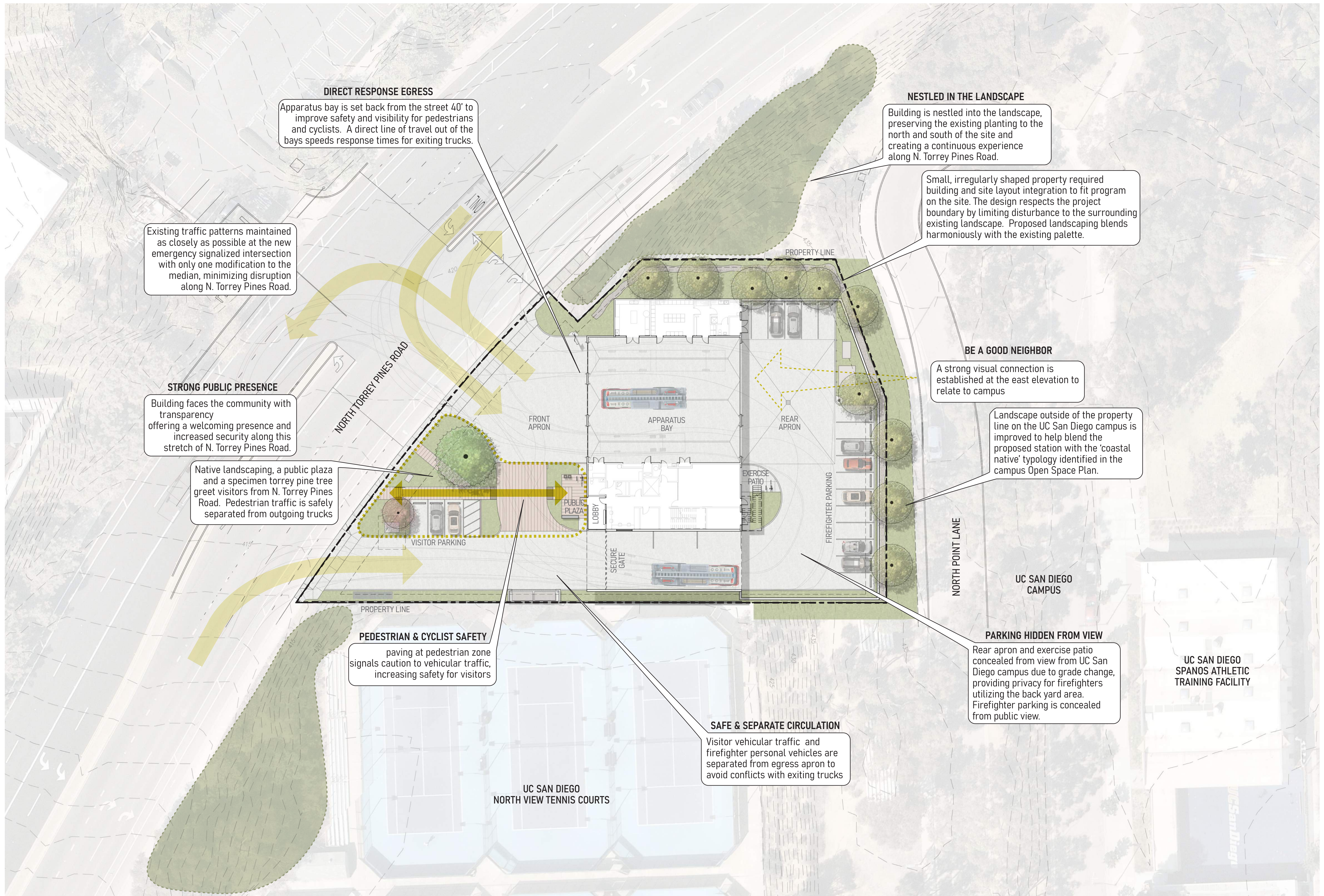


# **TORREY PINES FIRE STATION**

---

UNIVERSITY COMMUNITY PLANNING GROUP  
APRIL 12, 2022

# CONCEPTUAL SITE PLAN



**DIRECT RESPONSE EGRESS**

Apparatus bay is set back from the street 40' to improve safety and visibility for pedestrians and cyclists. A direct line of travel out of the bays speeds response times for exiting trucks.

**NESTLED IN THE LANDSCAPE**

Building is nestled into the landscape, preserving the existing planting to the north and south of the site and creating a continuous experience along N. Torrey Pines Road.

Existing traffic patterns maintained as closely as possible at the new emergency signalized intersection with only one modification to the median, minimizing disruption along N. Torrey Pines Road.

Small, irregularly shaped property required building and site layout integration to fit program on the site. The design respects the project boundary by limiting disturbance to the surrounding existing landscape. Proposed landscaping blends harmoniously with the existing palette.

**STRONG PUBLIC PRESENCE**

Building faces the community with transparency offering a welcoming presence and increased security along this stretch of N. Torrey Pines Road.

**BE A GOOD NEIGHBOR**

A strong visual connection is established at the east elevation to relate to campus

Native landscaping, a public plaza and a specimen torrey pine tree greet visitors from N. Torrey Pines Road. Pedestrian traffic is safely separated from outgoing trucks

Landscape outside of the property line on the UC San Diego campus is improved to help blend the proposed station with the 'coastal native' typology identified in the campus Open Space Plan.

**PEDESTRIAN & CYCLIST SAFETY**

paving at pedestrian zone signals caution to vehicular traffic, increasing safety for visitors

**PARKING HIDDEN FROM VIEW**

Rear apron and exercise patio concealed from view from UC San Diego campus due to grade change, providing privacy for firefighters utilizing the back yard area. Firefighter parking is concealed from public view.

**SAFE & SEPARATE CIRCULATION**

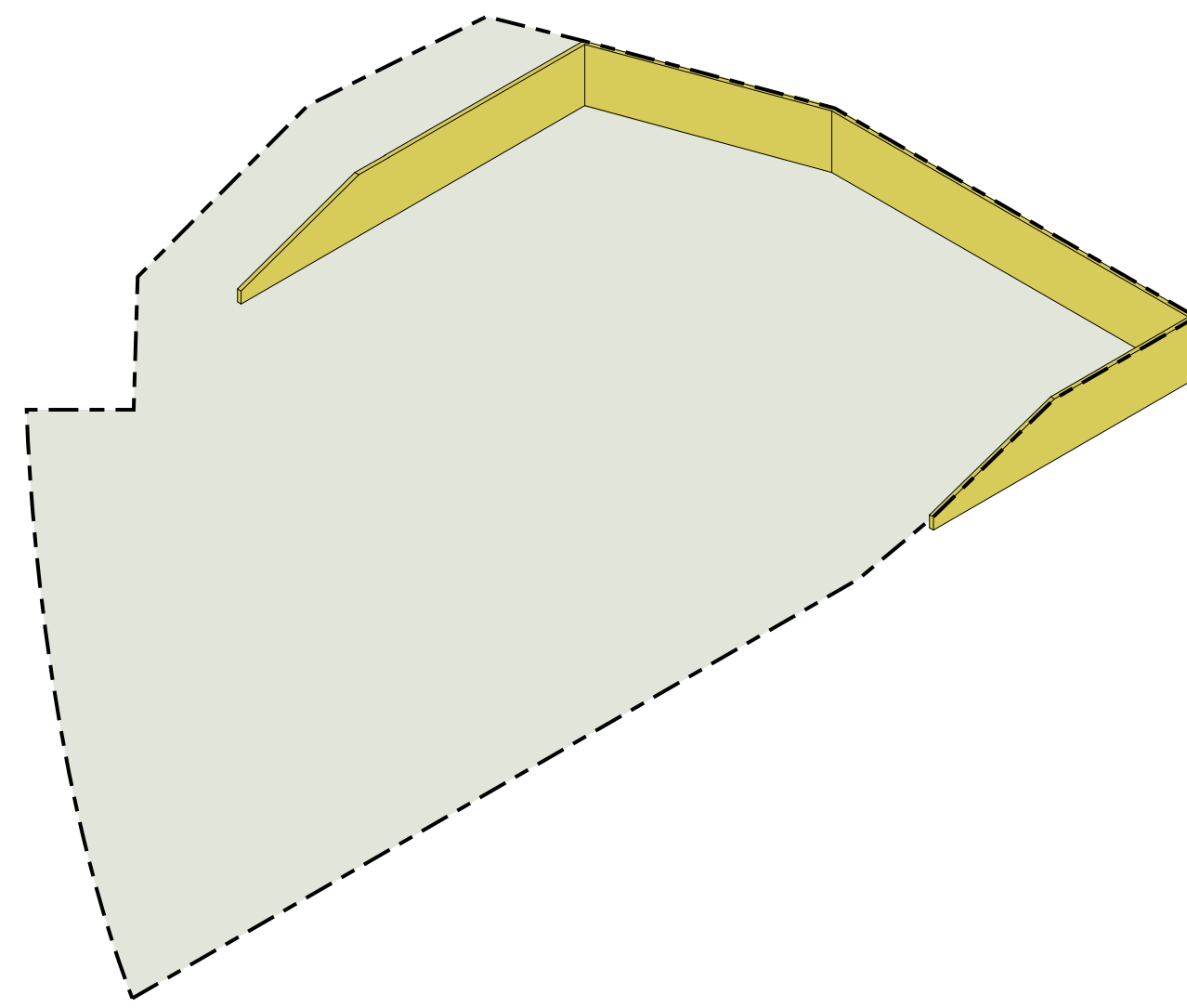
Visitor vehicular traffic and firefighter personal vehicles are separated from egress apron to avoid conflicts with exiting trucks

UC SAN DIEGO  
NORTH VIEW TENNIS COURTS

UC SAN DIEGO  
CAMPUS

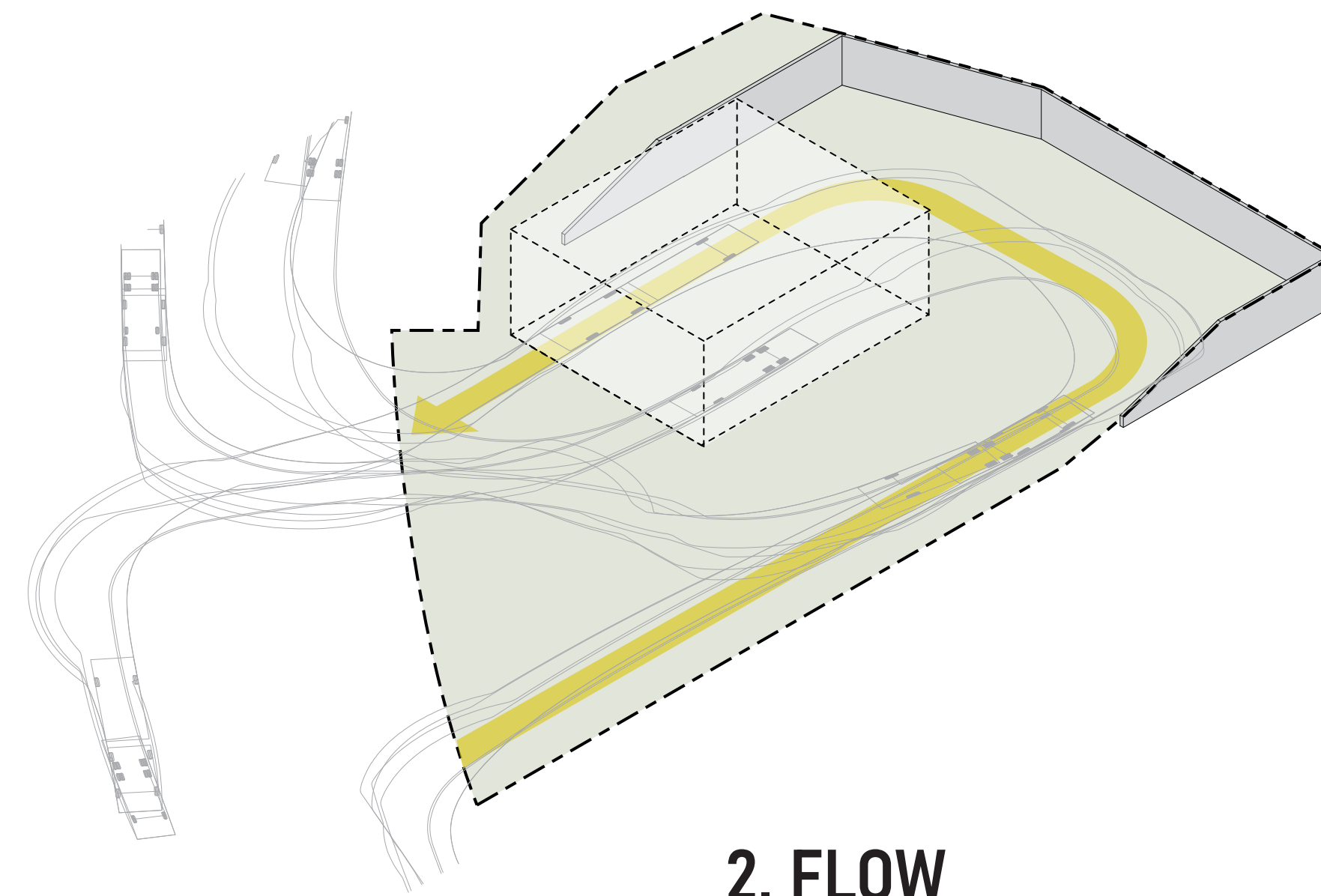
UC SAN DIEGO  
SPANOS ATHLETIC  
TRAINING FACILITY

# SIMPLE BUILDING FORM



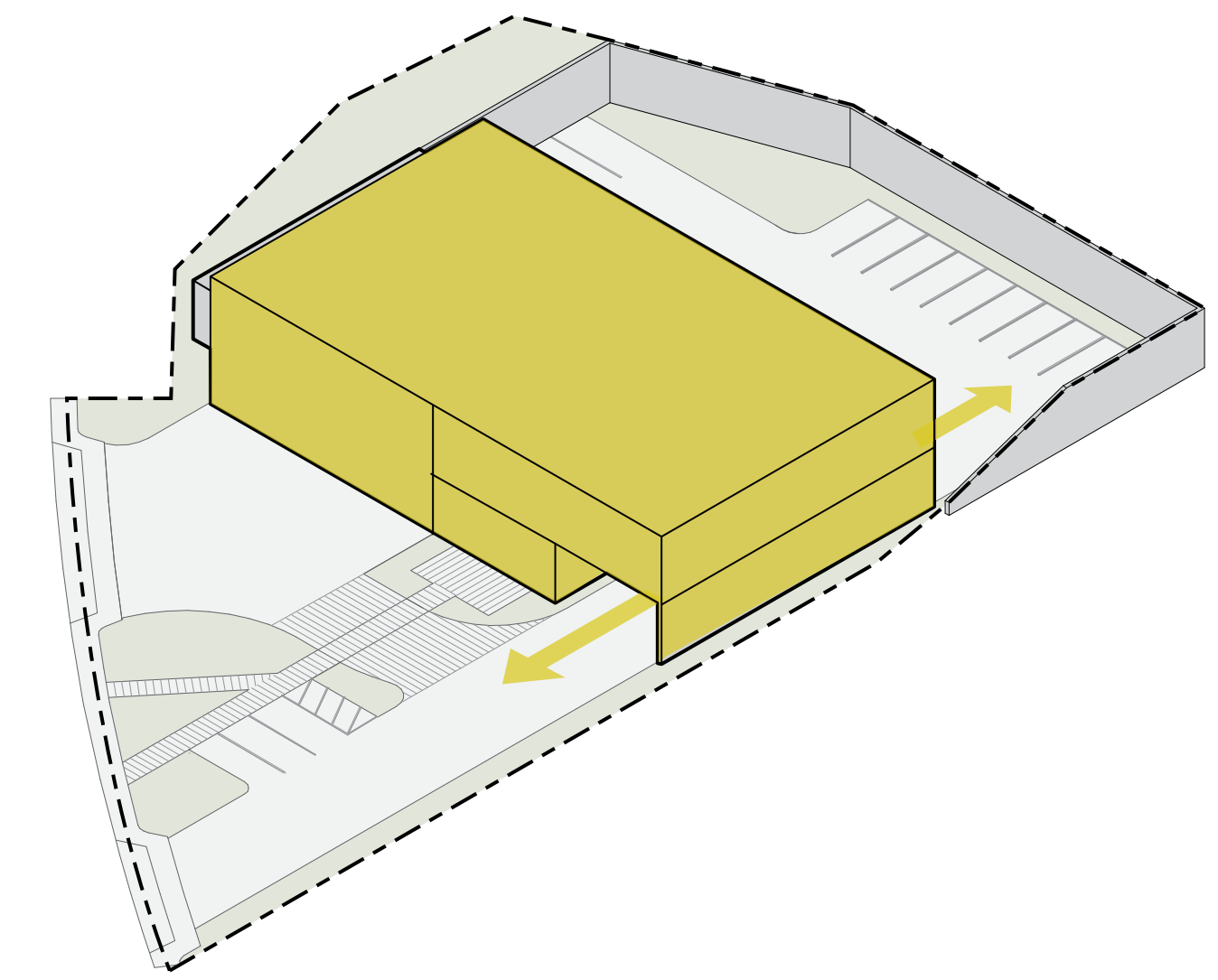
## 1. CARVE

In order to effectively function as a fire station, the sloping site must be carved out to form a flat area for the building and for vehicular circulation.



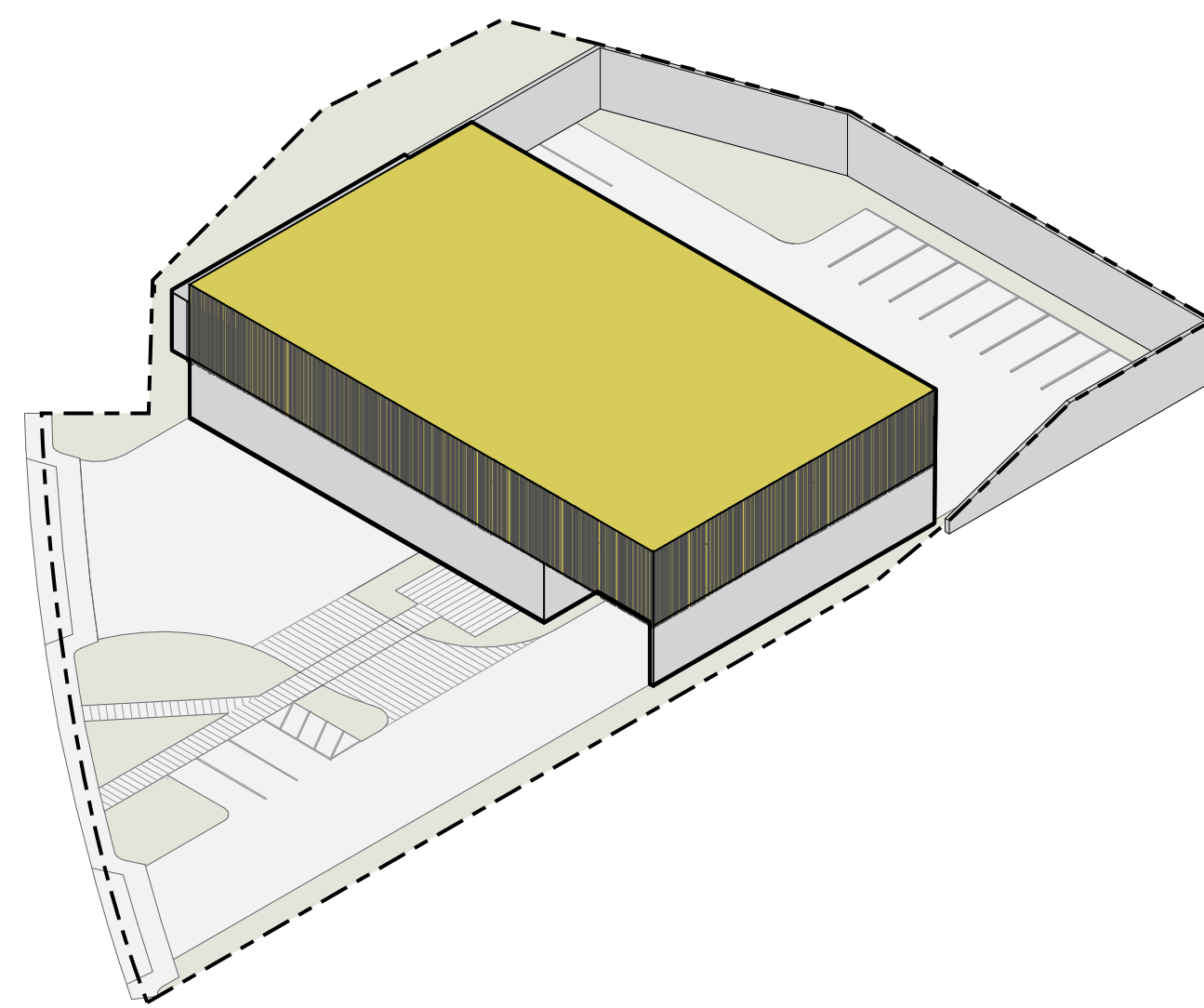
## 2. FLOW

The extremely small footprint of the site needs to accommodate the smooth ingress and egress of the large fire trucks. When the intersection with N. Torrey Pines Road and the turning radii of these large trucks are considered, there is only one fully functional location for the drive-through apparatus bay on the site.



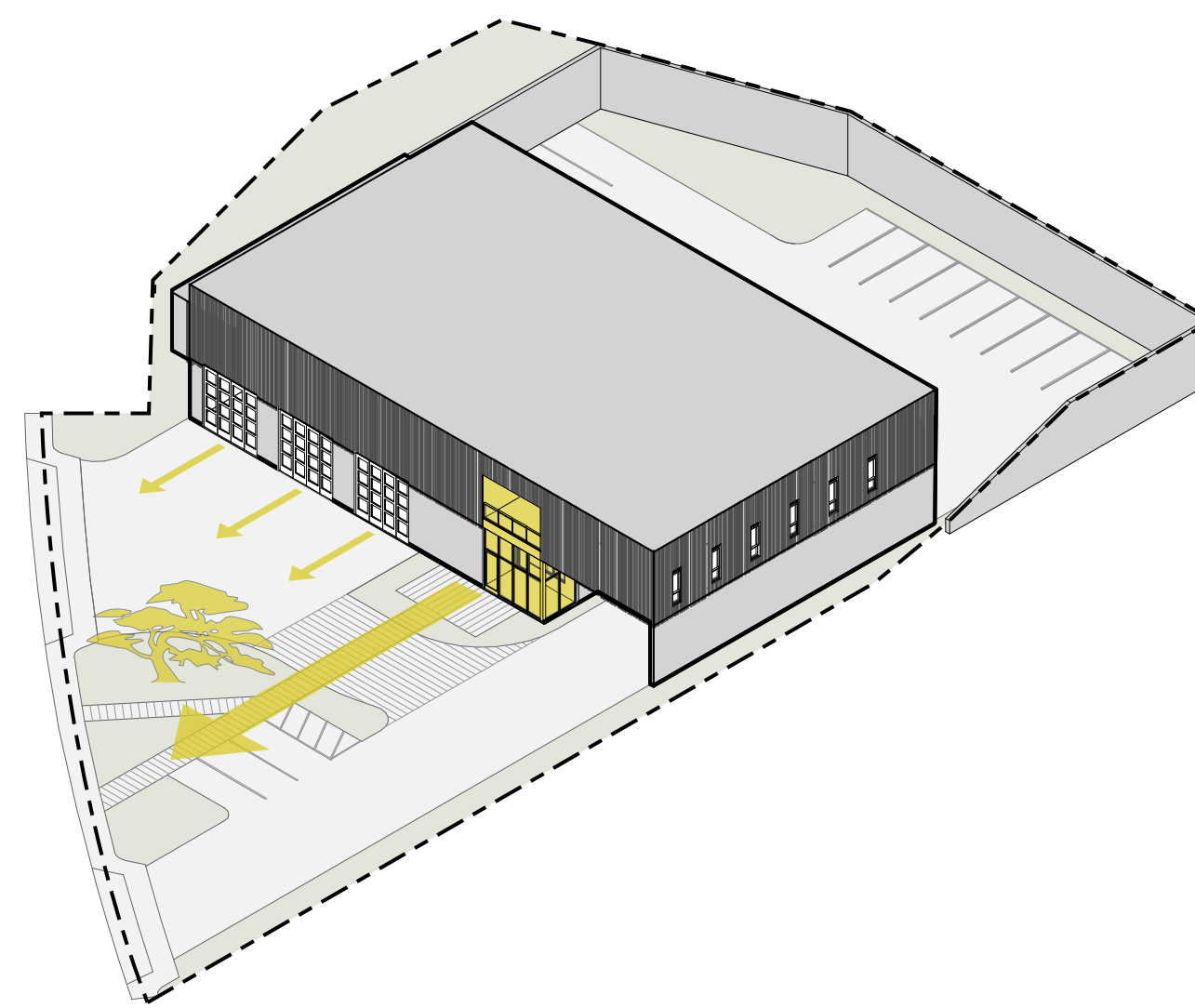
## 3. SIMPLIFY

The massing of the fire station program components forms a simple box with the second floor living quarters spanning over the drive-through bay below. This simple form results in efficient cost-effective construction.



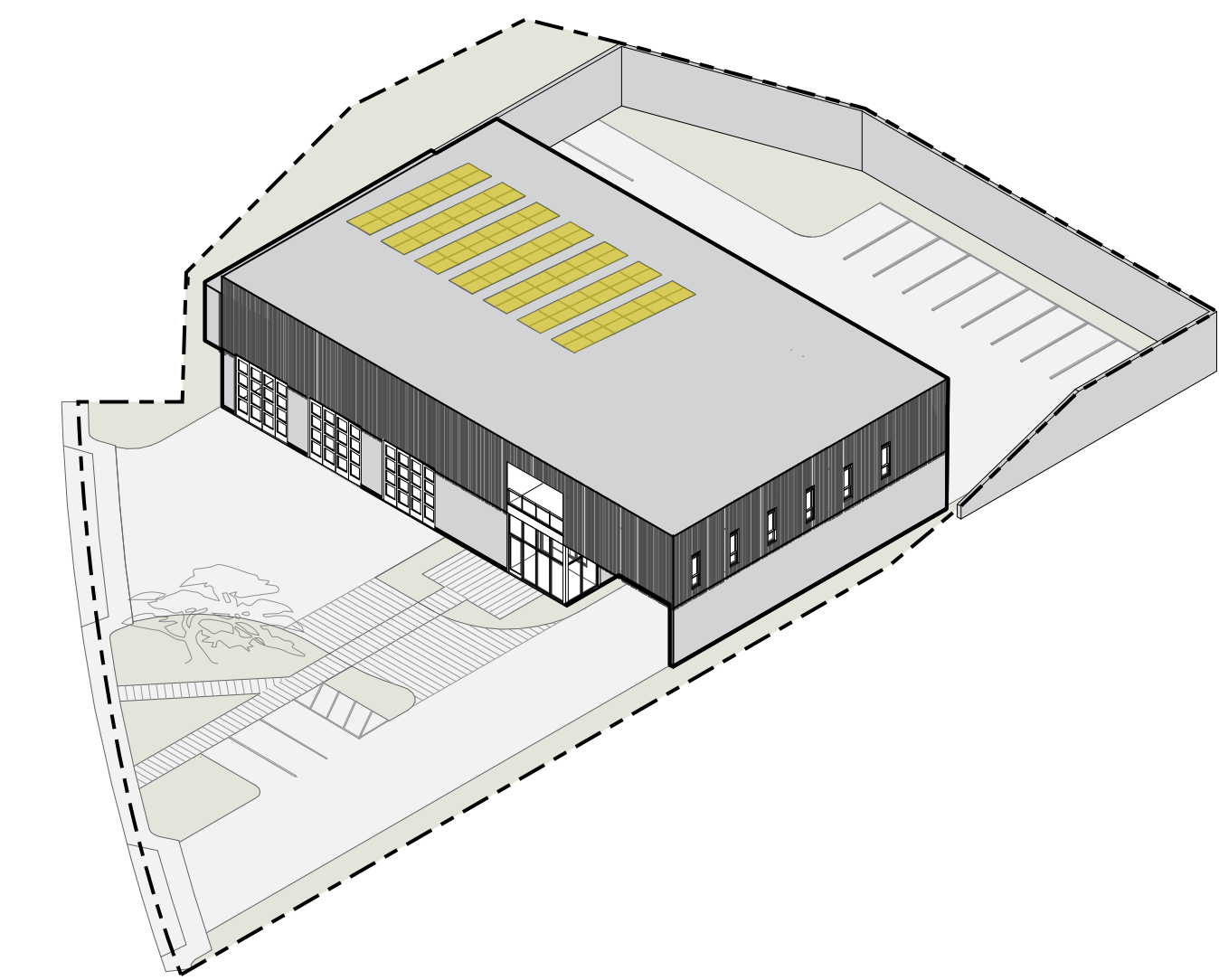
## 4. UNIFY

Defined by a metal screen 'wrapper', the upper portion of the station unites the various program elements and unifies the entire building into a calm, yet powerful, singular expression.



## 5. CONNECT

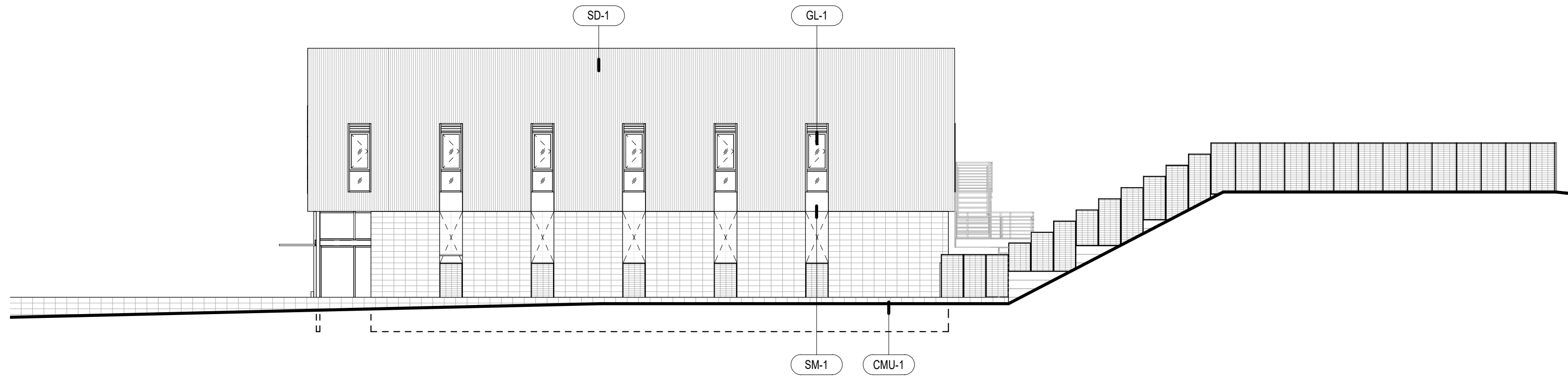
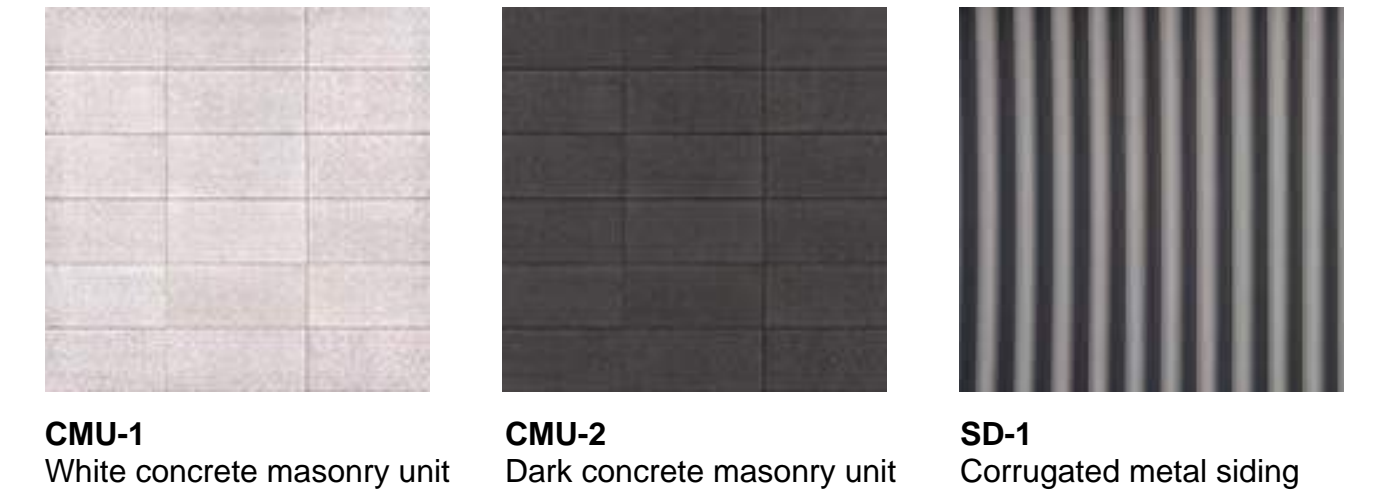
The highly transparent public entry signals an illuminated connection with the station and the community. Concentrating the landscaping and ground plane improvements in the 'tongue' that connects the public entry to N. Torrey Pines Road provides a vegetated front entry with a signature Torrey Pine tree and ensures a safe segregation of public and response functions on site.



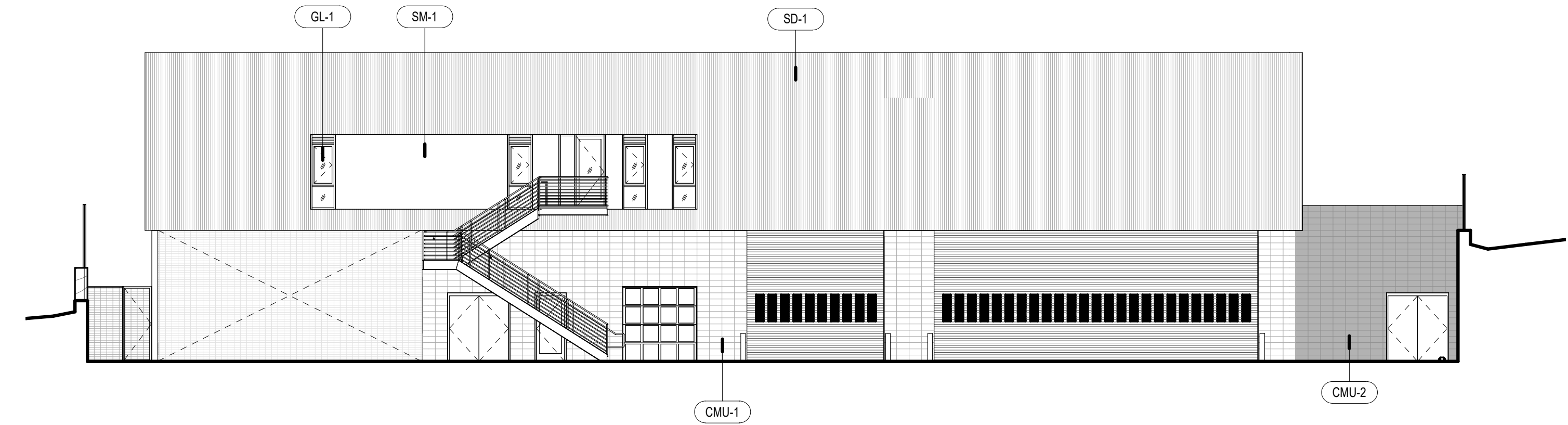
## 6. SUSTAIN

The integration of various sustainable strategies, including PV panels on the roof which are capable of achieving a portion of the building's energy use, minimizes long-term O&M costs, contributes to a more sustainable built environment and visibly demonstrates the City's commitment to sustainability and ensures that project will operate sustainably for many years to come.

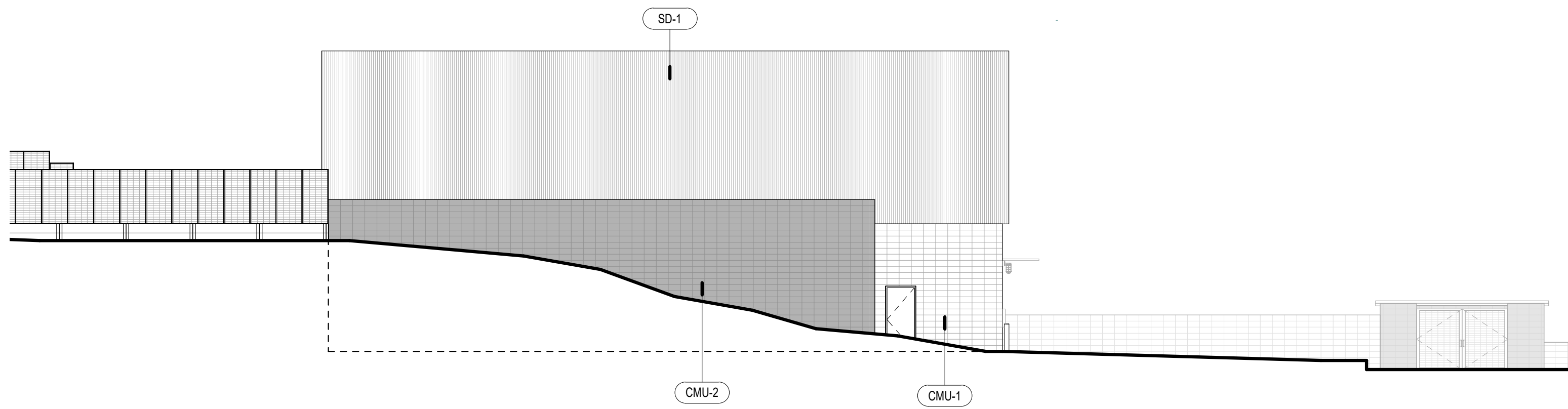
# EXTERIOR ELEVATIONS



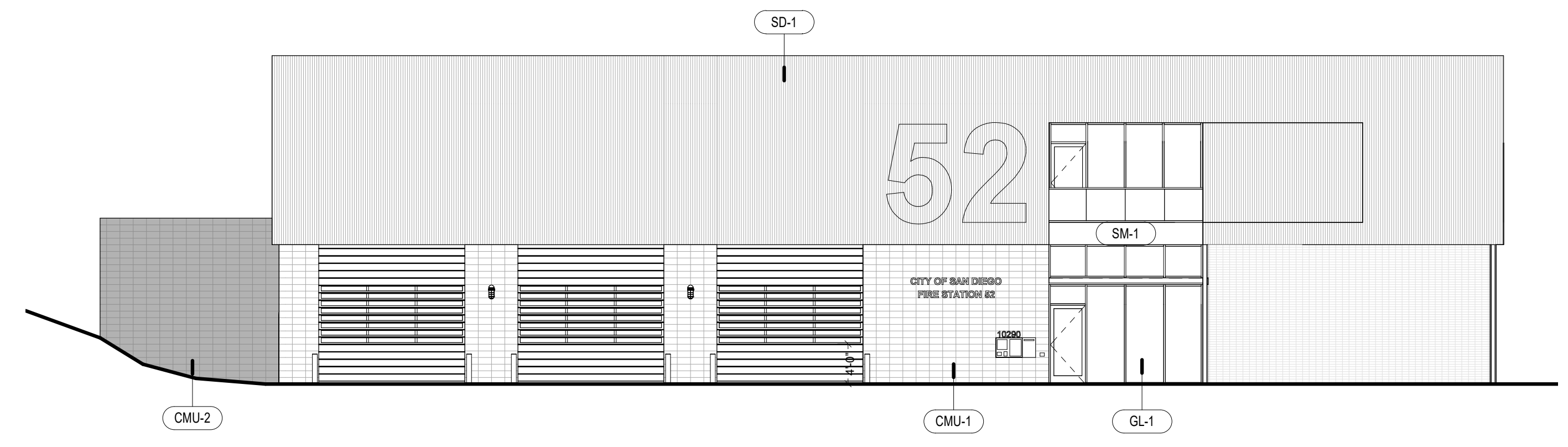
**4 SOUTH ELEVATION**  
 XX020 3/32" = 1'-0"



**2 EAST ELEVATION**  
 XX020 3/32" = 1'-0"

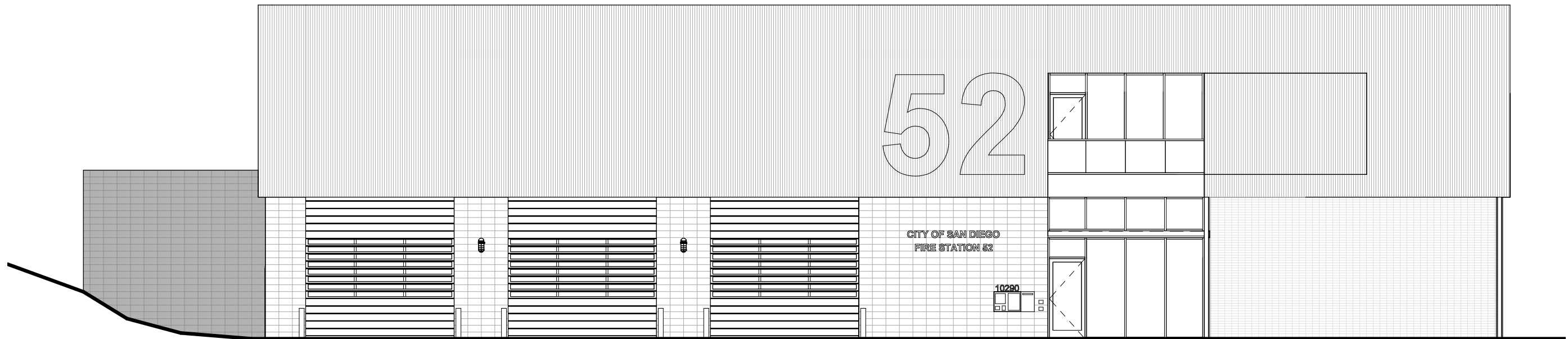


**3 NORTH ELEVATION**  
 XX020 3/32" = 1'-0"



**1 WEST ELEVATION**  
 XX020 3/32" = 1'-0"

# WEST ELEVATION



# LANDSCAPE

## TREES



*Pinus torreyana* / Torrey Pine



Oak Sp.



*Cercis occidentalis* / Western Redbud

## SHRUBS



*Agave weberi* / Weber Agave



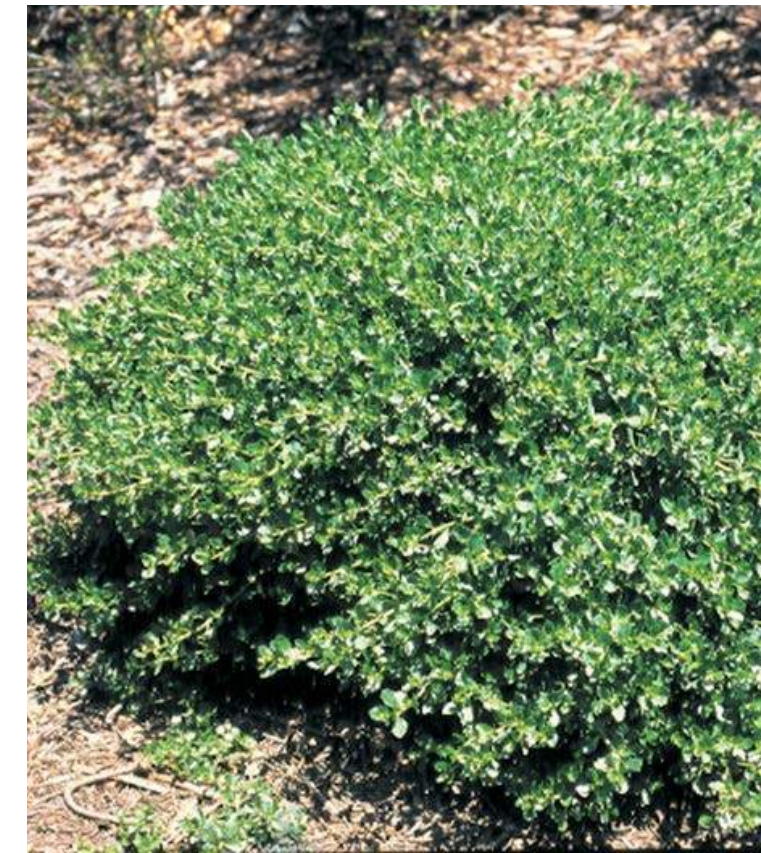
*Heteromeles arbutifolia* / Toyon



*Salvia 'Bee's Bliss'* / Bee's Bliss Sage



*Calliandra californica* / Baja Fairy Duster



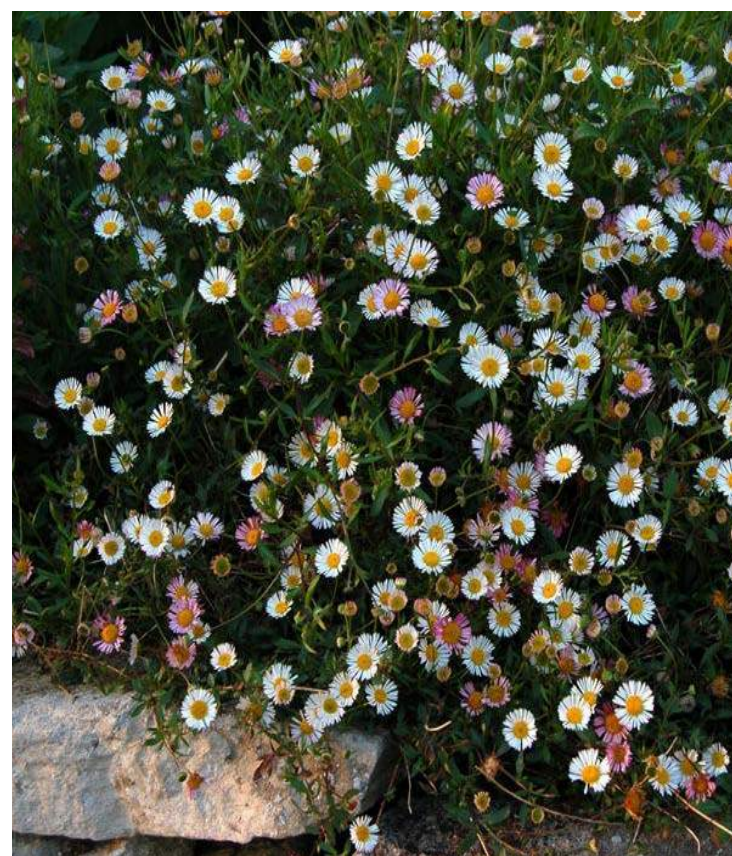
*Baccharis pilularis 'Pigeon Point'* / Coyote Bush



*Galvesia speciosa 'Firecracker'* / Island Snapdragon



*Leymus condensatus 'Canyon Prince'* / Canyon Prince Wild Rye



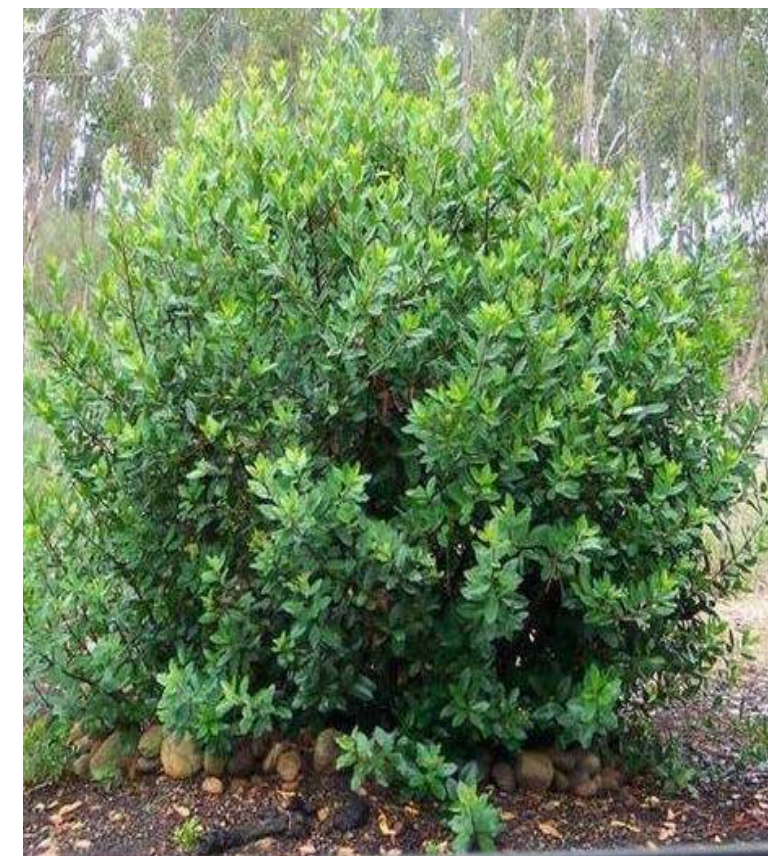
*Erigeron glaucus* / Seaside Daisy



*Erigonum fasciculatum 'Warriner Lytle'* / California Buckwheat



*Muhlenbergia rigens* / Deergrass



*Rhus integrifolia* / Lemonade Berry



*Viguiera lacinata* / San Diego County Viguiera



*Zauschneria californica* / California Fuschia



*Hesperoyucca whipplei* / Chaparral Yucca

# QUESTIONS

---