

The FINE ARTS
SOCIETY OF FINE
LIVING: UNIVERSITY
HILLS

Ray Hommes, builder of University Hills, is nationally noted for building quality homes. George MacLean, famous designer, has dramatically incorporated in these dwellings the self-same "custom feeling" inherent in the homes he has so successfully designed for internationally famous motion picture stars and executives.

The firm of Ray Hommes Company has achieved wide recognition as winner of the coveted Practical Builders Bronze Medal Award, the "Oscar" of the building industry, and through winning top awards from the National Association of Home Builders for Design and Planning.

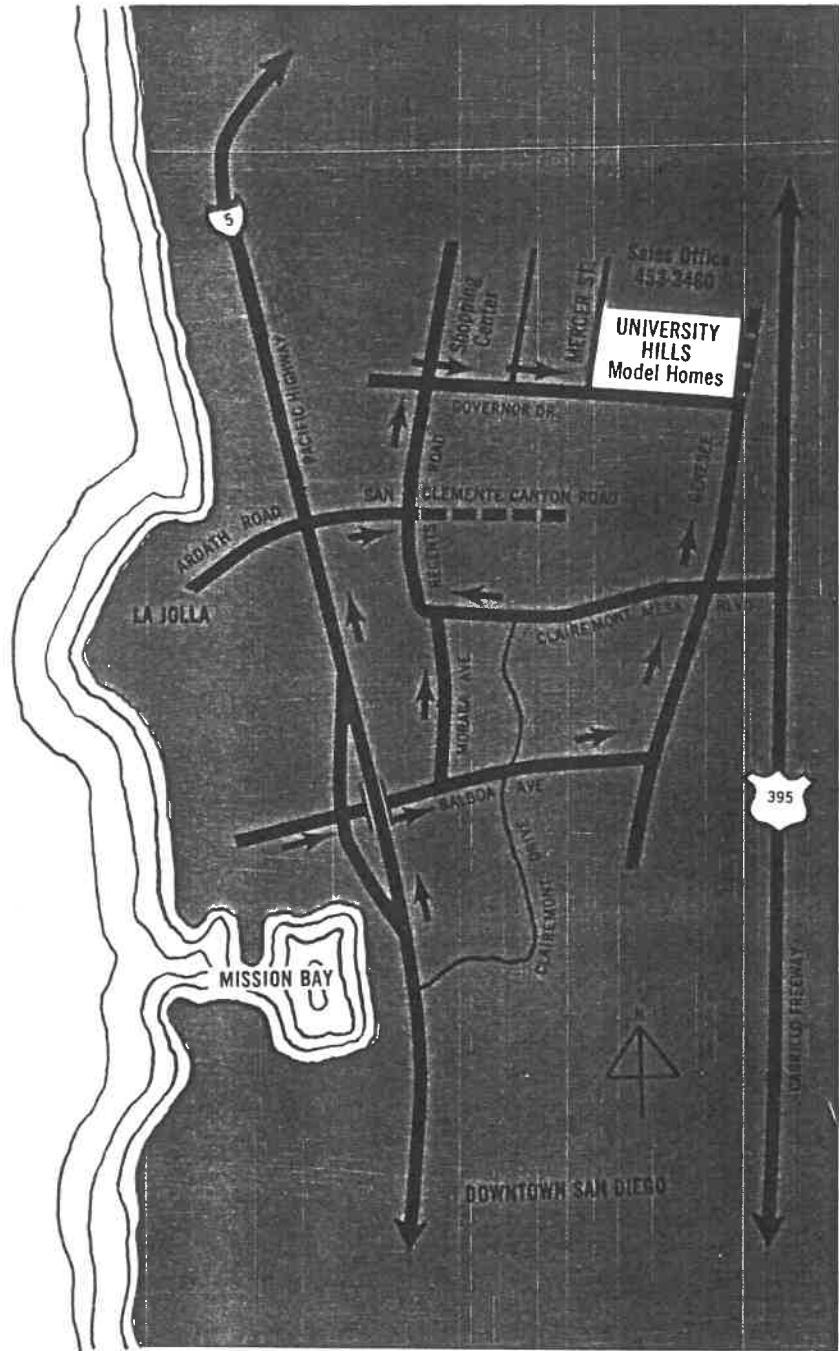
For many years, this outstanding company has planned and developed new multi-million dollar communities of quality homes for Southland families . . . now numbering more than 10,000 homes.

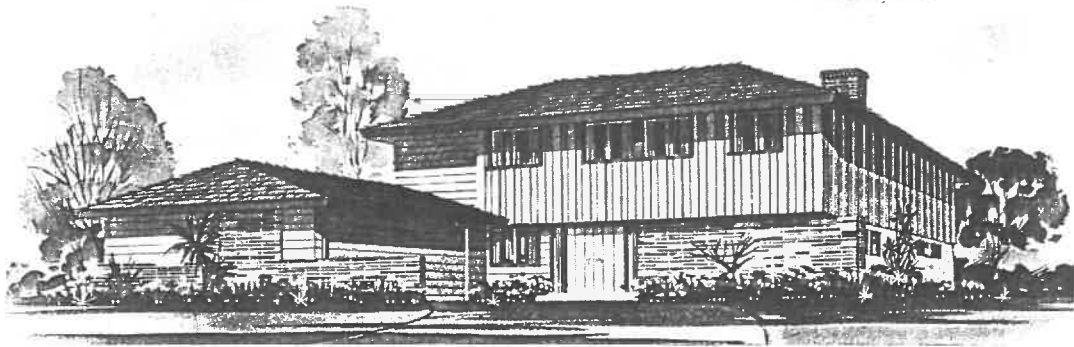
When you buy a home by Ray Hommes, you gain the assurance of owning a home of enduring beauty and timeless design . . . solidly constructed of top-grade materials by master craftsmen . . . with sound investment value and high re-sale potential.

The University City Master Plan assures increasing values. This internationally recognized masterpiece of civic planning bids to be the most exciting and significant development in San Diego history . . . complete with regional and major shopping centers, schools, churches and easy access to recreational facilities. The factors that favor rapid growth of University City toward destined greatness are many, indeed . . . not the least of which is the fact that this is the first recent plan to present the complete concept of a major university campus and its surrounding and supporting community, exemplified heretofore in the Westwood area of Los Angeles. The early establishment of your home in University City will stand as a logical and wise decision as the Master Plan takes substance.

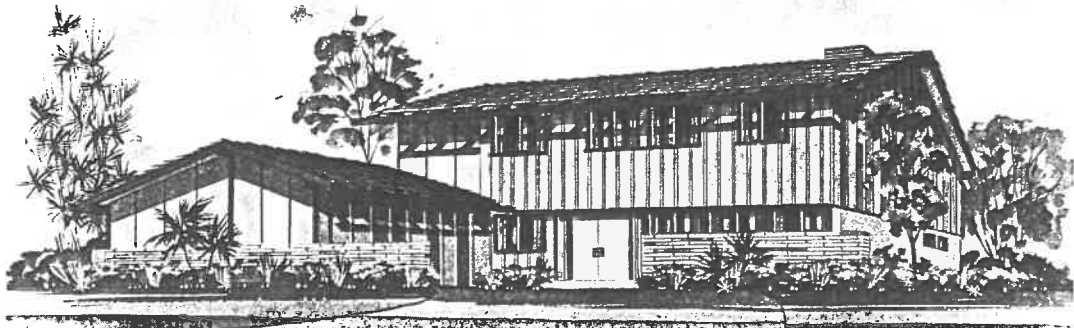


*Titles insured by
Union Title Insurance Co.*





ELEVATION T1



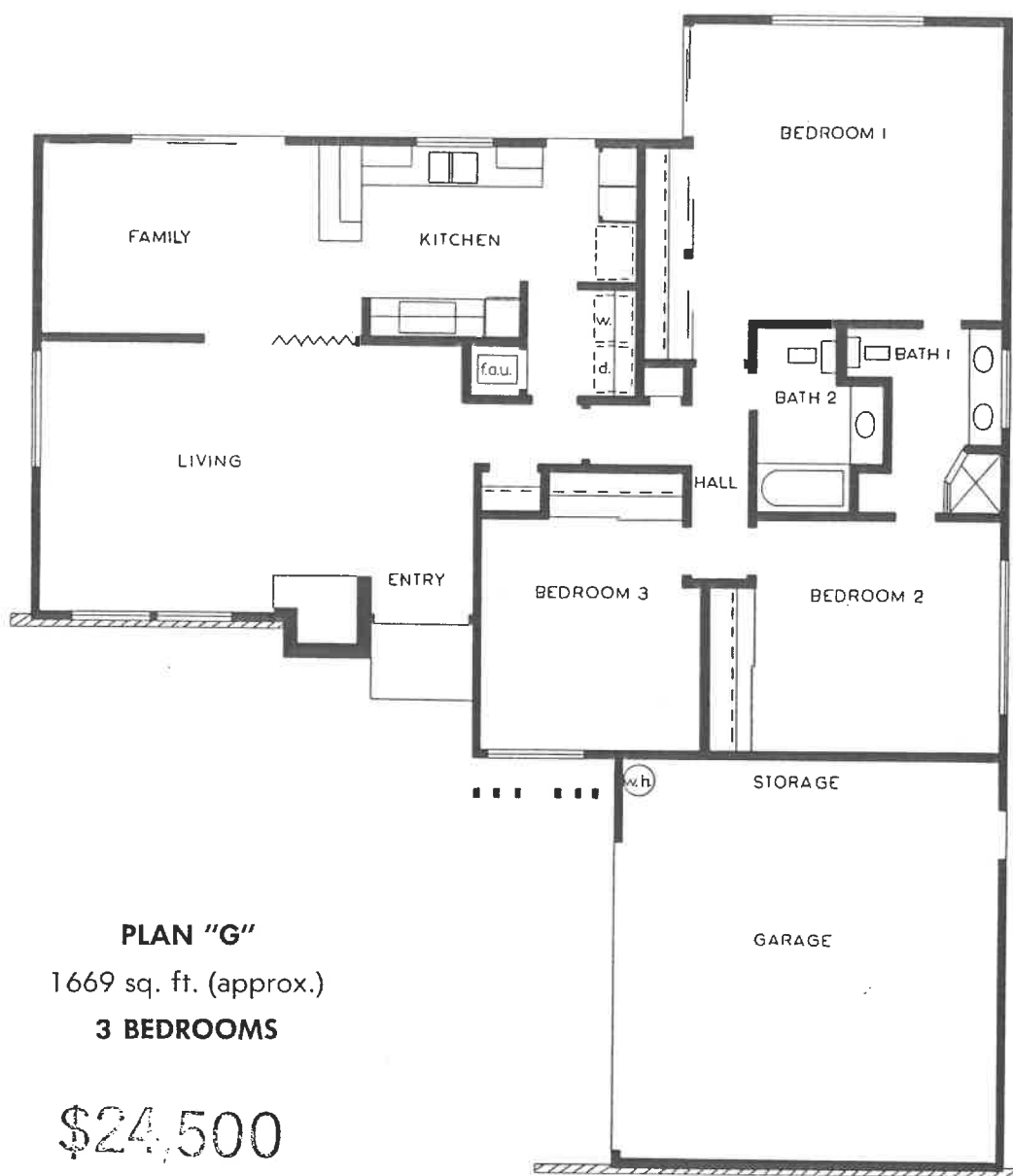
ELEVATION T2



ELEVATION T3



ELEVATION T4



PLAN "G"

1669 sq. ft. (approx.)

3 BEDROOMS

\$24,500

Gaffers & Sattler built-in range, oven and dishwasher

Waste King garbage disposer

Ash kitchen cabinets with special new carved design doors

Superamic tile kitchen counter tops

Moen faucets and valves in kitchen, shower, tub and bath #2

Cultured marble pullman tops in all baths

Mirrored wall above Pullman in all baths

Decorated double lavatories and toilet seats with polished Artistic Brass faucets and fittings in master bath

Ceramic tile shower floors

Ceramic tile walls 6' high in showers, 5' high over tubs

Solid vinyl tile floors in all baths

Luminous ceilings with fluorescent fixtures in all baths

Carved Burlike folding wardrobe doors

Carved Burlike double doors at entry

Luminous hallway lighting

Holly forced air heating with thermostat

Payne 40 gallon water heater with 5 yr. warranty

One 6' and one 8' sliding patio doors

Aluminum sliding windows

Concrete driveway

Masonry veneer

Guaranteed 5 yr. termite protection

Formica bar tops

8' x 8' Ash folding doors between living room and family room

Wallpaper in living room

Quiet light switches

Masonry fireplace

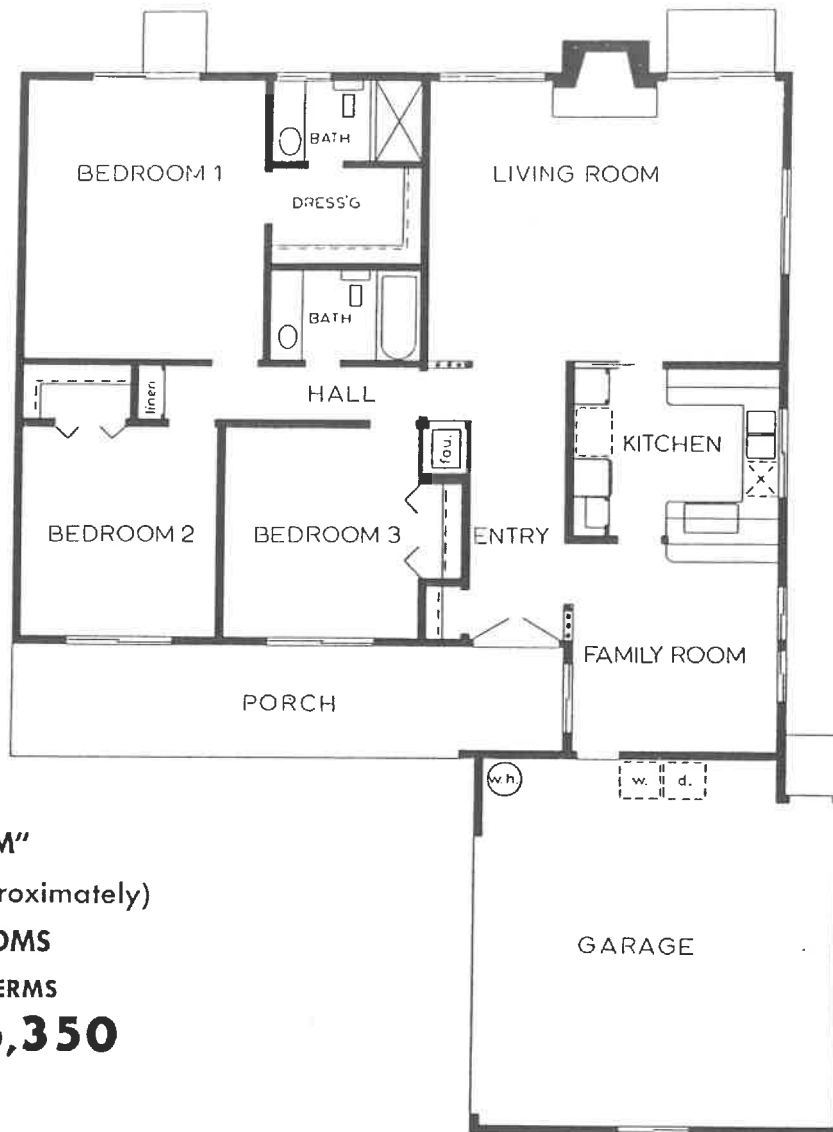
Insulated ceiling

Cedar Shake roof

Fenced rear yards

Color coordination and models furnished by Harry LaChance • UNIVERSITY KILLS. A Development of Ray Hommes Company.

SEE OTHER SIDE FOR EXTERIORS



PLAN "M"

1534 sq. ft. (approximately)

3 BEDROOMS

FHA - GI TERMS

FROM, **\$26,350**

Waste King: ELECTRIC double built-in range, oven, dishwasher and garbage disposal

Natural ash kitchen cabinets

Spanish decorator tile kitchen counter tops

Cultured marble pullman tops in baths

Mirrored wall above pullman

Ceramic tile walls in shower, and over tubs

Luminous ceilings with fluorescent fixtures in baths

Make-up lighting in Master Bath

Fluorescent kitchen fixture

Vinyl asbestos tile floors in baths

Like folding wardrobe doors

Solid core double doors at entry

Luminous hallway lighting

Holly forced air heating with thermostat

Day & Nite 40 gallon water heater with 10 yr. warranty

6' and 8' aluminum sliding patio doors

Aluminum sliding windows

Concrete driveway

Cedar shake roof

Vinyl asbestos floor tile in entry

Mediterranean finish stucco exterior

Formica bar tops

Quiet light switches

Masonry fireplace; log lighter

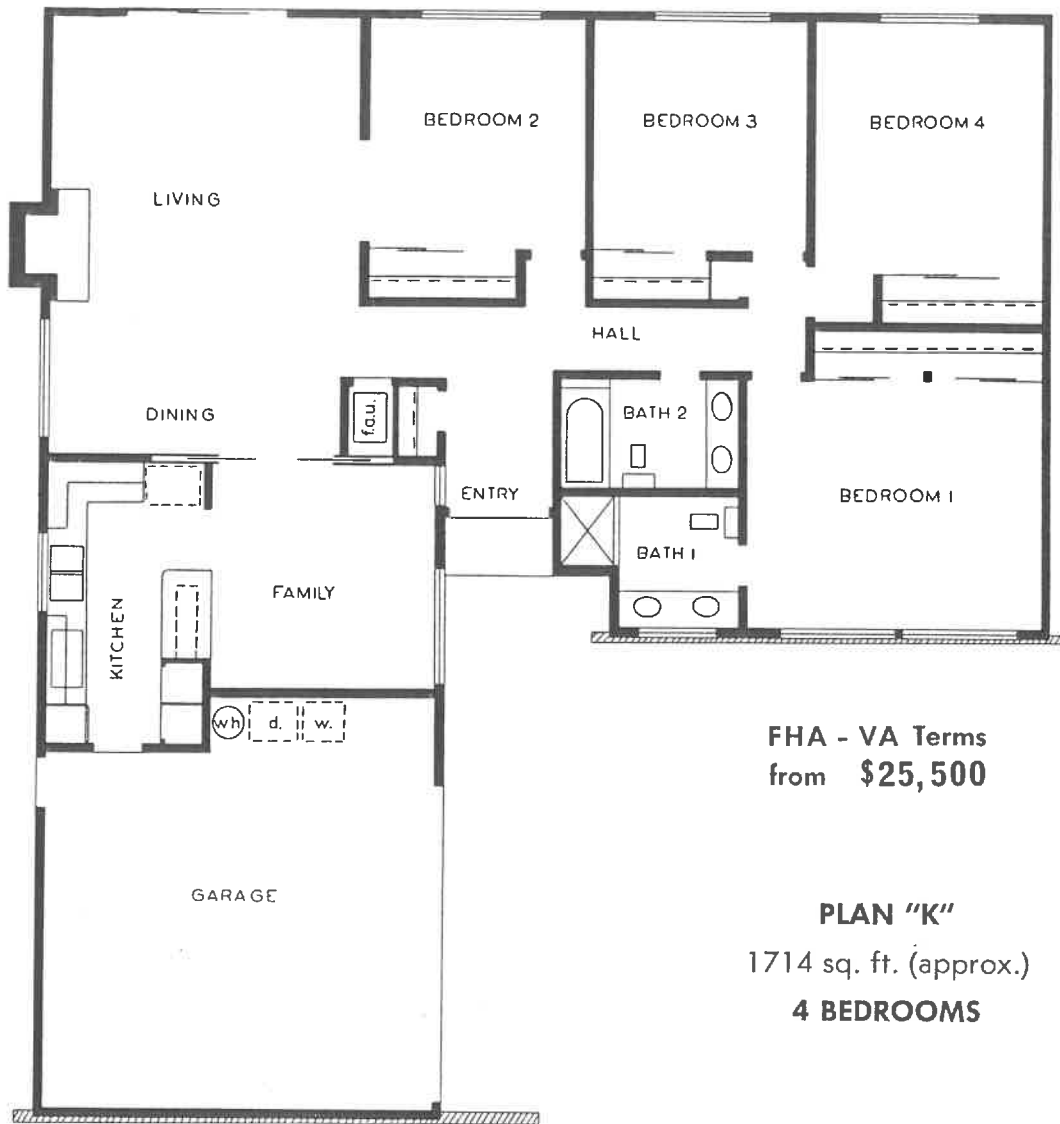
Insulated ceiling

Front yards seeded

Fenced rear yards

All color coordination and model home furnishings by Harry LaChance of Beverly Hills

A RAY HOMMES DEVELOPMENT • **UNIVERSITY HILLS** • ONE OF AMERICA'S GREAT BUILDERS



**FHA - VA Terms
from \$25,500**

PLAN "K"
1714 sq. ft. (approx.)
4 BEDROOMS

Gaffers & Sattler built-in range, oven and dishwasher

Waste King garbage disposer

Ash kitchen cabinets with special new carved design doors

Superamic tile kitchen counter tops

Moen faucets and valves in kitchen, shower, tub and bath #2

Cultured marble pullman tops in all baths

Mirrored wall above Pullman in all baths

Decorated double lavatories and toilet seats with polished Artistic Brass faucets and fittings in master bath

Ceramic tile shower floors

Ceramic tile walls 6' high in shower, 5' high over tubs

Solid vinyl tile floors in all baths

Luminous ceilings with fluorescent fixtures in all baths

Carved Burlike folding wardrobe doors

Carved Burlike double doors at entry

Luminous hallway lighting

Holly forced air heating with thermostat

Payne 40 gallon water heater with 5 yr. warranty

8' aluminum sliding patio doors

Aluminum sliding windows

Concrete driveway

Vinyl asbestos Travertine floor tile in entry

Masonry veneer

Guaranteed 5 yr. termite protection

Formica bar tops

Panelled Family Room

Quiet light switches

Masonry fireplace

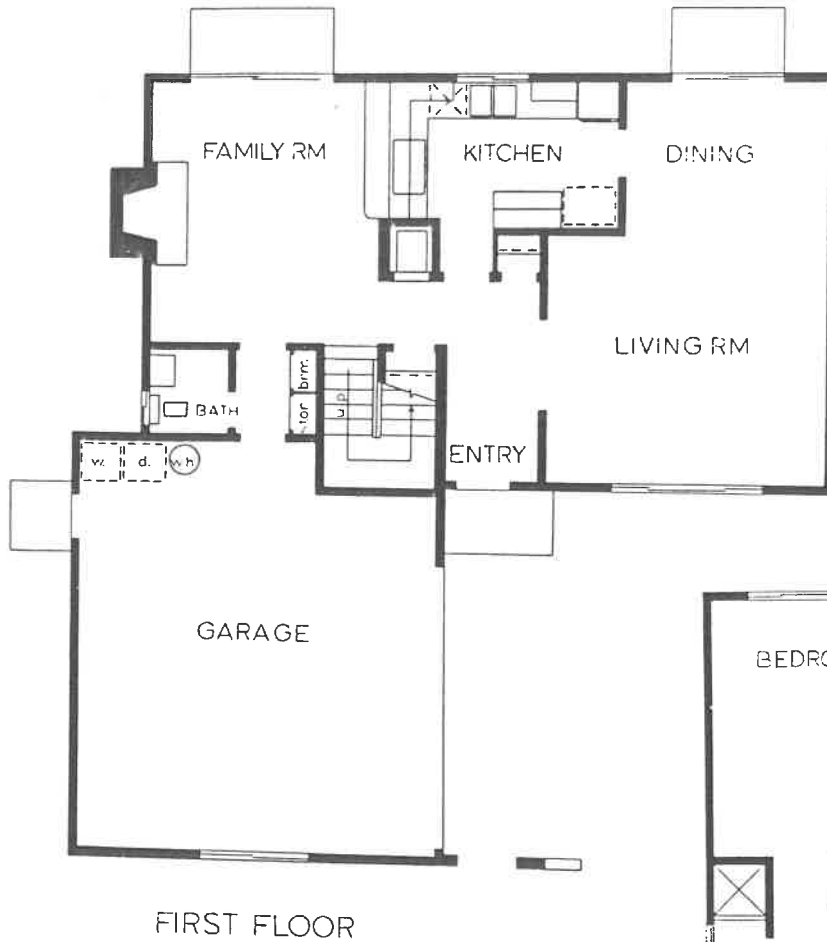
Insulated ceiling

Cedar Shake roof

Fenced rear yards

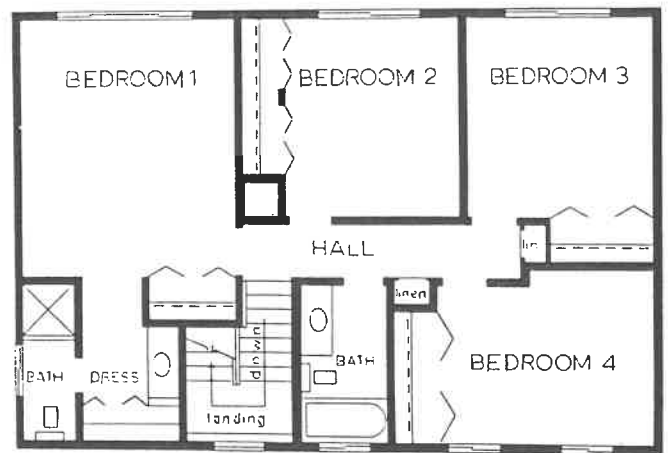
Color coordination and models furnished by Harry LaChance • UNIVERSITY HILLS. A Development of Ray Hommes Company.

SEE OTHER SIDE FOR EXTERIORS



FIRST FLOOR

GI-FHA Terms
from **\$26,250**



SECOND FLOOR

PLAN "S"

1830 sq. ft. (approximately)

4 BEDROOMS

Gaffers & Sattler electric built-in range, oven and dishwasher
Waste King garbage disposer
Natural ash kitchen cabinets
Spanish decorator tile kitchen counter tops
Cultured marble pullman tops in baths
Mirrored wall above pullman
Ceramic tile walls in shower, and over tubs
Luminous ceilings with fluorescent fixtures in baths

Vinyl asbestos tile floors in baths
Like folding wardrobe doors
Double doors at entry on some models
Luminous hallway lighting
Holly forced air heating with thermostat
Pioneer 40 gallon water heater with 5 yr. warranty
6' and 8' aluminum sliding patio doors
Aluminum sliding windows
Concrete driveway

Vinyl asbestos floor tile in entry
Mediterranean finish stucco exterior
Guaranteed 5 yr. termite protection
Formica bar tops
Quiet light switches
Masonry fireplace
Insulated ceiling
Front yards seeded
Fenced rear yards

All color coordination and model home furnishings by Harry LaChance of Beverly Hills

A RAY HOMMES DEVELOPMENT • **UNIVERSITY HILLS** • ONE OF AMERICA'S GREAT BUILDERS