

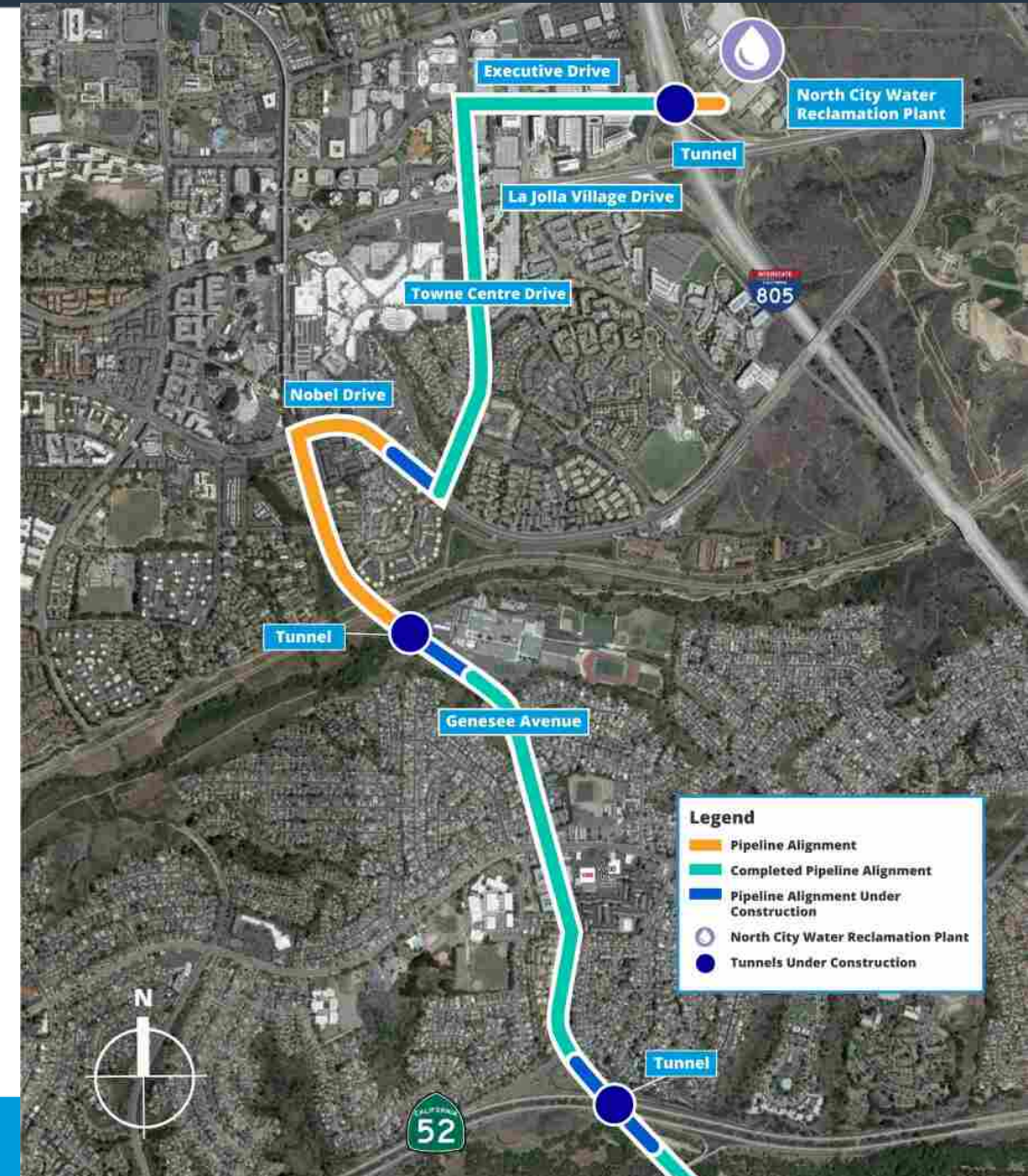
Pure Water San Diego Morena Northern Pipelines & Tunnels Project Update

University City Community Association

*Clem Wassenberg
May 8, 2024*

SD Morena Northern Pipelines & Tunnels

- Two pipelines – from Genesee and Appleton to NCWRP
 - *One transports wastewater to NCWRP (N)*
 - *One transports brine from NCPWF to PLWTP (S)*
- Three tunnels at SR-52, Rose Canyon (Genesee), and I-805
- 13,089 linear feet of pipeline installed
- 430 linear feet of tunnel
- Next major milestones:
 - *Continued work on Genesee Avenue northbound*
 - *Nobel Drive from Towne Centre Drive to Genesee Avenue*
 - *Begin tunneling shafts near UC High School on Genesee Avenue*



Full Alignment: What You Can Expect

- Work will occur during daytime with occasional night work
- *Monday-Friday, 7 a.m. to 5:30 p.m., occasional Saturday work, 9 a.m. to 5 p.m.*
- K-rail for safety of public and workers
- *Access for residents, businesses and emergency vehicles will be maintained where possible; some delays expected*
- Construction equipment and material staging will be in work zone and will move along with construction
- Possible full-time intersection closures and short-term closures for weekend work
- Posted detours for motorists, cyclists and pedestrians where needed. Trails to remain open wherever possible
- No parking in construction zones
- Impacts such as noise, dust, bright lights and construction vehicle traffic during work hours



Current Work Sites



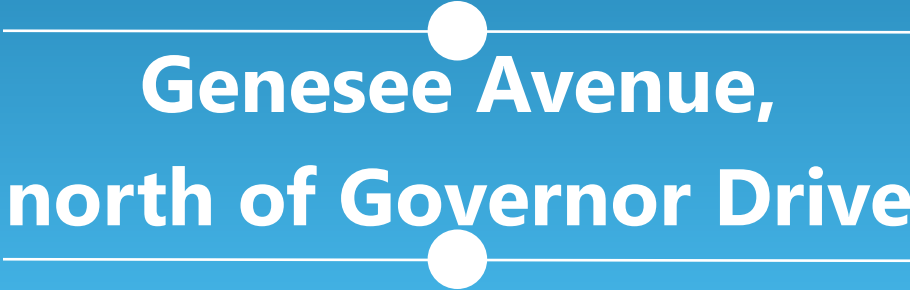
Nobel Drive



Construction Details: Westbound Nobel Drive

- Work hours: Day work
7 a.m. to 5:30 p.m.
- Work continues on westbound Nobel Drive
- Pipe will be installed from Towne Centre Drive to Via Las Rambles
- Tentative completion of current phase: Summer 2024





**Genesee Avenue,
north of Governor Drive**

SD Genesee Avenue - Governor Drive to Centurion Square

- Work hours: Day work from 7 a.m. to 5:30 p.m.
- Southbound lanes will be closed due to construction
- Single-lane traffic in the northbound lane, one lane each direction
- Tentative completion of current phase: Fall 2024



Genesee Avenue - Governor Drive to Centurion Square

- Coordinating access with UC High School to mitigate traffic around Centurion Square
- Coordinating access with Elan Terraza Apartments





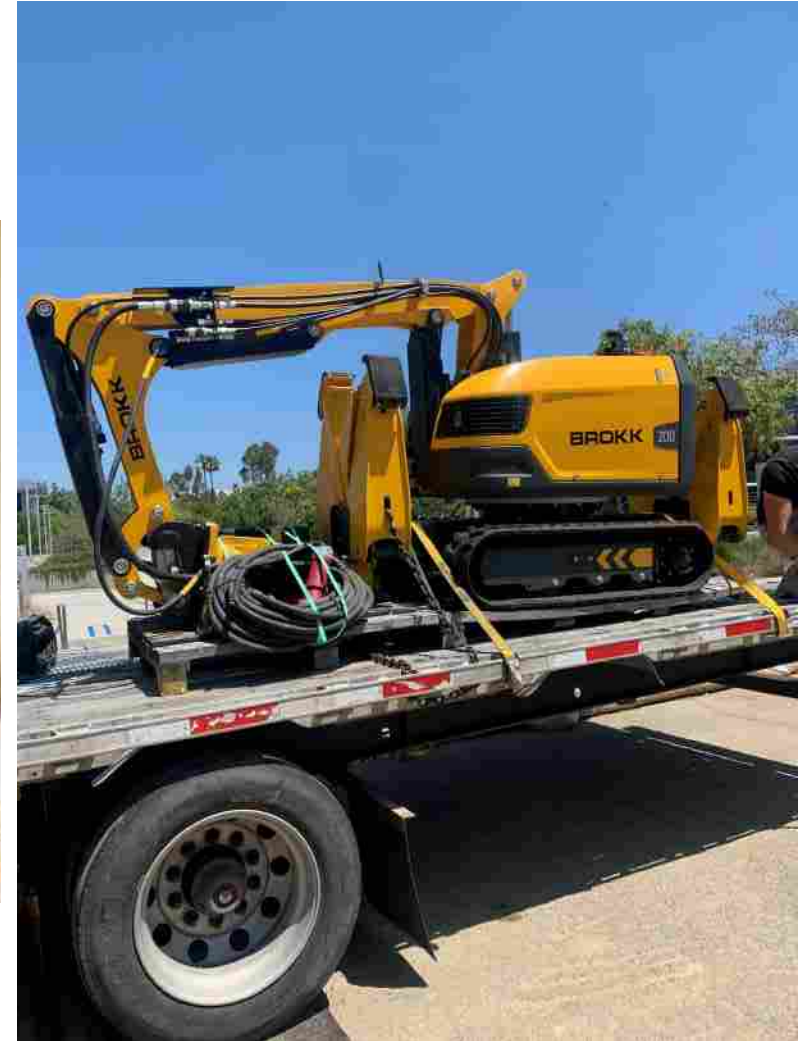
Tunneling Work

San Clemente Tunnel at Marian Bear Park

- Pipeline installation continues through the shafts in the center of Genesee Avenue and the parking lot of Marian Bear Park
- Marian Bear Park and Trails are open for use
- Temporary closure of Marian Bear Park parking lot for public safety
 - *Alternate parking can be located at 5233 Regents Road*



- I-805 tunneling machine modification ongoing to address rock formations
- Tunnel is 196 feet long





Notifications

- **Construction notices with maps**
- **Stakeholder meetings**
- **Webpage content**
- **Postcard Mailer**
- **Community news article content**
- **E-blast content**
- **Social media**
- **Fact sheets and pocket cards**
- **Waze & Google Maps**



Website:
purewatersd.org



Phone Line:
833-882-7973
833-UTC-PWSD



Social Media:
[@purewatersd](https://www.instagram.com/purewatersd)



Media Relations



E-blasts & Mailers



Meetings

**Sign up for E-
blasts (List #6):**



**Phone Line:
833-882-7973
833-UTC-PWSD**

Community Liaison: Mariah Hugo Almasco, mhugo@san Diego.gov



Questions?