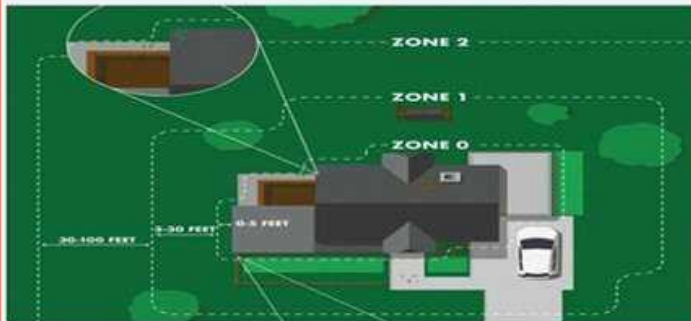


Everything you need to know about implementing
Zone 0 but were afraid to ask.



Fire Safe Your Place

Join us to learn more about *Creating Zone Zero Defensible Space* to make a fire break around your place; *Hardening Your Home* to make your home less likely to burn; *Pre-Planning for Evacuation* to know how to get out of your home and out of your neighborhood.

Monday, April 13, 6 pm via Zoom

bit.ly/ZoomFireSafeCouncilUniversityCity



<https://www.universitycitynews.org/fire-safe-council-university-city/>

Fire Safe Your Place - Topics

- Fire History
- Defensible Space
- Zone Zero Implementation
- Brush Density Audit Rose Canyon Rim
- Fire Hazard Severity Zones
- Fuel Reduction
- Home Hardening
- Emergency Supplies
- Escape and Evacuation Routes
- Genasys Protect
- Insurance Coverage
- New Legislation
- Brush Management in Canyons
- Fire Safe Resources
- Fire Safe Vendor List



University City Fire Safe Council - The role of a Fire Safe Council is to provide education and outreach to prevent and prepare for fire so that all are well-protected from the threats of structure and wildfire. Our focus areas are fire safety education, emergency preparedness, and risk reduction.

Our fire agency is the City of San Diego Fire-Rescue Department.

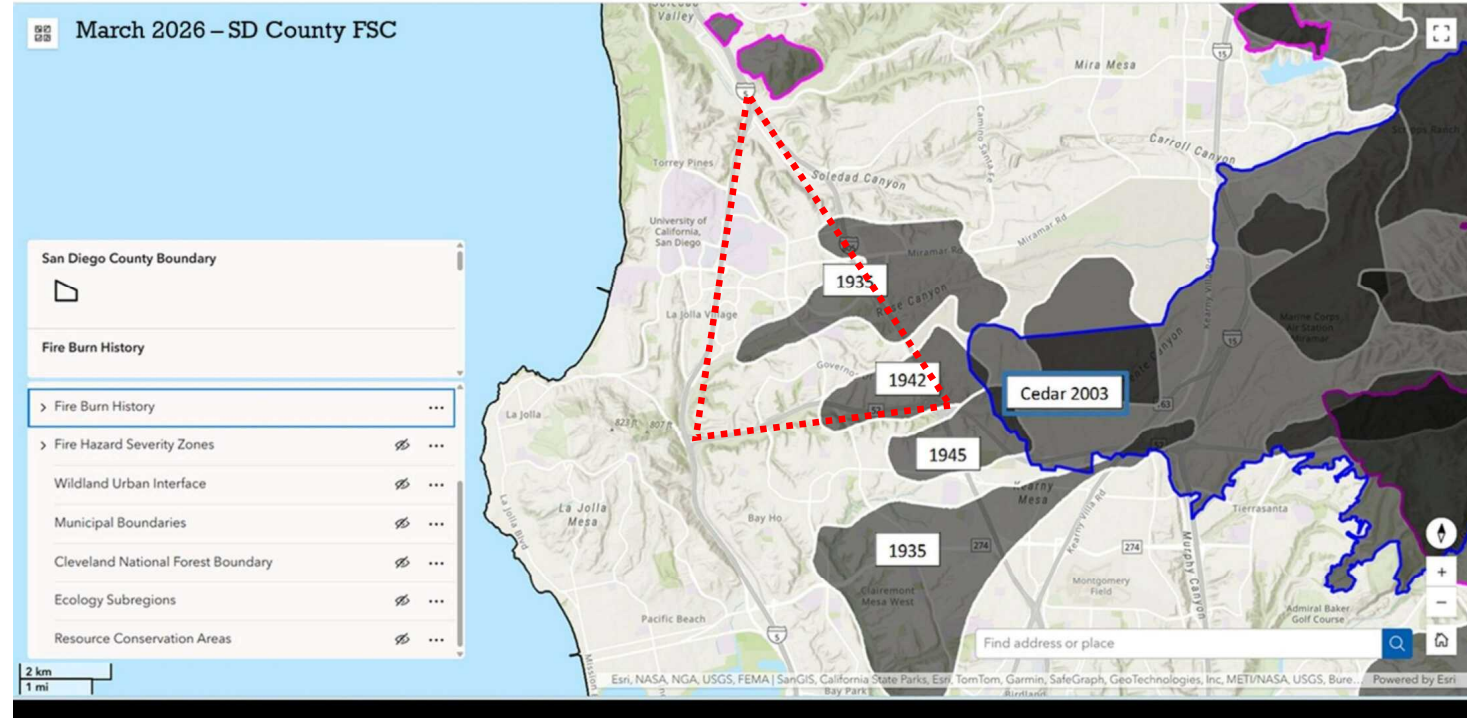
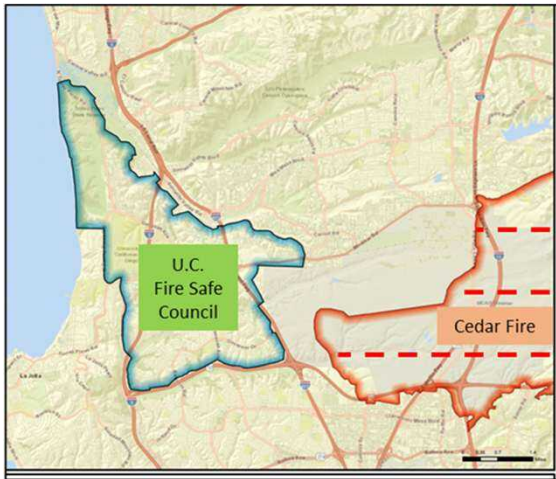
- We are University City volunteers who came together in September 2019 as part of a network of volunteer community Fire Safe Councils in San Diego County and throughout the state of California.
- We are supported by the Fire Safe Council of San Diego County and the San Diego Regional Fire Foundation.

- UC Fire Safe Council – <https://www.universitycitynews.org/fire-safe-council-university-city/>
- Fire Safe Council of San Diego County - <https://firesafesdcounty.org/>
- San Diego Regional Fire Foundation – <https://sdfirefoundation.org/>
- San Diego Fire Rescue Department – <https://www.sandiego.gov/fire>
- Contact Us – UCFireSafeCouncil@gmail.com
- Fire Safe Business Directory - <https://cafiresafecouncil.org/fire-safe-business-directory/>



University City area and San Diego Burn History 1935 to present

- 2020 – Valley Fire - 16,000 acres**
- 2016 – Border Fire – 7,600 acres**
- 2007 – Harris Fire – 90,000 acres**
- 2007 – Witch Fire – 197,000 acres**
- 2003 – Cedar Fire – 280,000 acres**



Zone Zero and the Brush Management Zones

California Assembly Bill 3074 (AB 3074)

<https://www.sandiego.gov/fire/community-risk-reduction/defensible-space-property-owners>

- Zone 0 is the area within 5 feet of a home or building, including outbuildings, attached decks, and stairs.
- Keeping this area clear of vegetation and other flammable materials helps prevent wildfire from reaching the structure, especially from wind-driven embers.
- Zone 0 is required for all new structures built within Very High Fire Severity Zones after February 28, 2026.
- Existing home and property owners **should aim** to meet Zone 0 guidelines outlined in California Assembly Bill 3074 (AB 3074) by February 2027.



Cal Fire : Zone 0 applies to all structures on your property that you do not want to burn.



**FIRE SAFE
COUNCIL**
of San Diego County



FireSafe Council
UNIVERSITY CITY

Zone 0 implementation – City of San Diego - Phased Approach

– source SDFD presentation to SDC FSC March 2026

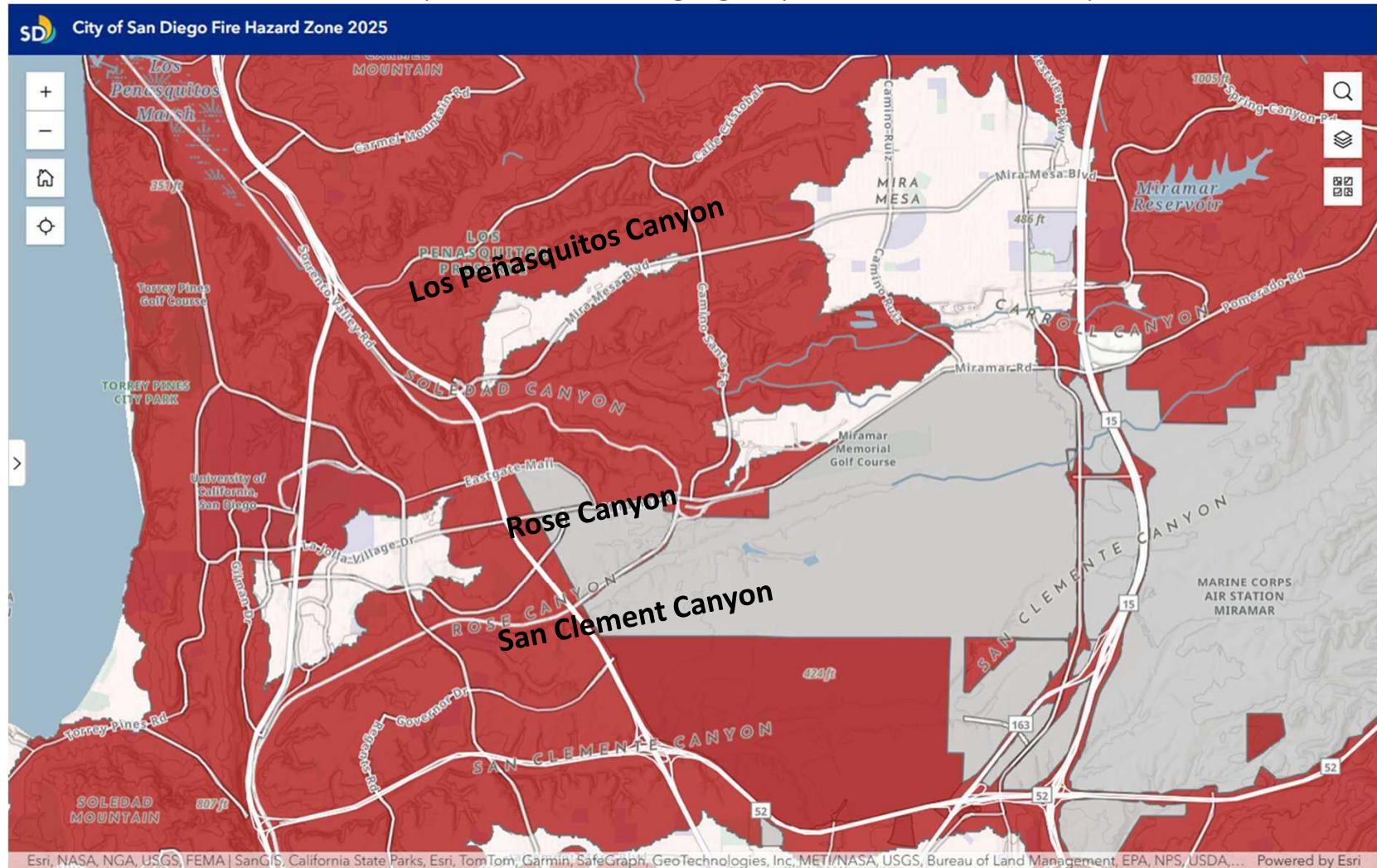
Check the SD Fire Department for updates: www.sandiego.gov/fire

- Zone 0 now required for all new structures built within Very High Fire Severity Zones after February 28, 2026.
- Existing home and property owners **should** aim to meet Zone 0 guidelines outlined in California Assembly Bill 3074 (AB 3074) by February 2027.

- **Year 0- Zone Zero** begins now
 - Education not enforcement
- **Year 1 - Maintenance** begins Feb 28, 2027
 - Removal dead vegetation/debris
 - Removal of under deck storage
 - Removal of firewood piles, trash bins, and other combustibles
- **Year 2- Vegetation Removal or Replacement** begins Feb 28, 2028
 - Removal of non-compliant vegetation
 - Replace with fire-smart plants
- **Year 3 - Compliance** begins Feb 28, 2029
 - Full compliance with Zone 0
 - Compliant fences and gates

City Open Space Parks – Rose and San Clemente Canyons

Habitat Conservation Areas - <https://www.sandiego.gov/park-and-recreation/parks>



Brush Management Schedule and Area Maps

***All dates are subject to change due to field conditions**

Last updated February 20, 2026

- [City Overview](#) (PDF)

Work Area	Name	Start*	Finish*	Status
1	Tierrasanta (PDF)	April 6, 2026	April 12, 2027	Upcoming
2	Del Cerro (PDF)	February 6, 2025	November 29, 2025	Complete
3	Scripps Ranch (PDF)	April 29, 2024	September 12, 2025	Complete
4	Del Mar Heights (PDF)	August 6, 2024	January 15, 2025	Complete
5	Mission Valley and Hills (PDF)	June 1, 2025	February 20, 2026	Complete
6	Tecolote Canyon (PDF)	September 10, 2025	December 23, 2025	Complete
7	East San Diego (PDF)	January 5, 2026	October 1, 2026	In Progress
8	Marian Bear (PDF)	May 12, 2025	January 19, 2026	Complete
9	West Otay (PDF)	February 23, 2026	April 17, 2026	In Progress
10	Los Peñasquitos (PDF)	February 23, 2026	September 30, 2026	In Progress
11	Black Mountair (PDF)	April 20, 2026	November 15, 2026	Upcoming

From: <https://www.sandiego.gov/sites/default/files/brushprioritymaplist.pdf>

Brush Trimming Guideline

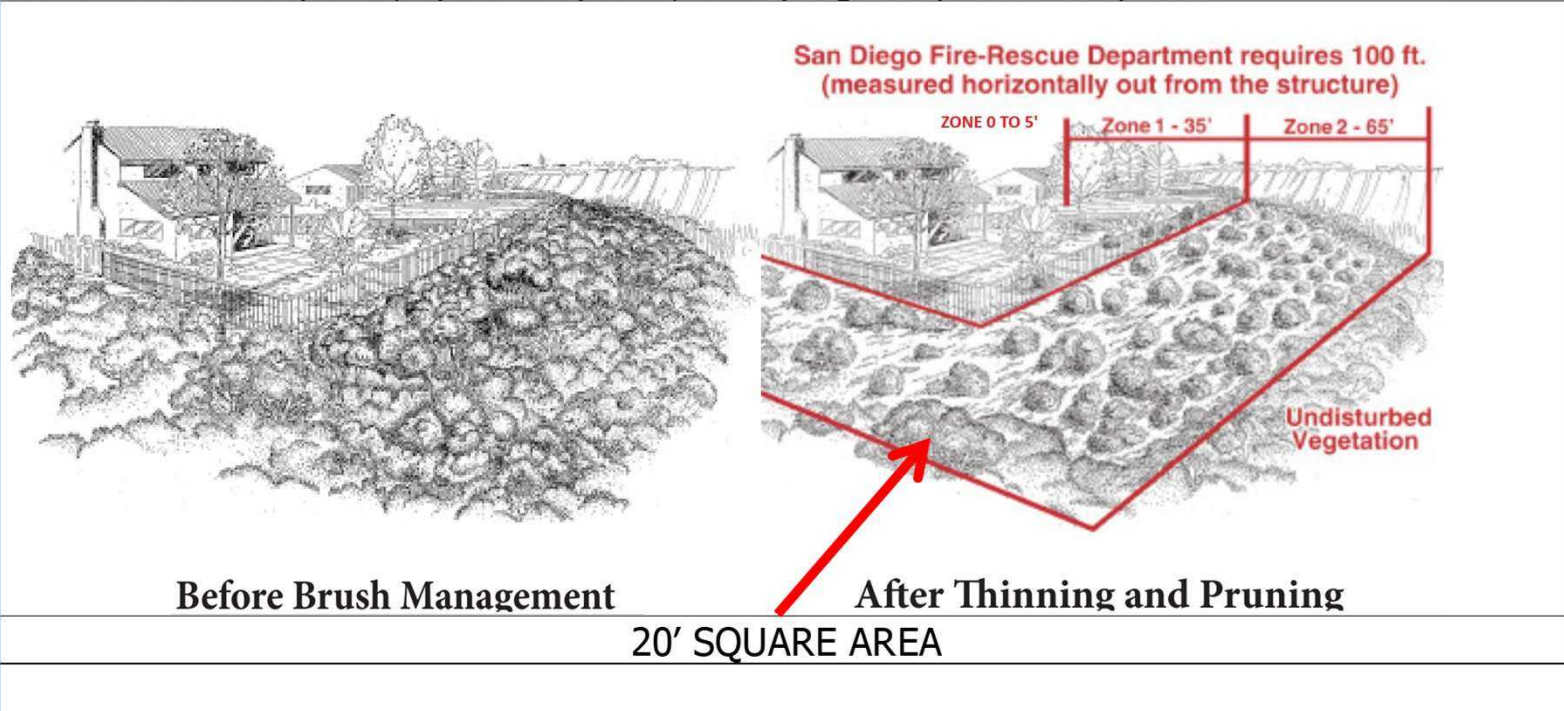
City-Owned Open Space Parks Brush Management Program

www.sandiego.gov/park-and-recreation/parks/osp/brush

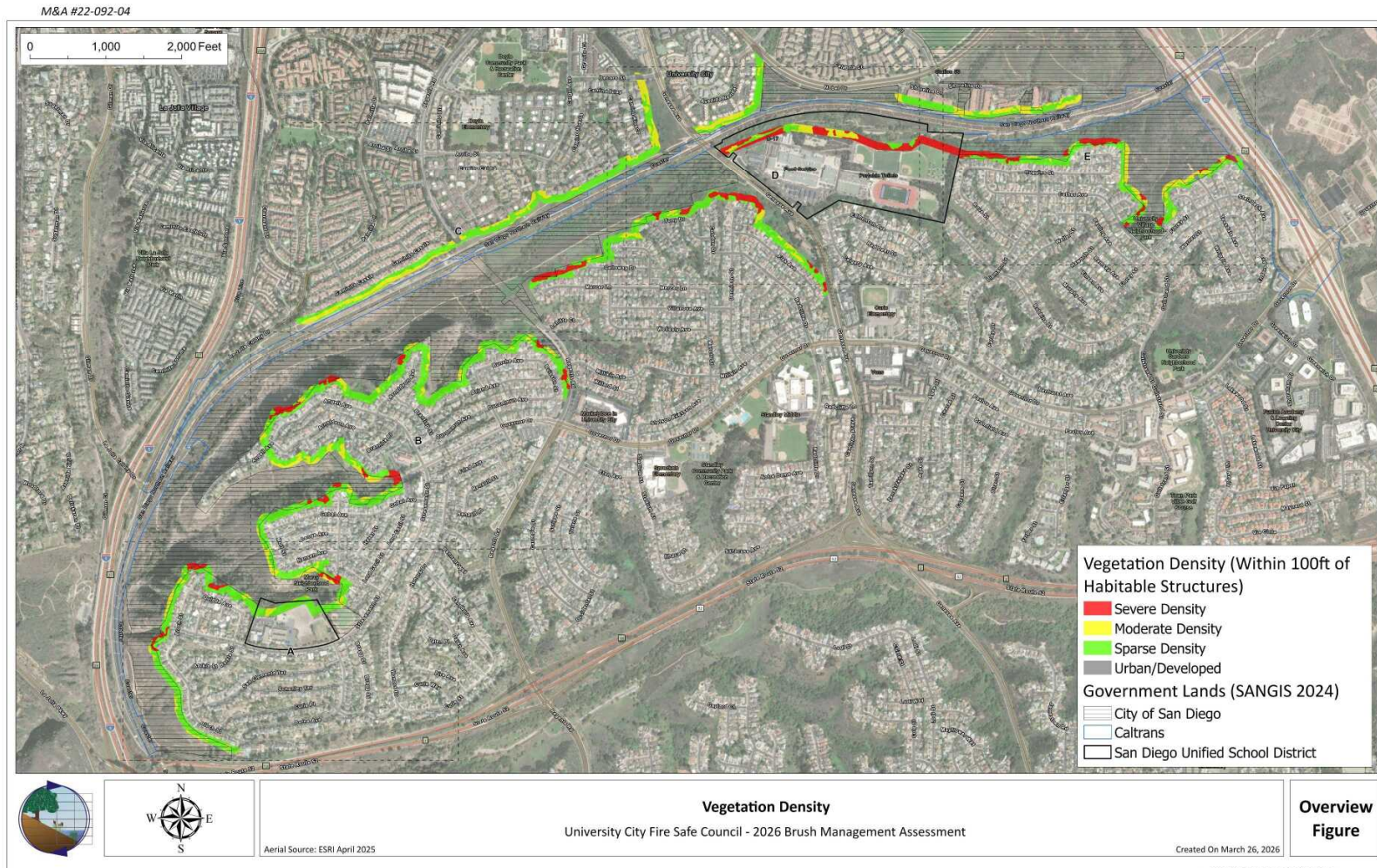
From Brush Trimming Guide

<https://www.sandiego.gov/sites/default/files/brushpdf.pdf>

Start in Zone 2 area by trimming 50% of the plants over 2 feet in height to a height of 6 inches. Don't go any lower than 6 inches so the roots remain to control soil erosion. Trim in a "staggered" pattern. Leave uncut plant groupings up a 20 x 20-foot area separated by groupings of plants. Thinning should **be prioritized as** follows: 1) invasive non-native species; 2) non-native species; 3) flammable native species; 4) native species; and 5) regionally sensitive species.



Brush Density Assessment of Rim of Rose Canyon – March 2026



DYI Brush Management in City–Owned Open Space (Along Canyon Rims)

City of San Diego Open Space Parks Brush Management Program www.sandiego.gov/park-and-recreation/parks/osp/brush

Right of Entry Permit

<https://www.sandiego.gov/park-and-recreation/parks/osp/brushform>

The City of **SAN DIEGO** CONNECT with the City

LEISURE Explore, Play, Events RESIDENT RESOURCES Pay Now, Parking + Help DOING BUSINESS Fix, Plan + Build LIBRARY Learn, Connect + Discover PUBLIC SAFE Police, Fire + Li

Parks & Recreation

Parks & Recreation Home General Info Rec Centers & Pools Regional and Open Space Parks Golf Programs & Events

Open Space Parks Brush Management Right of Entry Application

Permittee information

First Name *

Last Name *

Address *

City - State - Zip Code *

Phone Number *

Reporting Vegetation Overgrowth with "GET IT DONE"

Get It Done: <https://www.sandiego.gov/get-it-done>

Get it Done

Vegetation Encroachment 4 Step Process

<https://getitdone.sandiego.gov/TSWNewReport?type=Vegetation%20Encroachment>



Report a Problem: Vegetation Encroachment

Complete all steps below to report a problem. For emergencies, call 911.

1 Address: Required *

Enter the location of the problem and, if needed, adjust the red map marker below.

Enter address and select from displayed suggestions *

2 Report Category/Type: Required *

[Click To Select Different Report Category/Type](#)

Vegetation Encroachment

Where is the vegetation encroachment?

* --Select Answer--

Is it hazardous?

* --Select Answer--

3 Description: Required *

Describe the issue in detail.

Fire-Rescue Department

Fire-Rescue Home | About SDFD | Careers | Community Outreach | **Community Risk Reduction** | News Center | Permits & Fees | Records & Forms | Training & Education

Citizen Complaint Inspections

Complaint inspections are conducted when a citizen is concerned about a potential fire hazard. Complaints can relate to buildings or brush management/weed abatement. Only complaints within the City of San Diego and Port of San Diego are inspected.

For areas outside of the City, contact the jurisdiction of the address in question.

Complaints Related to Brush Management or Weed Abatement

Community Risk Reduction

- Community Risk Reduction Home
- Citizen Complaint Inspections**
- Codes & Regulations
- False Alarm Program
- Fire Protection Systems
- Grant Funded Projects
- Inspection Services
- Knox Box Program

<https://www.sandiego.gov/fire/community-risk-reduction/citizen-complaint-inspections>

Complaints Related to Brush Management or Weed Abatement

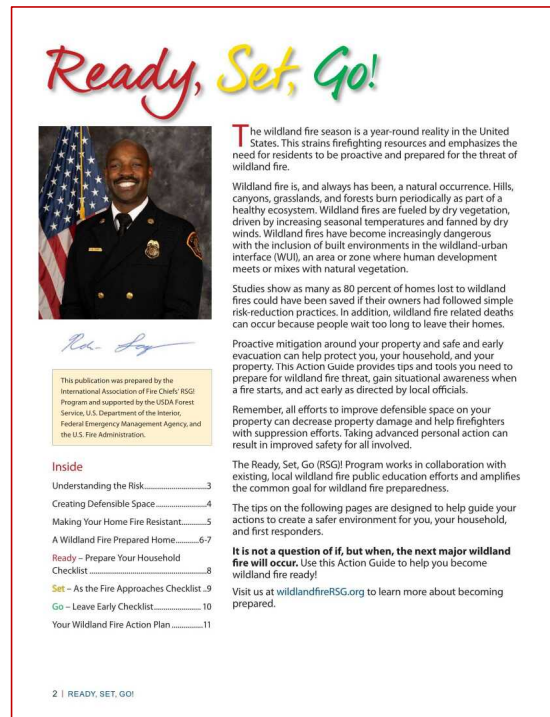
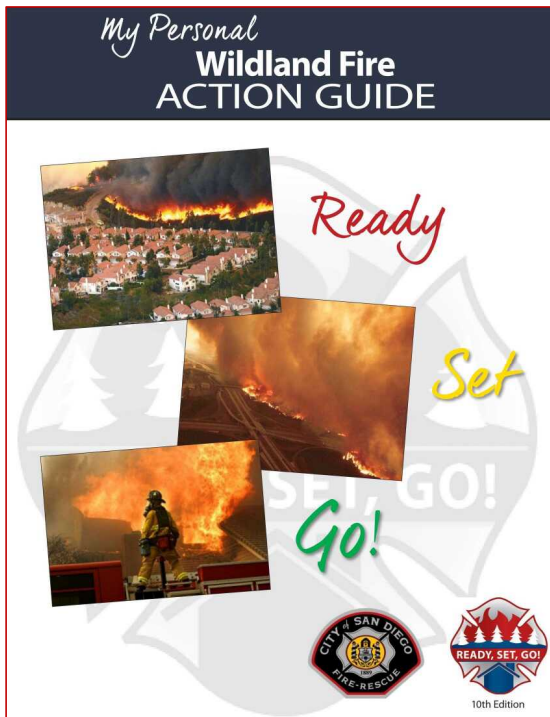
Before submitting your complaint, please review the **Brush Complaint Process** section below to ensure a smooth and efficient submission. This will help SDFD address your concern as promptly and effectively as possible.

Brush Complaint Process

- 1 Verify the Property Address
- 2 Complaints on City Owned Land
- 3 Complaints on Privately Owned Land
- 4 Other Weed Abatement and Brush Complaints

Wildland Fire Action Guide - *Ready Set Go!*

<https://www.sandiego.gov/fire/community-risk-reduction/wildfire-preparedness>



The SDFD Personal Wildland Fire Action Guide provides tips and tools you need to:

- **Get Ready** – prepare yourself and your place for wildland fire threats
- **Get Set** - maintain situational awareness at all times
- **Go** - act early as directed by local officials.



Ready begins when property owners take action. Defensible space and fire-resistant landscaping can protect your home. Source: **Ready Set Go!** pages 3 and 4

Zone 0 : 0 to 5 feet from structure walls

- Create a fire break by removing flammables
- Clear flammable materials away from home
- Clean roofs and gutters
- Remove flammables from under decks

Zone 1 : 5 to 30 feet or to property line

- Thin and prune to create vegetation islands
- Store firewood and garbage cans away
- Prune lower limbs and create separation
- Protect trailers, recreational vehicles, and sheds as if they were a part of your home

Zone 2 : 30 to 100 feet or to property line

- Maintain 10 feet separation at tree tops
- Create space between trees and shrubs
- Create separation with neighboring properties

Ready begins with property owners taking action.

Defensible space around property created with different types of rock mulch.



Defensible space works! Well-maintained, fire-resistant vegetation.



Photo credit: Paul Greiner.



Red Flag Warning

Defensible Space and Fire-Resistant Landscaping Can Protect Your Home

If you live next to a dense vegetation area, the WUI, you should provide defensible space to better protect your home. This will create a safer area for firefighters to operate if they have the capacity to defend your home. Creating a buffer zone by removing weeds, dried grass, brush, and other vegetation helps keep the fire away from your home and reduces the risk of ignition from flying embers.

Consider This

Unmanaged and overgrown vegetation between and around homes increases the risk of wildland fire spreading throughout the community and endangering lives and property. Pre-fire planning through mitigation and vegetation management allows firefighters the ability to fight wildland fires more safely. The work you complete today may save your home and protect a firefighter tomorrow.

Ember Zone

An ember is a small, glowing fragment from a wildland fire that is carried by the wind. Embers are light enough to travel long distances and are the primary reason homes ignite, often at significant distances from the actual flame front of a wildland fire. Embers travel inside your home through vents, windows, and other openings.

Homes on the Wildland Boundary are at Risk

If your home is within one mile of a natural area, it may be considered part of an ember zone. Keep in mind, embers can destroy homes or neighborhoods far from the actual front of the fire. Use the information in this guide to help you prepare your property.

Red Flag Warning

A Red Flag Warning is issued by the National Weather Service when low humidity, warm temperatures, dry fuels, and strong winds could combine to produce extreme fire behavior. Fires occurring during a Red Flag day can be very dangerous and spread rapidly. You should always follow the instructions provided by your local emergency response organizations and be prepared to take immediate action.

Ready Create Defensible Space

Defensible space is the area around your home in which vegetation, debris, and other combustible fuels have been removed to slow the spread of fire to and from the home. It can better protect the home from igniting due to direct flame contact and radiant heat. Defensible space is essential to help protect a structure and create a safer area for firefighters during a wildland fire.

You should create defensible space by removing weeds, brush, and firewood, and by spacing out vegetation around your property. Although this might seem like a daunting task, we recommend starting in Zone 0 and working your way out. Follow the considerations below for each zone and your property can become safer with each step.



ZONE 0	ZONE 1	ZONE 2
0-5 feet around your home or to property line <ul style="list-style-type: none"> • Use hard scrapes such as concrete or noncombustible rock mulch around your home. • Clean roofs and gutters of dead leaves, debris, and pine needles. • Store firewood and other combustible materials away from your home, garage, or attached deck. • Prune away touching or over-hanging branches from the roof to a distance of at least 10 feet. • Replace or repair any loose or missing shingles or roof tiles to prevent ember penetration. • Rake and remove flammable vegetation, such as leaves and needles or wood mulch, from underneath your deck and away from your home. • Use non-wood, low-growing herbaceous vegetation. Succulents, or other fire-resistant plants, are recommended choices. 	5-30 feet around your home or to property line <ul style="list-style-type: none"> • Create vegetation groups or islands to break up continuous fuels around your home. • Remove ladder fuels to create a separation between low-level vegetation and tree canopies to keep fire from climbing into trees. • Remove leaf and needle debris from the yard. • Keep lawns, native grasses, and wildflowers less than four inches in height. • Store firewood and other combustible materials away from outbuildings such as a shed or barn. • Move trailers, recreational vehicles, storage sheds, and other combustible structures out of this zone and into Zone 2, if unable to move, create defensible space around them as if they were a part of your home. 	30-100 feet around your home or to property line <ul style="list-style-type: none"> • Create and maintain a minimum of 10 feet between the tops of trees. • Safely remove ladder fuels up to a height of 10 feet, while retaining at least 75 percent of the foliage, to create separation between the ground and tree branches. This keeps fire from climbing into the tree canopies. • Store firewood in this area, keeping it a safe distance from your structure. • Create space between shrubs and trees to eliminate a continuous fuel bed at the ground level. • Remove dead trees, shrubs, and all other dead or dry vegetation. • Create separation between your property and your neighbors. Consider that your trees may pose a greater risk to your neighbor's home than to your own.

Remember the Ember Zone

Embers are burning pieces of airborne material that can be carried more than a mile by the wind. Research points to embers and small flames as the main ways homes ignite in wildland fires.



Harden Your Home and Create Your Own Action Plan: source Ready Set Go!

Create your Go Kit: source Red Cross at <https://www.redcross.org/get-help/how-to-prepare-for-emergencies/survival-kit-supplies.html>

Ready Make Your Home Fire Resistant - Harden Your Home

Construction materials and the quality of the defensible space surrounding the structure are what increases the chance of survival in a wildland fire. Embers from a wildland fire will find the weak spot in your home's fire protection scheme and can easily lodge in small, overlooked, or seemingly inconsequential areas. Look at where snow drifts from your roof and deck and around your home—these are the areas where embers will collect. Below are some home hardening measures you can take to safeguard your home.



Balconies and Decks
Construct your balconies or decks with **noncombustible materials**, and do not store combustible items underneath them. If there is a fire threat, bring any **furniture** into your home. Embers can collect in or on combustible surfaces, or beneath decks and balconies, igniting the material and giving a path for the fire to enter your home. **Remove pine needles, leaves, grass, or any other flammable materials** from underneath your deck.



Roofs
Roofs are vulnerable to embers that become lodged and can start a fire, especially anywhere on the roof with litter building. **Roof valleys**, open ends of **barrel tiles**, and **rain gutters** are all points of entry. Block off all open spaces, and regularly inspect these areas. Remove any combustible material.



Eaves
Embers can gather under open eaves and ignite combustible material. Enclose your eaves with **noncombustible or ignition-resistant materials** to prevent ember intrusion, and regularly clear away debris that collects here.



Vents
Embers can enter the attic or other concealed spaces and ignite combustible materials through open and unsecured vents. Vents in eaves, gables and cornices are particularly vulnerable if not properly screened with wire mesh. Use **corrosion resistant metal mesh** to screen all vents, and check them regularly to remove any debris that collects in front of the screen.



Walls and Fencing
Combustible siding or fencing provides surfaces and crevices for embers to nestle and ignite. Ensure wooden fences do not connect directly to the house. Create a **break in the fence** by using a gate or noncombustible substitute to connect to the house. Build or remodel with **noncombustible or ignition-resistant materials** whenever possible, regularly clear away debris from any crevices, and perform annual upkeep.



Windows and Doors
Embers can enter gaps in doors, including garage doors. Install **weather proofing** around your garage door, and if your garage is attached to your home, make sure the interior door is solid and on **self-closing hinges**. Plants or combustible storage near windows can be ignited from embers and generate heat that can break windows and/or melt combustible frames. Wherever possible, use **dual-paned windows with tempered glass**, as they are less likely to shatter from radiant heat.

Create Your Own Action Plan

Your Wildland Fire Action Plan must be prepared with all members of your household well in advance of a wildland fire. Use these checklists to help you get Ready and Set with situational awareness in the threat of wildland fire.

Ready Get Ready

- Create an Action Plan that includes evacuation meeting locations and communication plans - rehearse it regularly. Include the evacuation of all pets and large animals, which may include horses and livestock, in your plan.
- Sign up for your local emergency notification system. Check your local fire department or emergency management agency websites for information on the system used in your area.
- Designate an emergency meeting location outside the wildland fire hazard area.
- Plan and practice several different evacuation routes.
- Have fire extinguishers on hand and teach your household how to use them.
- Ensure that everyone in your household knows where your gas, electric, and water main shut-off controls are located and how to use them.
- Assemble a Go Kit as recommended by the American Red Cross. Keep an extra kit in your vehicle. Check this page for a list of recommended emergency supplies.
- Check this page for a list of recommended emergency supplies.
- Have a portable radio or scanner so you can stay updated on the fire and weather emergency announcements.

EMERGENCY SUPPLIES LIST FOR GO KIT

The American Red Cross recommends every household have an emergency supply kit assembled long before a wildland fire or other emergency occurs. Use the checklist below to help assemble yours. For more information on emergency supplies visit [redcross.org/get-help](https://www.redcross.org/get-help).

- Three-day supply of water (one gallon per person, per day) and non-perishable food for household members (3 day supply).
- First aid kit and sanitation supplies, including toilet paper and baby wipes.
- Flashlight, battery-powered radio, and extra batteries.
- An extra set of car keys, credit cards, cash, or traveler's checks.
- Extra eyeglasses, contact lenses, prescriptions, and medications.
- Important household member documents and contact numbers, including insurance documents.
- Map marked with evacuation routes. It is important to have a printed map in case your phone dies. It may also be easier to see the printed map than a phone screen under smoky conditions.
- Easily carried valuables and irreplaceable items.
- Personal electronic devices and chargers.
- Keep a pair of old shoes and a flashlight handy in case of a sudden evacuation at night.

Make Your Home Fire Resistant

- Noncombustible materials for decks
- Vent openings screened with metal mesh
- Eaves enclosed with noncombustible materials
- Non-combustible fence / gate at house wall
- Dual-pane windows with tempered glass
- Weather proofing around garage doors

Assemble Emergency Go Kit

- Water, first aid kit, flashlight, identification & medication, glasses
- Household documents, paper maps, personal electronic devices, chargers, keys, shoes, cash

Create Action Plan

- Plan and practice several escape routes
- Designate meeting place
- Sign up for emergency apps

WILDLAND FIRE ACTION GUIDE | 5

8 | READY, SET, GO!

Ready Set Go – Wildfire Preparedness

<https://www.sandiego.gov/fire/community-risk-reduction/wildfire-preparedness>

Set Prepare and Be Aware

- Monitor fire weather conditions and fire status. Check your local fire department or emergency management websites and social media accounts for wildland fire information. Stay tuned to your TV or local radio stations for updates, including Red Flag Warnings in your area.
- Alert household and neighbors.
- Dress in appropriate clothing (i.e., clothing made from natural fibers, such as cotton, and work boots). Have goggles and a dry bandana or particle mask handy.
- Ensure your Go Kit includes all necessary items, such as a battery powered radio, spare batteries, emergency contact numbers, and drinking water.
- Remain close to your house, drink plenty of water, and ensure your household members and pets are accounted for and ready to leave.

Turn off propane tanks and other gas at the meter.

- Don't leave sprinklers on or water running. They can affect critical water pressure.
- Leave exterior lights on.
- Back your car into the driveway to facilitate a quick departure. Shut doors and roll up windows.
- Have a ladder ready to use to cover attic vents. Use pre-cut plywood or commercial seals. Use the same for ground vents. Do so in a safe manner, and only if time permits.
- Patrol your property and extinguish small fires, if you can do so safely, until you leave.

IF YOU ARE TRAPPED: SURVIVAL TIPS

- If you have become trapped and cannot evacuate, call 9-1-1 immediately.
- Stay in your home, sheltering away from walls, until the fire passes or emergency personnel tell you differently. Follow their instructions and commands.
- Look for spot fires and extinguish if found inside house.
- Wear long sleeves, long pants, and a bandana made of natural fibers, such as cotton.
- Stay hydrated.
- Ensure you can exit the home if it catches fire. Remember, if it's hot inside the house, it is four to five times hotter outside. Be prepared.
- Fill sinks and tubs for an emergency water supply.
- Place wet towels under doors to keep smoke and embers out.
- After the fire has passed, check your roof and extinguish any fires, sparks, or embers if you are able to safely do so. Check the attic as well.

INSIDE CHECKLIST, IF TIME ALLOWS

- Close all windows and doors.
- Remove all shades and curtains from windows and ensure all blinds remain open, unless you have metal blinds. Close all metal blinds.
- Move furniture to the center of the room, away from windows and doors.
- Turn off pilot lights and air conditioning units.
- Leave your lights on so firefighters can see your house in smoky conditions

OUTSIDE CHECKLIST, IF TIME ALLOWS

- Make sure combustible items are a safe distance away from the exterior of the house (e.g., patio furniture, children's toys, door mats, etc.). If you have time, place these items inside your garage or home where they will not become a hazard.

Go! Act Early

Leaving early gives you and your household members the best chance of surviving a wildland fire. You also help firefighters by keeping roads clear of congestion, enabling them to move more freely and do their job in a safer environment. Be sure to follow the direction of your local authorities.

WHERE TO GO

Go to a predetermined, low-risk area such as a relative's house, a Red Cross shelter or evacuation center, motel, etc.

HOW TO GET THERE

Have several travel routes in case one route is blocked by the fire or by emergency vehicles. Choose the safest route away from the fire.

WHAT TO TAKE

Take your Go Kit containing your household members' and pet's necessary items.

REMEMBER THE 8 P'S!

- People & Pets
- Pictures & Photo Albums
- PC's
- Papers (important)
- Prescriptions & Medications (for your pets too)
- Plastics (credit cards)
- Personal Devices (phones and chargers)
- Passports & IDs

WHEN TO LEAVE

Do not wait to be advised to leave if there is a possible threat to your home or evacuation route. Leave early enough to avoid being caught in fire, smoke, or road congestion. If you are advised to leave by local authorities, do not hesitate!

WILDLAND FIRE ACTION GUIDE | 9

10 | READY, SET, GO!

Prepare and Be Aware

- Monitor fire weather conditions
- Update your Go Kit
- Move combustibles away from structure
- Turn off propane tanks and sprinklers
- Leave lights on; back car into driveway
- **Evacuation Warning** – Leave Early
- **Evacuation Order** – Get Out Now

Survival Tips

- Follow instructions on page 9 of Ready Set Go guide
- Stay hydrated and take steps to keep smoke and embers out of shelter



Evacuation Planning Starts at Home
Fire Agencies Use Genasys Protect for Evacuation Notifications
Genasys Protect - <https://protect.genasys.com/search>

KNOW YOUR
ZONE

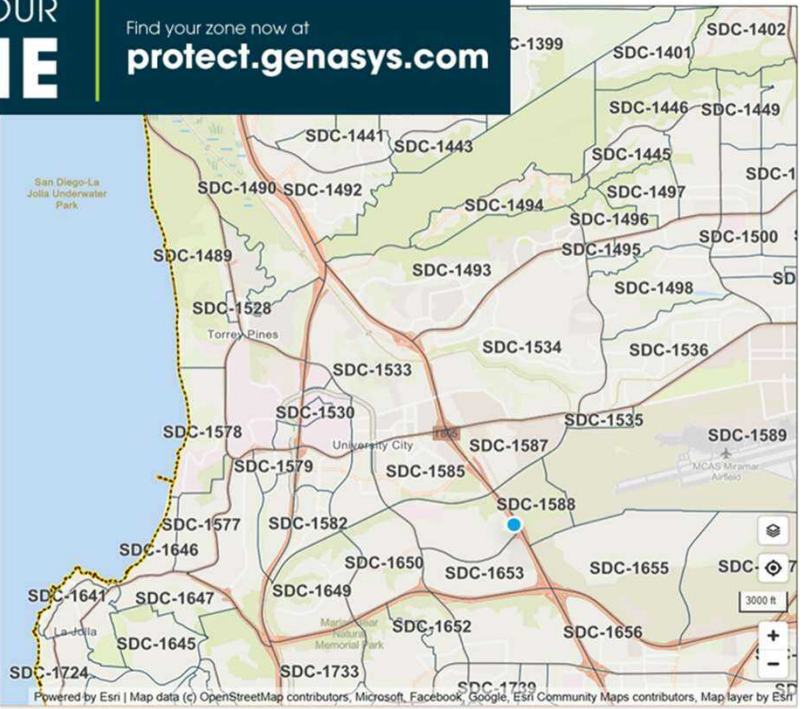
Find your zone now at
protect.genasys.com

Know Your Evacuation Zone

Download the [Genasys Protect](#) app.

Turn on your location to get notified about danger and evacuation orders wherever you are.

protect.genasys.com/download

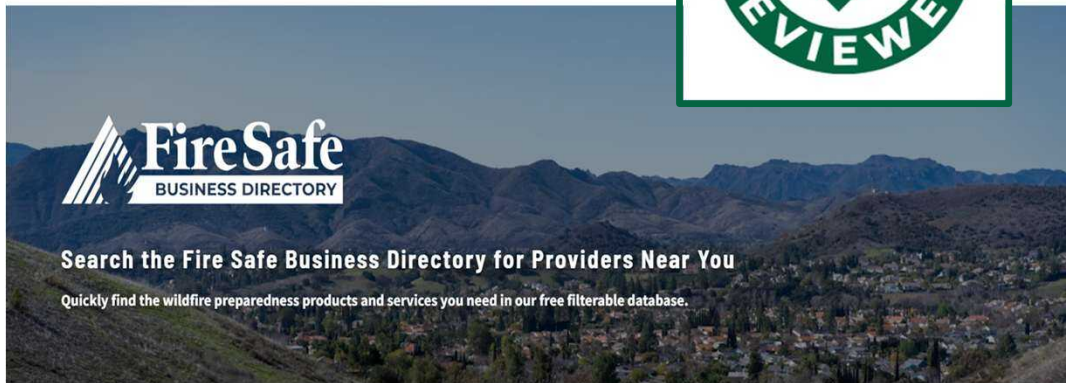


- Activate the Genasys Protect App and enable the location feature
- Pre-determine and pre-plan your home escape and neighborhood evacuation routes
- Know your Evacuation Zone
 - Determine at least two ways out of your place / home
 - Determine at least two ways out of your neighborhood
- Evacuation Warning – prepare to act early
- Evacuation Order – go now!
- Go to a safe area
- Follow directions of fire responders



Fire Safe Business Directory

<https://cafiresafecouncil.org/fire-safe-business-directory/>



Fire Safe Business Directory Vetting Process

- **Reviewed** - Businesses in the “Reviewed” section are checked for current:
 - Liability and Workers Compensation Insurance
 - Licensed and/or Bonded
 - Three positive references
- **Other** - Businesses in the “Other” section of the Directory are not reviewed for these items or any other items for inclusion.



2026 - New Laws - **California Wildfire Task Force** - Wildfire & Forest Resilience

<https://wildfiretaskforce.org/new-laws-strengthen-home-hardening-insurance-access-and-wildfire-risk-transparency/>

New Laws Strengthen Home Hardening, Insurance Access, and Wildfire Risk Transparency



- **California Safe Homes Act (AB 888)**
 - to Strengthen Home Hardening
- **Insurance and Wildfire Safety Act (AB 1)**
 - for Insurance Access
- **California Wildfire Public Model Act (SB 429)**
 - for Wildfire Risk Transparency



Home Insurance Resources from CA Dept of Insurance CA FAIR Plan :

<https://www.insurance.ca.gov/01-consumers/200-wrr/California-FAIR-Plan.cfm>



- Shop the market. State of California tips for finding insurance: https://www.insurance.ca.gov/01-consumers/105-type/5-residential/Top10Tips_FindingResidentialIns.cfm
- Still having difficulty obtaining residential or commercial insurance?
 - Apply for coverage under the CA FAIR Plan through an agent or broker licensed to sell property insurance.
 - Contact the FAIR Plan directly through website at : <https://www.cfpnet.com/>
 - CA Dept of Insurance recommends you contact a licensed insurance broker that is registered to sell FAIR Plan coverage. Find a Broker: https://interactive.web.insurance.ca.gov/apex_extprd/f?p=400:50
 - CA Fair Plan: <https://www.cfpnet.com/>



San Diego Fire-Rescue resources

- Fire-Rescue : <https://www.sandiego.gov/fire>
- Guide to Defensible Space for Property Owners : <https://www.sandiego.gov/fire/community-risk-reduction/defensible-space-property-owners>
- Home Risk Assessment : <https://www.sandiego.gov/fire/community-risk-reduction/defensible-space-property-owners#resources>
- Very High Fire Hazard Severity Zones : <https://www.sandiego.gov/fire/community-risk-reduction/fire-hazard-severity-zones>
- Brush Management Guide Definitions : <https://www.sandiego.gov/fire/community-risk-reduction/wildland-management-enforcement/definitions>
- Wildfire Preparedness : <https://www.sandiego.gov/fire/community-risk-reduction/wildfire-preparedness>
- Stay Informed : <https://www.sandiego.gov/oes/informed>
- University City Fire Safe Council : <https://www.universitycitynews.org/fire-safe-council-university-city/>



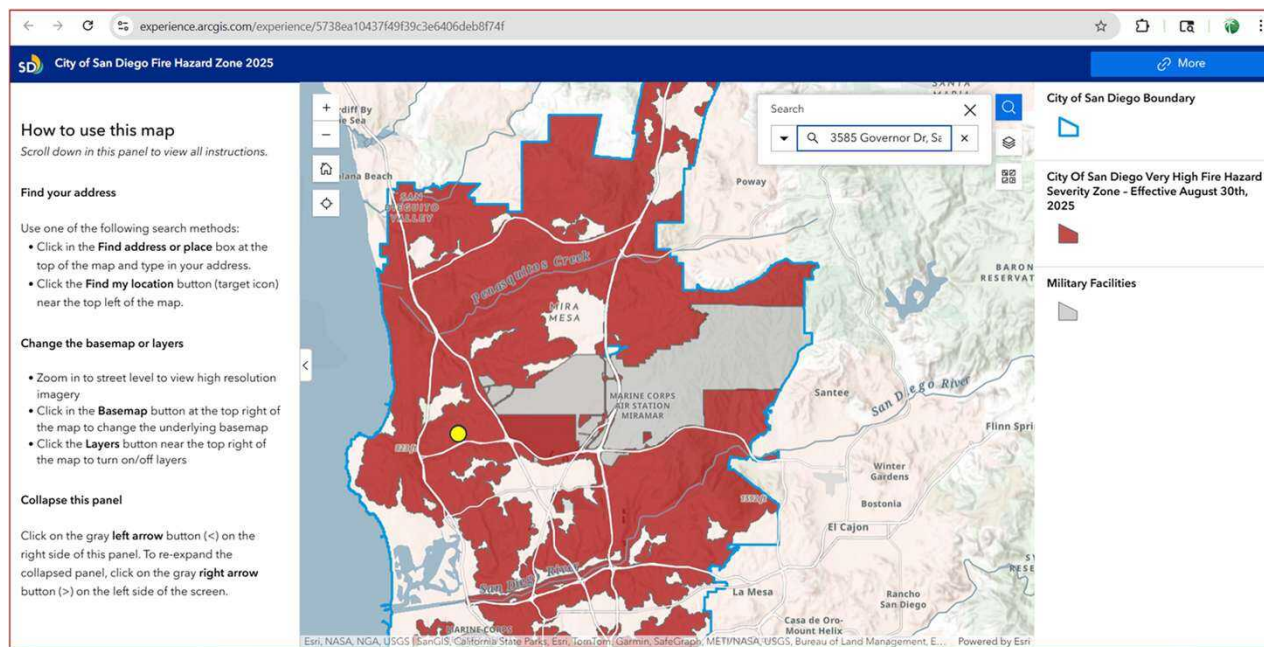
**FIRE SAFE
COUNCIL**
of San Diego County



FireSafe Council
UNIVERSITY CITY

Demo – High Fire Hazard Severity Zones

<https://www.sandiego.gov/fire/community-risk-reduction/fire-hazard-severity-zones>



**FIRE SAFE
COUNCIL**
of San Diego County



FireSafe Council
UNIVERSITY CITY

Demo - Zone Zero and Brush Management Zones

California Assembly Bill 3074 (AB 3074)

<https://www.sandiego.gov/fire/community-risk-reduction/defensible-space-property-owners>

The screenshot shows the City of San Diego Fire-Rescue Department website. The header includes the city logo, a search bar, and navigation links for various services like Leisure, Resident Resources, and Public Safety. The main content area features a large banner image of fire trucks and a navigation menu with categories such as Fire-Rescue Home, About SDFD, Careers, Community Outreach, Community Risk Reduction, News Center, Permits & Fees, Records & Forms, and Training & Education.

Guide to Defensible Space: Property Owners


On this page:

- [Why Brush Management Matters](#)
- [Brush Management Zones](#)
- [Zone 0](#)
- [Zone 1](#)
- [Zone 2](#)
- [Timeframes & Sensitive Habitats](#)
- [Other Resources](#)

Why Brush Management Matters


The city of San Diego has over 500 linear miles of wildland-urban interface, which is where homes meet dense vegetation in canyons and other open space areas. Years of drought worsened by climate change have increased the risk for dangerous wildfires to occur in these areas.

Defensible space is the buffer zone you should create around a structure to protect it. Creating and maintaining defensible space around your home helps slow or stop the spread of wildfire and gives firefighters room to safely defend your property from flames and wind-driven embers.



Community Risk Reduction

- [Community Risk Reduction Home](#)
- [Citizen Complaint Inspections](#)
- [Codes & Regulations](#)
- [False Alarm Program](#)
- [Fire Protection Systems](#)
- [Grant Funded Projects](#)
- [Inspection Services](#)
- [Knox Box Program](#)
- [Policies](#)
- [Wildfire Preparedness](#)
- [Wildfire Prevention and Mitigation](#)
- [Very High Fire Hazard Severity Zones](#)

[View the MHPA boundary](#)
[View MSCP Covered Species](#) 
[Find out what kind of biological resources are on my property](#)
[View Land Development Code](#)
[View land use adjacency guidelines](#)
[View MSCP Rare Plant Monitoring Plan Revision](#)

*Demo: Evacuation Planning
with Genasys Protect*

<https://protect.genasys.com/search>

KNOW YOUR
ZONE

Find your zone now at
protect.genasys.com



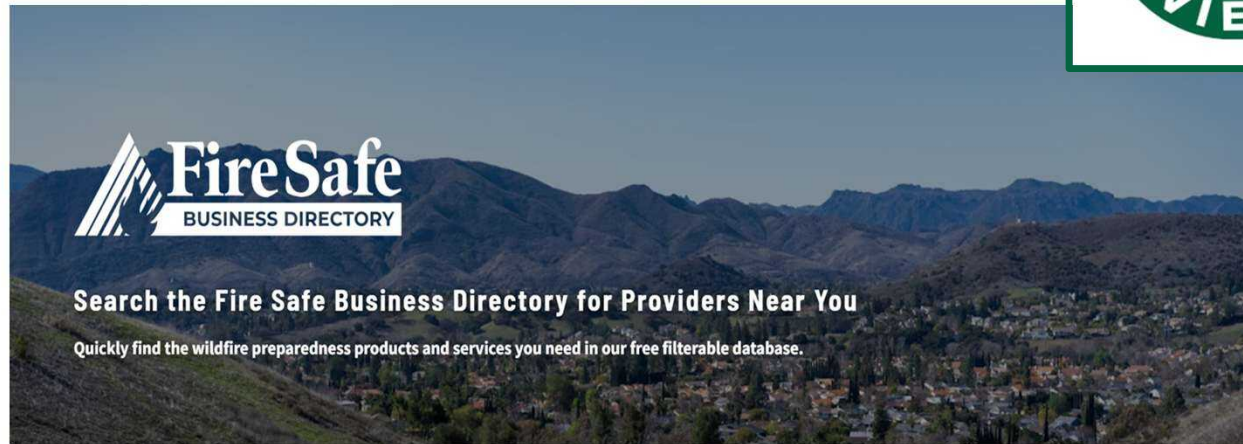
**FIRE SAFE
COUNCIL**
of San Diego County



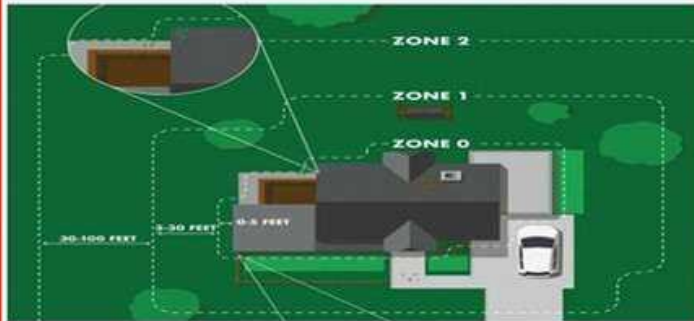
FireSafe Council
UNIVERSITY CITY

Demo - Fire Safe Business Directory

<https://cafiresafecouncil.org/about-fire-safe-business-directory/>



Everything you need to know about implementing
Zone 0 but were afraid to ask.



Fire Safe Your Place

Join us to learn more about *Creating Zone Zero Defensible Space* to make a fire break around your place; *Hardening Your Home* to make your home less likely to burn; *Pre-Planning for Evacuation* to know how to get out of your home and out of your neighborhood.

Monday, April 13, 6 pm via Zoom

bit.ly/ZoomFireSafeCouncilUniversityCity



**FIRE SAFE
COUNCIL**
of San Diego County



FireSafe Council
UNIVERSITY CITY