



## Join Us to Learn How to *Fire Safe Your Landscape*

### Selecting and Strategically Placing Fire Safe Plants Maintaining Landscape for Wildfire Safety

- **Create Defensible Space** to make a fire break around your place
- **Harden Your Home** to make your home less likely to burn
- **Pre-Plan for Evacuation** to get out of home and neighborhood

**Monday, May 11, 6 pm via Zoom**

Join Zoom : [bit.ly/ZoomFireSafeCouncilUniversityCity](https://bit.ly/ZoomFireSafeCouncilUniversityCity)



[www.universitycitynews.org/UCCA/FireSafeCouncil](http://www.universitycitynews.org/UCCA/FireSafeCouncil)

Fire-resistant  
does not  
mean  
fireproof!

Even fire-  
resistant  
plant will  
burn if not  
well  
maintained.

Keep all  
landscape  
plants  
healthy with  
appropriate  
water, proper  
pruning and  
care.



### Fire Safe Your Landscape presented by University City Fire Safe Council

**Saturday, May 16, 10 to 12 noon**  
**Standley Park**  
**3585 Governor Drive**  
**University City**



Activities for Kids &  
Adults

High Fire Hazard Zones

Zone Zero and Fire-  
Smart Vegetation

Canyon Concerns

Home Hardening

Fire Escape

Fire Truck Visit  
(scheduled at 10 am)

Give-aways & Games

For more, visit:  
[universitycitynews.org/fire-  
safe-council-university-city](http://universitycitynews.org/fire-safe-council-university-city)



SD Fire-Rescue Department



**University City Fire Safe Council** - The role of a Fire Safe Council is to provide education and outreach to prevent and prepare for fire so that all are well-protected from the threats of structure and wildfire. Our focus areas are fire safety education, emergency preparedness, and risk reduction.

Our fire agency is the City of San Diego Fire-Rescue Department.

- We are University City volunteers who came together in September 2019 as part of a network of volunteer community Fire Safe Councils in San Diego County and throughout the state of California.
- We are supported by the Fire Safe Council of San Diego County and the San Diego Regional Fire Foundation.

- UC Fire Safe Council – <https://www.universitycitynews.org/fire-safe-council-university-city/>
- Fire Safe Council of San Diego County - <https://firesafesdcounty.org/>
- San Diego Regional Fire Foundation – <https://sdfirefoundation.org/>
- San Diego Fire Rescue Department – <https://www.sandiego.gov/fire>
- Contact Us – [UCFireSafeCouncil@gmail.com](mailto:UCFireSafeCouncil@gmail.com)
- Fire Safe Business Directory - <https://cafiresafecouncil.org/fire-safe-business-directory/>



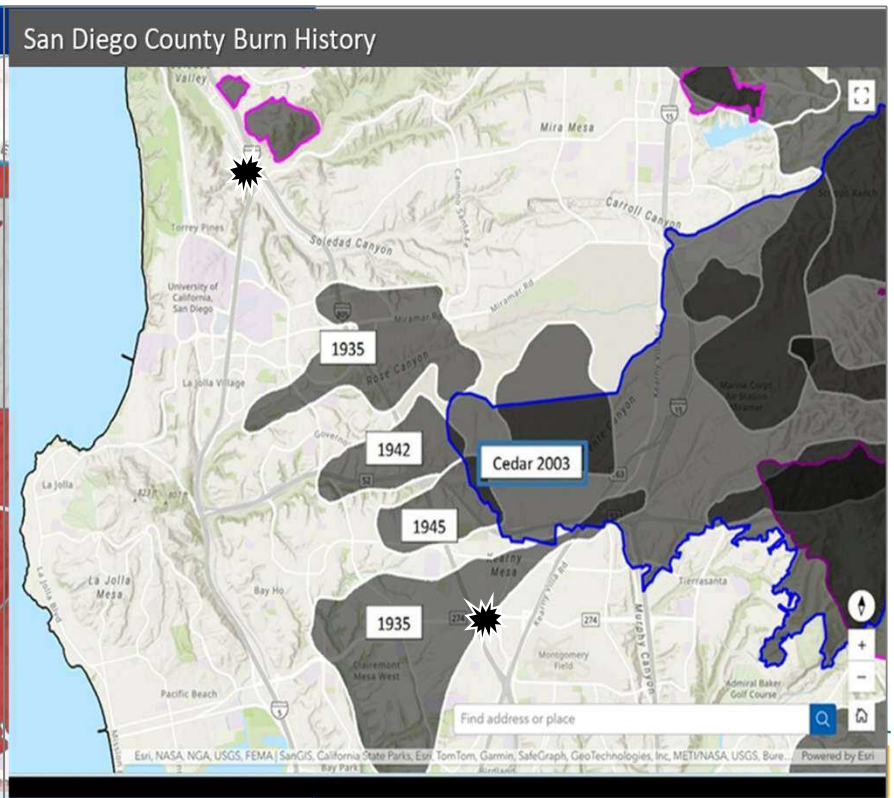
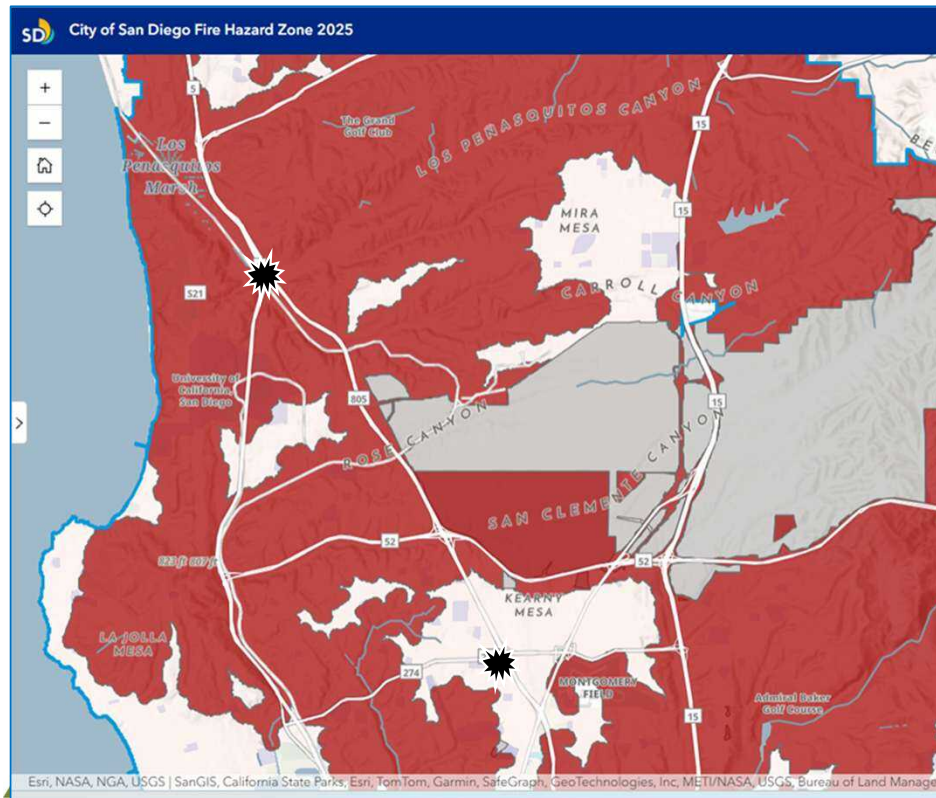
# *Fire Safe Your Landscape May 11, 6 pm* - Topics

- Fire History
- Fire Hazard Severity Zones
- Zone Zero Implementation and Enforcement
- Defensible Space and Fire Safe Landscapes
- Brush Density Audit Rose Canyon Rim
- Fuel Reduction
- Home Hardening
- Emergency Supplies
- SB 79 Transit Oriented Development
- New Legislation
- Escape and Evacuation Routes
- Genasys Protect
- Insurance Coverage
- Brush Management in Canyons
- Fire Safe Resources
- Fire Safe Vendor List



**Fire Hazard Zone:** factors include Vegetation Density, Terrain (Steep Slopes / Slope Severity), Climate, Burn History

- 2020 – Valley Fire - 16,000 acres
- 2016 – Border Fire – 7,600 acres
- 2007 – Harris Fire – 90,000 acres
- 2007 – Witch Fire – 197,000 acres
- 2003 – Cedar Fire – 280,000 acres





# SD Fire-Rescue - Zone 0 Guidelines for Existing Structures

<https://www.sandiego.gov/fire/community-risk-reduction/defensible-space-property-owners>

## Zone 0 Guidelines for Existing Structures

San Diego Fire-Rescue  
Community Risk Reduction Division



# SD Fire-Rescue - Zone 0 Guidelines for Existing Structures

<https://www.sandiego.gov/fire/community-risk-reduction/defensible-space-property-owners>

**SD Fire-Rescue**  
**Zone 0**  
Phased Compliance Timeline

Year 0 2026	Year 1 2027	Year 2 2028	Year 3 2029
<b>Education &amp; Awareness</b>	<b>Basic Maintenance &amp; Immediate Risk Reduction</b>	<b>Vegetation Compliance</b>	<b>Full Compliance</b>
<ul style="list-style-type: none"> <li>Door-to-door public education</li> <li>Community outreach events</li> <li>Distribution of Zone 0 guidance materials</li> </ul>	<ul style="list-style-type: none"> <li>Remove dead vegetation and debris</li> <li>Relocate firewood, trash, bins, and combustibles</li> <li>Clear under-deck storage</li> </ul>	<ul style="list-style-type: none"> <li>Remove non-compliant vegetation</li> <li>Replace with fire-smart vegetation</li> <li>Eliminate fuel continuity near structures</li> </ul>	<ul style="list-style-type: none"> <li>Achieve full Zone 0 compliance</li> <li>Replace non-compliant fences, gates, and outbuildings</li> <li>Maintain long-term defensible space standards</li> </ul>
Year 0 Starting Feb, 2026	Year 1 Starting Feb, 2027	Year 2 Starting Feb, 2028	Year 3 Starting Feb, 2029
<b>No Enforcement</b> Education only	<b>Soft Enforcement</b> Voluntary compliance	<b>Moderate Enforcement</b> Targeted compliance actions	<b>Full Enforcement</b> All provisions enforceable

## Ready Zone 0 - How to Create Defensible Space

Defensible space is the area around your home in which vegetation, debris, and other combustible fuels have been removed to slow the spread of fire to and from the home.

It can better protect the home from igniting due to direct flame contact and radiant heat. Defensible space is essential to help protect a structure and create a safer area for firefighters during a wildland fire.

You should create defensible space by removing weeds, brush, and firewood, and by spacing out vegetation around your property.

Although this might seem like a daunting task, we recommend starting in Zone 0 and working your way out. Follow the considerations below for each zone and your property can become safer with each step.



ZONE 0	ZONE 1	ZONE 2
<b>0-5 feet around your home or to property line</b> <ul style="list-style-type: none"> <li>Use hard scrape such as concrete or noncombustible rock mulch around your home.</li> <li>Clean roofs and gutters of dead leaves, debris, and pine needles.</li> <li>Store firewood and other combustible materials away from your home, garage, or attached deck.</li> <li>Prune away touching or over-hanging branches from the roof to a distance of at least 10 feet.</li> <li>Replace or repair any loose or missing shingles or roof tiles to prevent ember penetration.</li> <li>Rake and remove flammable vegetation, such as leaves and needles or wood mulch, from underneath your deck and away from your home.</li> <li>Use non-wood, low-growing herbaceous vegetation. Succulents, or other fire-resistant plants, are recommended choices.</li> </ul>	<b>5-30 feet around your home or to property line</b> <ul style="list-style-type: none"> <li>Create vegetation groups or islands to break up continuous fuels around your home.</li> <li>Remove ladder fuels to create a separation between low-level vegetation and tree canopies to keep fire from climbing into trees.</li> <li>Remove leaf and needle debris from the yard.</li> <li>Keep lawns, native grasses, and wildflowers less than four inches in height.</li> <li>Store firewood and other combustible materials away from outbuildings such as a shed or barn.</li> <li>Move trailers, recreational vehicles, storage sheds, and other combustible structures out of this zone and into Zone 2. If unable to move, create defensible space around them as if they were a part of your home.</li> </ul>	<b>30-100 feet around your home or to property line</b> <ul style="list-style-type: none"> <li>Create and maintain a minimum of 10 feet between the tops of trees.</li> <li>Safely remove ladder fuels up to a height of 10 feet, while retaining at least 75 percent of the foliage, to create separation between the ground and tree branches. This keeps fire from climbing into the tree canopies.</li> <li>Store firewood in this area, keeping it a safe distance from your structure.</li> <li>Create space between shrubs and trees to eliminate a continuous fuel bed at the ground level.</li> <li>Remove dead trees, shrubs, and all other dead or dry vegetation.</li> <li>Create separation between your property and your neighbors. Consider that your trees may pose a greater risk to your neighbor's home than to your own.</li> </ul>

### Remember the Ember Zone

Embers are burning pieces of airborne material that can be carried more than a mile by the wind. Research points to embers and small flames as the main ways homes ignite in wildland fires.



## Zone 0 Guidelines for Existing Structures - Zone 0 Phased Compliance Plan

San Diego Fire-Rescue understands there will be a cost impact on property owners to comply with the State-mandated Zone 0 program. Therefore, a plan to achieve compliance will be phased over a (3) year period until February 28, 2029.

- **1. Year 0 (beginning Feb 28, 2026) – Education**
  - a. Proactive door-to-door public education
  - b. Community outreach
- **2. Year 1 (beginning Feb 28, 2027) - Maintenance**
  - a. Removal of dead vegetation and accumulation of debris
  - b. Relocation of firewood piles, trash bins, and other stored combustible materials
  - c. Relocation of under-deck storage
  - d. Removal of any items or vegetation that creates a significant fire hazard as determined by the fire code official
- **3. Year 2 (beginning Feb 28, 2028) – Vegetation Removal**
  - a. Continued focus on the removal of vegetation that does not fully comply with these guideline
  - b. Replacement of existing vegetation with Fire-Smart vegetation
- **4. Year 3 (beginning Feb 28, 2029) – Full Compliance**
  - a. Homeowners should attempt to achieve full compliance with Zone 0 regulations by February 28, 2029. This includes replacing fences and gates that do not comply with the provisions of this guidance document.
  - b. For detached non-habitable structures like pergolas, gazebos, outbuildings, and unique situations such as historic trees and structures, a longer-term Compliance Plan beyond 2029 will be offered to achieve full compliance. If compliance cannot be achieved, homeowners may be given the option to sign an affidavit acknowledging that the San Diego Fire-Rescue Department has identified a condition posed by materials likely to be ignited by embers.

# SD Fire-Rescue - Zone 0 Guidelines for Existing Structures


<https://www.sandiego.gov/fire/community-risk-reduction/defensible-space-property-owners>







**SD Fire-Rescue**  
**Fire-Smart Vegetation**

All plants will burn under extreme fire weather conditions, such as drought. However, plants burn at different intensities and rates of consumption. Fire-smart plants burn at a relatively low intensity, slow rates of spread and with short flame lengths. The following are characteristics of fire-smart vegetation:

 Little or No Accumulation of Dead Vegetation	 Nonresinous Plants (Willow, Poplar or Tulip Trees)	 Low Volume of Total Vegetation	 Plants with High Live Fuel Moisture
 Drought-Tolerant Plants	 Stands Without Ladder Fuels	 Plants Requiring Little Maintenance	 Fire-Resistant Woody Stems (Hard to ignite)



**SD Fire-Rescue**  
**Likely to be Ignited by Embers**

Vegetation and Organic Materials	Stored Combustible Materials	Combustible Landscape Features	Common Locations of Ember Ignition
 <ul style="list-style-type: none"><li>• Dry leaves or pine needles</li><li>• Bark mulch or shredded wood mulch</li><li>• Dead grass or weeds</li><li>• Dry plant material or unmaintained vegetation</li><li>• Accumulated leaf litter in landscape beds</li></ul>	 <ul style="list-style-type: none"><li>• Firewood or lumber</li><li>• Wood chips or compost piles</li><li>• Cardboard or paper products</li><li>• Stored building materials</li></ul>	 <ul style="list-style-type: none"><li>• Wood planters or planter boxes</li><li>• Wooden landscape edging</li><li>• Timber retaining walls</li><li>• Trellises or wood lattice near the structure</li></ul>	 <ul style="list-style-type: none"><li>• Landscape beds next to exterior walls</li><li>• Under decks or stairs</li><li>• Against fences attached to the structure</li><li>• In corners where debris accumulates</li><li>• In roof gutters or the base of walls</li></ul>

# SD Fire-Rescue - Zone 0 Guidelines for Existing Structures

<https://www.sandiego.gov/fire/community-risk-reduction/defensible-space-property-owners>

**SD Fire-Rescue**  
**Guidance on Trees**


Research from the National Institute of Standards and Technology (Technical Note 2205) shows that most home fires are caused by wind-driven embers, not by flames from nearby trees. When trees are well maintained—pruned, free of dead material, and not touching the home—they are unlikely to produce enough heat to start a fire.


**“ Can I keep my tree? ”**

- My tree is healthy
- No contact with structure
- 10ft clearance from the roof and chimney
- No fuel build-up beneath the tree

**“ Why do trees become fire risks? ”**

- Embers collect in leaves and debris
- Flames climb from the ground (ladder fuels) into the canopy
- Branches touching homes = direct fire path
- Radiant heat from dense vegetation ignites structures

  
Maintains 10ft clearance from roof and chimney

  
Branches extend within 10ft at roofline and chimney  
Dead and unmaintained branches present  
Leaf litter and debris accumulation below tree

**SD Fire-Rescue**  
**Guidance on Trees**

**Right Tree, Right Place, Well Maintained!**  
Select trees that fit the space and allow room for full growth. Keep them trimmed away from your home and clear of debris underneath. Proper placement and care will help reduce wildfire risk over time.


**“ When is tree removal required? ”**

- High risk species (resinous, heavy ember production)
- Poor conditions (dead/diseased)
- Inability to maintain clearance
- Excessive fuel accumulation



**“ How do I maintain my tree? ”**

- Prune: Remove dead/dying branches
- Separate: Keep branches off structures
- Clear: Remove leaves/debris underneath
- Thin: Remove ladder fuels (shrubs, low branches, minimum 6' or 1/3 the height of the tree)

  
Ladder fuel pruning zone  
Ladder fuel pruning zone = understory vegetation height

## CAL Fire Vertical Spacing:

- Maintain space between the lowest tree branches and the ground or shrubs.
- Remove all tree branches at least six feet from the ground.
- Allow extra vertical space between shrubs and trees. Lack of vertical space can allow a fire to move from the ground to the brush to the treetops like a ladder. This leads to more intense fire closer to your home.
- Keep at least three times the height of any shrubs between the shrubs and the lowest branches of trees.



**FIRE SAFE  
COUNCIL**  
of San Diego County



**FireSafe Council**  
UNIVERSITY CITY

## CAL Fire Horizontal Spacing:

- Horizontal space depends on the slope of the land and the height of the shrubs or trees. Leave more space between vegetation on steeper slopes.

### Space between shrubs:

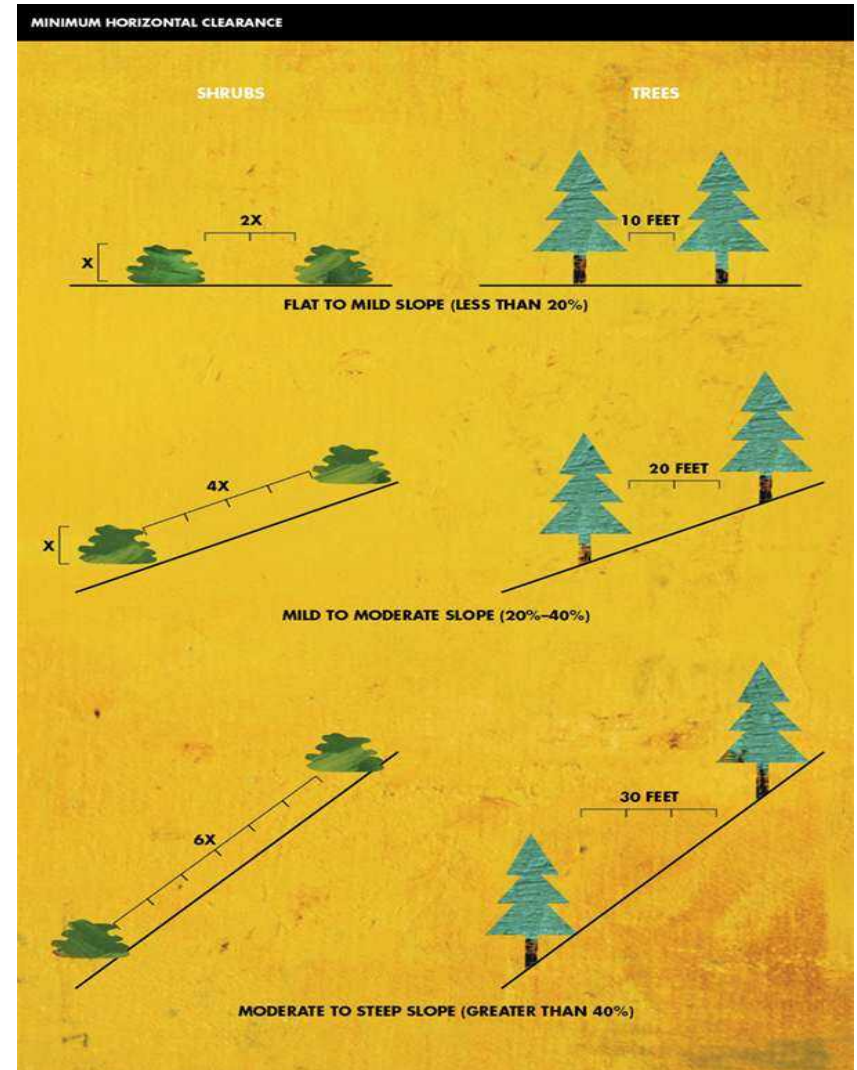
- Flat or mild slope (less than 20%): Two times the height of the shrub.
- Mild to moderate slope (20-40%): Four times the height of the shrub
- Moderate to steep slope (greater than 40%): Six times the height of the shrub

### Space between trees:

- Flat or mild slope (less than 20%): 10 feet.
- Mild to moderate slope (20-40%): 20 feet.
- Moderate to steep slope (greater than 40%): 30 feet.



**FIRE SAFE  
COUNCIL**  
of San Diego County



## CAL Fire: Useful resources for fire-smart landscaping

[readyforwildfire.org/prepare-for-wildfire/fire-smart-landscaping](https://readyforwildfire.org/prepare-for-wildfire/fire-smart-landscaping)

- **California Invasive Plant Council Landscaping Guidelines** : <https://www.cal-ipc.org/solutions/prevention/landscaping/dpp/>
- **Safe Landscapes in the Wildland-Urban Interface** : <https://ucanr.edu/site/safer-sustainable-and-fire-resistant-landscapes>
- **Tree Care Information from International Society of Arboriculture** : <https://www.treesaregood.org/>
- **Landscaping for Wildfire Preparation and Recovery** : <https://ucanr.edu/program/uc-anr-fire-network/prepare-your-landscaping>
- **Select Tree: A Tree Selection Guide** : <https://selecttree.calpoly.edu/>
- **Invasive Weeds Awareness – California Native Plant Society** : <https://www.cnps.org/gardening/digging-deeper/invasive-weeds>



**Fire Safe Your Landscape**  
presented by  
**University City Fire Safe Council**

**Saturday, May 16, 10 to 12 noon**  
**Standley Park**  
**3585 Governor Drive**  
**University City**



**Activities for Kids & Adults**

**High Fire Hazard Zones**

**Zone Zero and Fire-Smart Vegetation**

**Canyon Concerns**

**Home Hardening**

**Fire Escape**

**Fire Truck Visit**  
(scheduled at 10 am)

**Give-aways & Games**

For more, visit:  
[universitycitynews.org/fire-safe-council-university-city](http://universitycitynews.org/fire-safe-council-university-city)



# Fire Safe Your Landscape

Saturday, May 16, 10 to 12 noon  
Standley Park between the Rec Center & Swanson

Pick up copy of:

- **Ready Set Go** – Vegetation Zones, Home Hardening, Evacuation Planning
- **Fire Smart Vegetation** CA FSC
- **CAL Fire Resources** for Fire Safe Landscaping

Learn more about:

- **Home Hardening**
- **High Fire Hazard Zones**
- **Evacuation Planning**
- **Zones 0 , 1, 2 and Fire Smart Landscaping**

**Fire Fighter visit from Station 50**

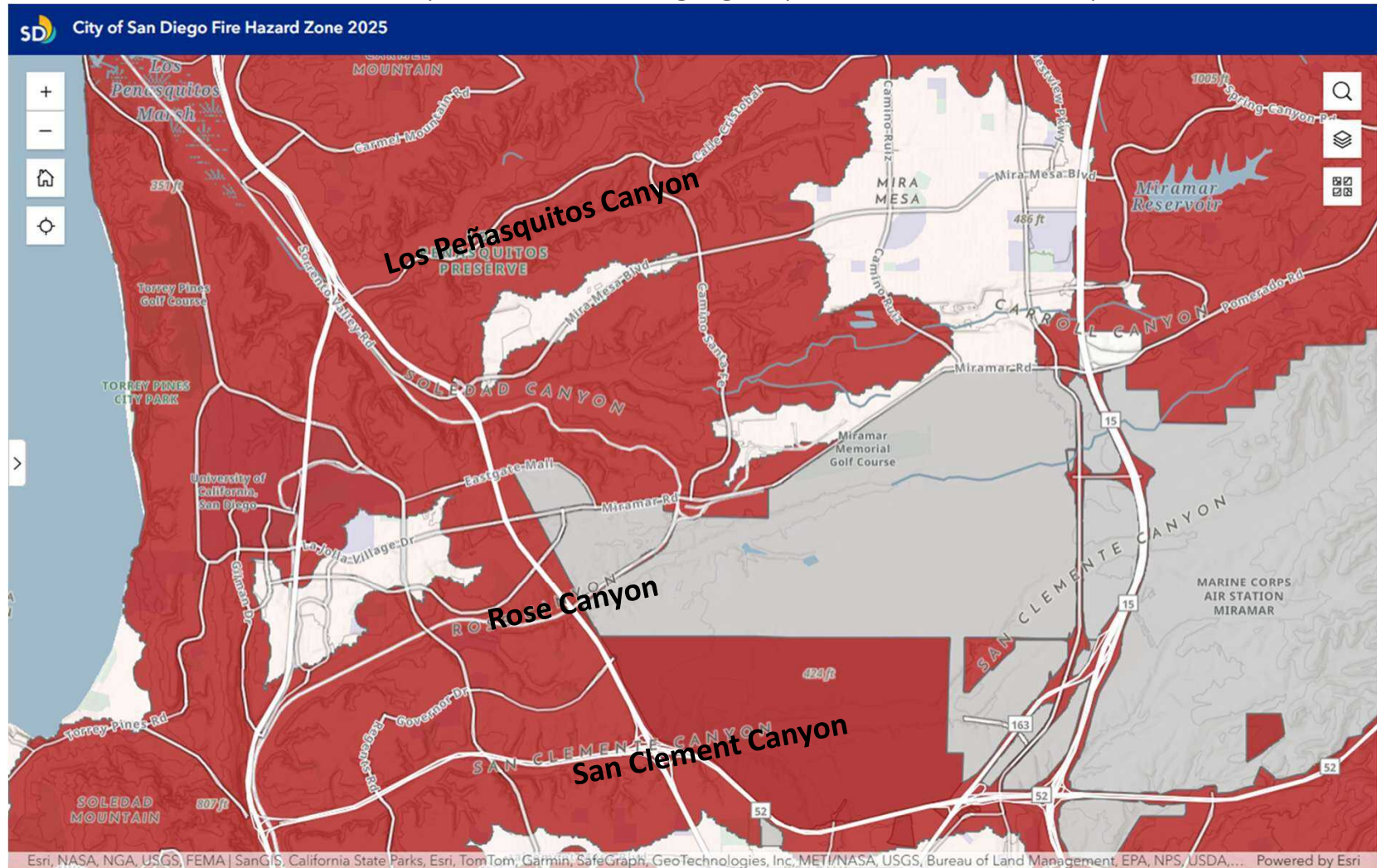


SD Fire-Rescue Department



# City Open Space Parks – Rose and San Clemente Canyons

Habitat Conservation Areas - <https://www.sandiego.gov/park-and-recreation/parks>



**Brush Management Schedule and Area Maps**

**\*All dates are subject to change due to field conditions**

Last updated February 20, 2026

- [City Overview](#) (PDF)

Work Area	Name	Start*	Finish*	Status
1	<a href="#">Tierrasanta</a> (PDF)	April 6, 2026	April 12, 2027	Upcoming
2	<a href="#">Del Cerro</a> (PDF)	February 6, 2025	November 29, 2025	Complete
3	<a href="#">Scripps Ranch</a> (PDF)	April 29, 2024	September 12, 2025	Complete
4	<a href="#">Del Mar Heights</a> (PDF)	August 6, 2024	January 15, 2025	Complete
5	<a href="#">Mission Valley and Hills</a> (PDF)	June 1, 2025	February 20, 2026	Complete
6	<a href="#">Tecolote Canyon</a> (PDF)	September 10, 2025	December 23, 2025	Complete
7	<a href="#">East San Diego</a> (PDF)	January 5, 2026	October 1, 2026	In Progress
8	<a href="#">Marian Bear</a> (PDF)	May 12, 2025	January 19, 2026	Complete
9	<a href="#">West Otay</a> (PDF)	February 23, 2026	April 17, 2026	In Progress
10	<a href="#">Los Peñasquitos</a> (PDF)	February 23, 2026	September 30, 2026	In Progress
11	<a href="#">Black Mountair</a> (PDF)	April 20, 2026	November 15, 2026	Upcoming

**From: <https://www.sandiego.gov/sites/default/files/brushprioritymaplist.pdf>**

## Brush Trimming Guideline

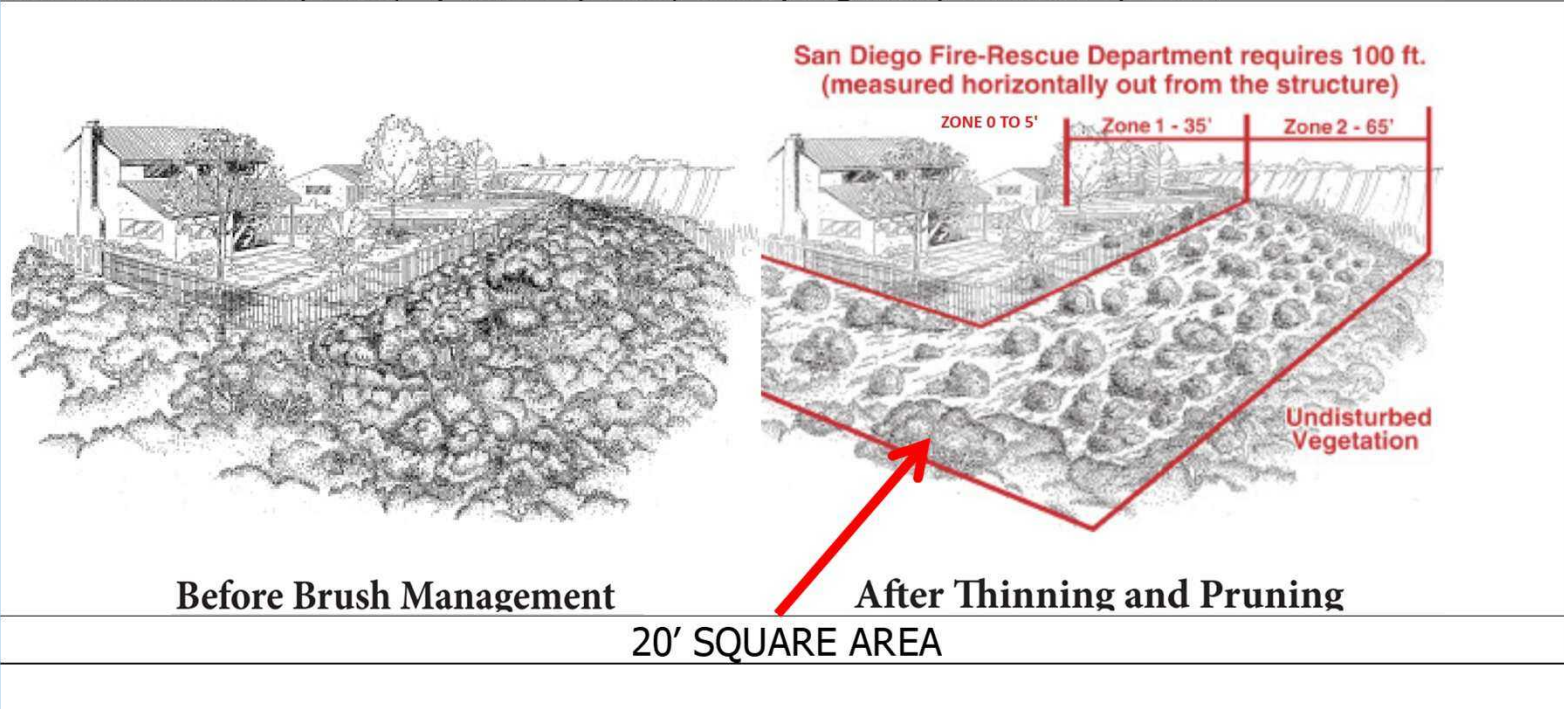
City-Owned Open Space Parks Brush Management Program

[www.sandiego.gov/park-and-recreation/parks/osp/brush](http://www.sandiego.gov/park-and-recreation/parks/osp/brush)

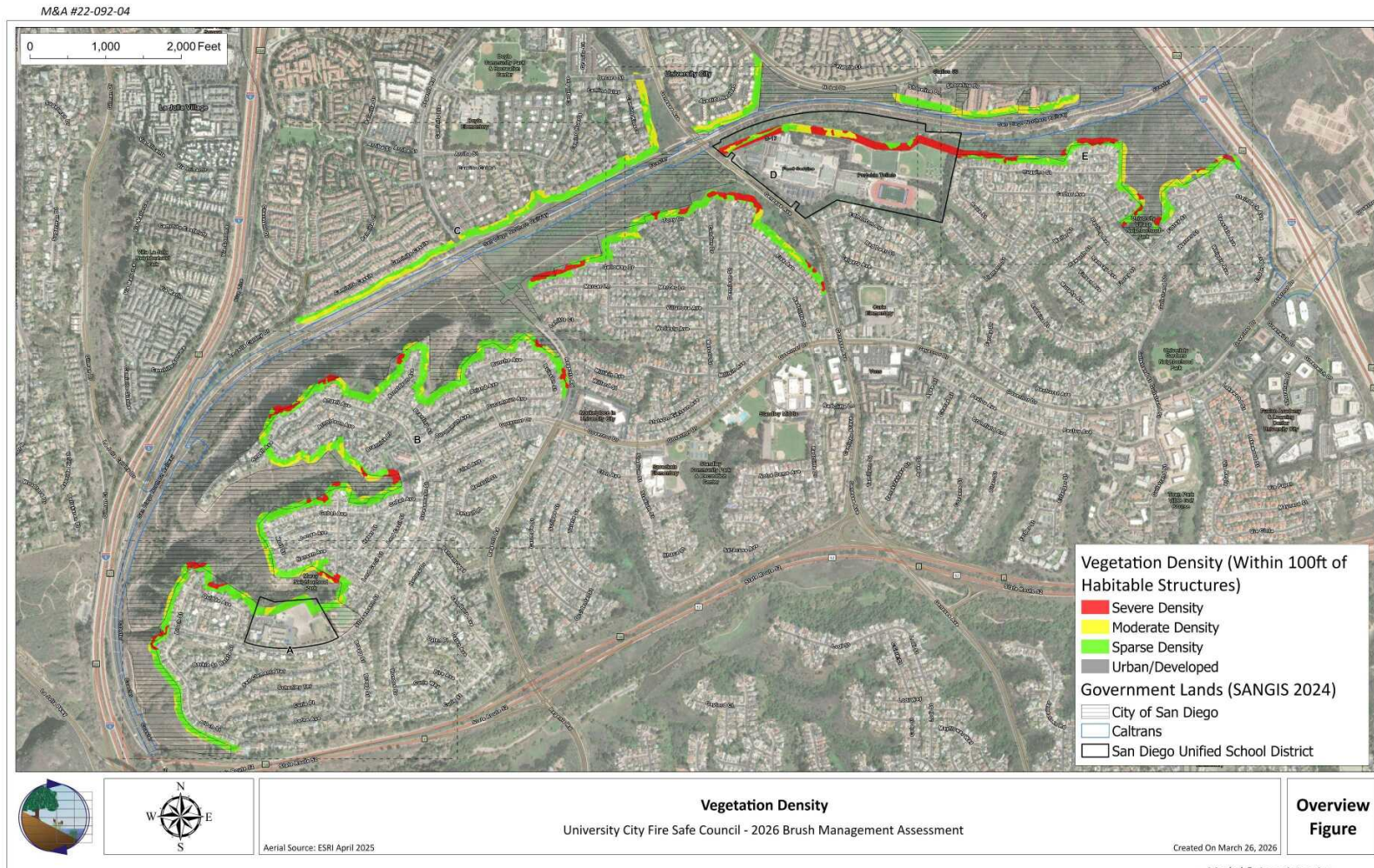
### From Brush Trimming Guide

<https://www.sandiego.gov/sites/default/files/brushpdf.pdf>

Start in Zone 2 area by trimming 50% of the plants over 2 feet in height to a height of 6 inches. Don't go any lower than 6 inches so the roots remain to control soil erosion. Trim in a "staggered" pattern. Leave uncut plant groupings up a 20 x 20-foot area separated by groupings of plants. Thinning should **be prioritized as** follows: 1) invasive non-native species; 2) non-native species; 3) flammable native species; 4) native species; and 5) regionally sensitive species.



# Brush Density Assessment of Rim of Rose Canyon – March 2026

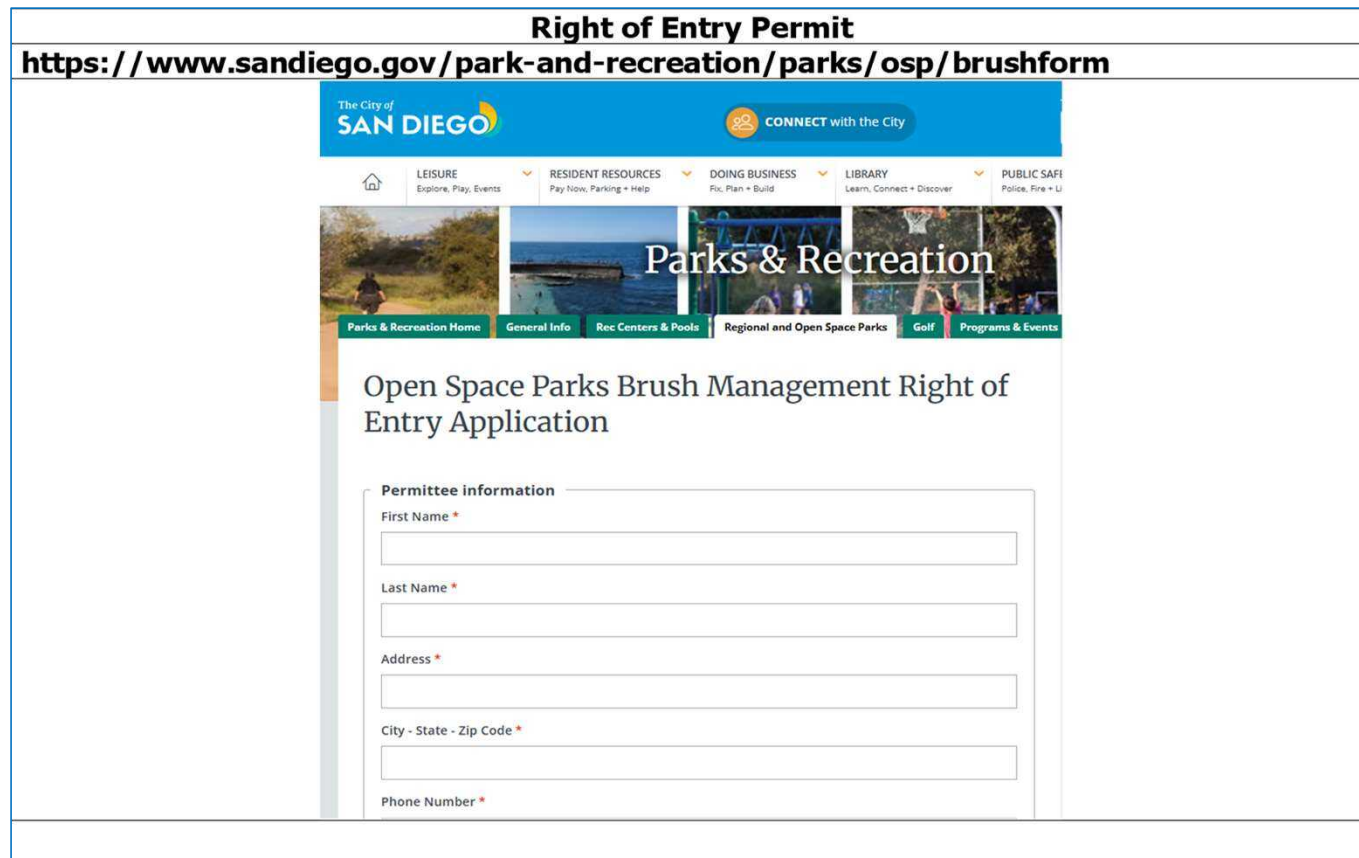


## DYI Brush Management in City–Owned Open Space (Along Canyon Rims)

*City of San Diego Open Space Parks Brush Management Program* [www.sandiego.gov/park-and-recreation/parks/osp/brush](http://www.sandiego.gov/park-and-recreation/parks/osp/brush)  
*Brush Management Information:* [https://www.sandiego.gov/sites/default/files/2025-01/brush\\_management\\_information.pdf](https://www.sandiego.gov/sites/default/files/2025-01/brush_management_information.pdf)

### Right of Entry Permit

<https://www.sandiego.gov/park-and-recreation/parks/osp/brushform>



The screenshot shows the City of San Diego website's navigation bar with the logo and a 'CONNECT with the City' button. Below the navigation bar is a 'Parks & Recreation' banner with several menu items: 'Parks & Recreation Home', 'General Info', 'Rec Centers & Pools', 'Regional and Open Space Parks', 'Golf', and 'Programs & Events'. The main content area features the title 'Open Space Parks Brush Management Right of Entry Application' and a form titled 'Permittee information'. The form includes input fields for 'First Name \*', 'Last Name \*', 'Address \*', 'City - State - Zip Code \*', and 'Phone Number \*'.

**Permittee information**

First Name \*

Last Name \*

Address \*

City - State - Zip Code \*

Phone Number \*



<https://www.sandiego.gov/fire/community-risk-reduction/citizen-complaint-inspections>

## Complaints Related to Brush Management or Weed Abatement

Before submitting your complaint, please review the **Brush Complaint Process** section below to ensure a smooth and efficient submission. This will help SDFD address your concern as promptly and effectively as possible.

### Brush Complaint Process

- 1 Verify the Property Address
- 2 Complaints on City Owned Land
- 3 Complaints on Privately Owned Land
- 4 Other Weed Abatement and Brush Complaints

# Performance Audit of Brush Management on Private Property

[www.sandiego.gov/auditor](http://www.sandiego.gov/auditor)

## Performance Audit of Brush Management on Private Property

MAY 2026 | OCA-26-08

### Finding 1

Fire-Rescue should substantially strengthen inspection efficiency and accountability to better mitigate the risk of wildfire damage and destruction.

### Finding 2

Improving inspection follow-through and enforcement is critical to enhance program effectiveness and further mitigate risk to neighborhoods and properties.

Andy Hanau, City Auditor  
Matthew Helm, Assistant City Auditor  
Nathan Otto, Principal Performance Auditor  
Marye Sanchez, Senior Performance Auditor



- Finding 1 - Fire-Rescue should substantially strengthen inspection efficiency and accountability to better mitigate the risk of wildfire damage and destruction.
- Finding 2 - Improving inspection follow-through and enforcement is critical to enhance program effectiveness and further mitigate risk to neighborhoods and properties.
  - Brush Management Regulations:  
[www.sandiego.gov/sites/default/files/legacy/fire/pdf/brushpdf.pdf](http://www.sandiego.gov/sites/default/files/legacy/fire/pdf/brushpdf.pdf)
  - Guide to Defensible Space:  
[www.sandiego.gov/fire/community-risk-reduction/defensible-space-property-owners](http://www.sandiego.gov/fire/community-risk-reduction/defensible-space-property-owners)

SD Fire-Rescue Department



## Your Personal Fire Action Plan - Ready Set Go!

### Get Ready

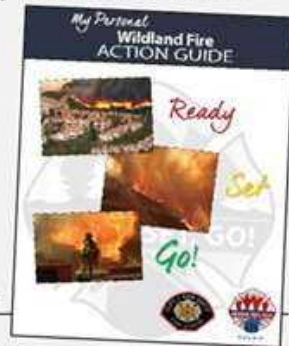
- ✓ Sign up for emergency notifications; know two ways out of home and neighborhood.
- ✓ Zone Zero - Move combustible material from around your home.
- ✓ Vegetation Management - Create space between your home and vegetation.
- ✓ Home Hardening - Make your home fire resistant to prevent ember intrusion.

### Prepare and Be Aware

- ✓ Update your Go Kit with essentials.
- ✓ Alert family members and think about your pets.
- ✓ Monitor local fire conditions.

### Act Early

- ✓ Leave before the fire threat reaches your home.
- ✓ Stay aware of current conditions.
- ✓ Cooperate with local authorities during evacuations.



For more information, contact the Fire Safe Council at [UCFireSafeCouncil@gmail.com](mailto:UCFireSafeCouncil@gmail.com)



SDFD: [sandiego.gov/fire/community-risk-reduction/wildfire-preparedness](http://sandiego.gov/fire/community-risk-reduction/wildfire-preparedness)

UC FSC: [universitycitynews.org/UCCA/FireSafeCouncil](http://universitycitynews.org/UCCA/FireSafeCouncil)

Ready Set Go! Pre-Plan for Fire  
<https://www.sandiego.gov/fire/community-outreach/safety-tips/ready-set-go>



[www.readyforwildfire.org/prepare-for-wildfire/wildfire-preparedness-week](http://www.readyforwildfire.org/prepare-for-wildfire/wildfire-preparedness-week)



## 1-Hour Wildfire Ready Checklist



Improving your home's wildfire preparedness can take just 1 hour! Check out the guide below to taking the first steps to wildfire preparedness!



### 00:00 - 30:00 | Improve Defensible Space

- Cut dry grass and weeds to no more than 4 inches within 30 feet of your home. Remember not to use metal cutting blades when cutting dry grass and weeds!
- Clear combustible materials (dry plants, outdoor furniture) from within 5 feet of your home. Remember, wood piles should be at least 30' away or completely protected by an ignition cover.
- Ensure lawns and ornamental plants are well maintained prior to an emergency.



### 30:00 - 45:00 | Strengthen Your Home & Fireproof the Perimeter

- Move smaller or portable propane tanks and gas grills at least 10 feet from your home.
- Check vents for gaps and cover them with 1/8-inch metal mesh to block embers.



### 45:00 - 50:00 | Emergency Readiness

- Don't forget about your pets. Make a plan for their safety. Have carriers, food, and water ready so they can leave quickly and safely with you.

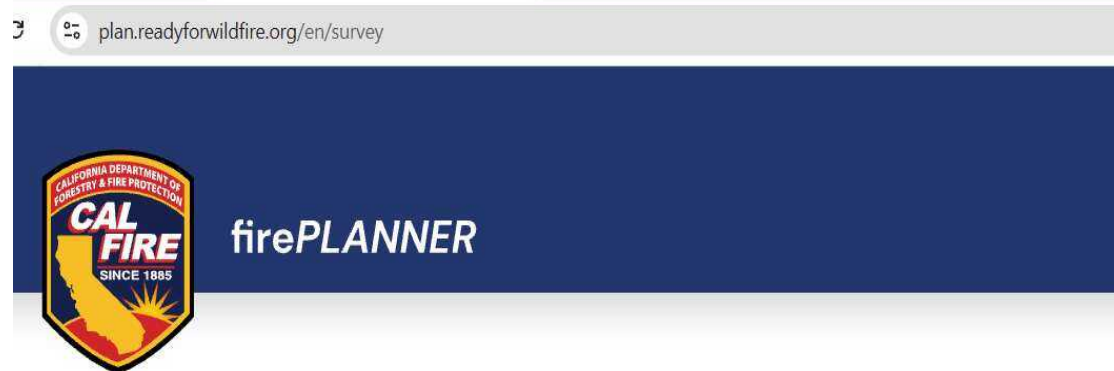


### 50:00 - 60:00 | Final Safety Check

- Identify at least two evacuation routes and discuss them with family members.
- Double-check your go-bag with essentials (documents, medications, supplies)
- Sign up for local emergency alerts and check battery-powered radios.

In just one hour, you've taken the first crucial steps to protect your home from wildfires!

<https://plan.readyforwildfire.org/en/survey>



# Get your custom wildfire preparedness plan

Based on your answers, your personalized preparedness plan will be created! Use the custom checklists below to prepare for wildfire.



## 2026 - New Laws - **California Wildfire Task Force** - Wildfire & Forest Resilience

<https://wildfiretaskforce.org/new-laws-strengthen-home-hardening-insurance-access-and-wildfire-risk-transparency/>

### *New Laws Strengthen Home Hardening, Insurance Access, and Wildfire Risk Transparency*

CAL Fire YouTube Zone Zero / Home Hardening: <https://www.youtube.com/watch?v=AYvwogREEk4>



- **California Safe Homes Act (AB 888)**
  - to Strengthen Home Hardening
- **Insurance and Wildfire Safety Act (AB 1)**
  - for Insurance Access
- **California Wildfire Public Model Act (SB 429)**
  - for Wildfire Risk Transparency



**FIRE SAFE  
COUNCIL**  
of San Diego County



**FireSafe Council**  
**UNIVERSITY CITY**

SB 79



Qualifying Trolley and Bus Stops

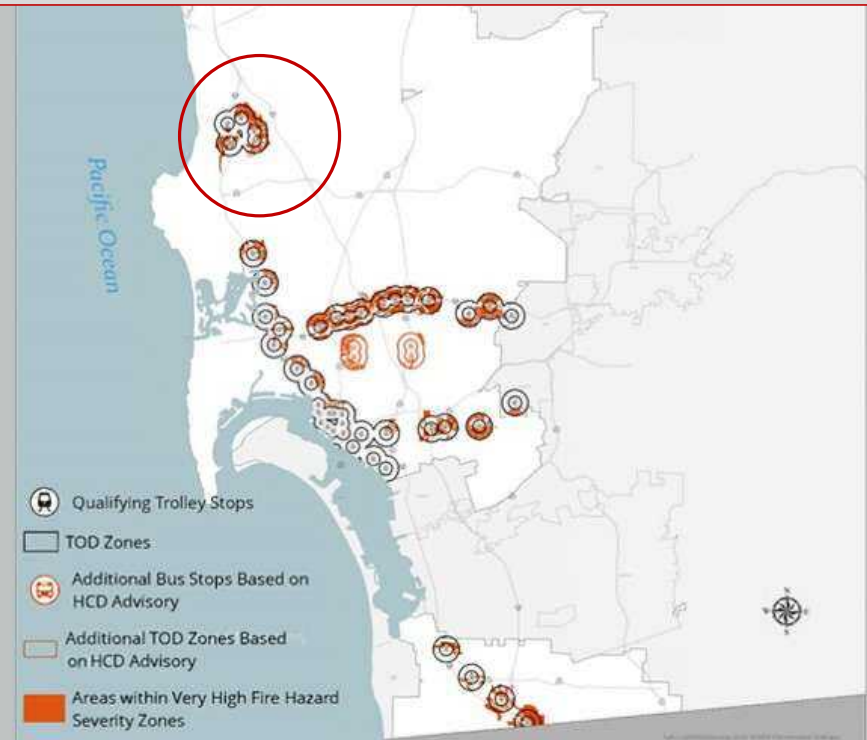
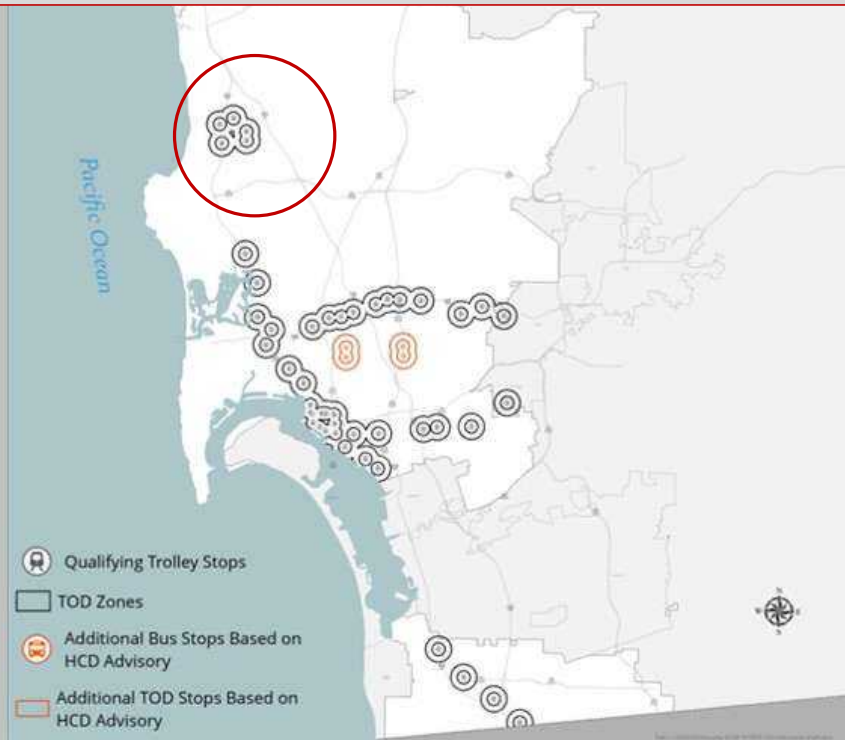
SB 79



Very High Fire Hazard  
Severity Zones

# SB 79 – Transit Oriented Development near Trolley Stops

[www.sandiego.gov/planning/work/senate-bill-79](http://www.sandiego.gov/planning/work/senate-bill-79)



## *Home Insurance Resources from CA Dept of Insurance CA FAIR Plan :*

<https://www.insurance.ca.gov/01-consumers/200-wrr/California-FAIR-Plan.cfm>



- **Shop the market.** State of California tips for finding insurance: [https://www.insurance.ca.gov/01-consumers/105-type/5-residential/Top10Tips\\_FindingResidentialIns.cfm](https://www.insurance.ca.gov/01-consumers/105-type/5-residential/Top10Tips_FindingResidentialIns.cfm)
- Still having difficulty obtaining residential or commercial insurance?
  - Apply for coverage under the CA FAIR Plan through an agent or broker licensed to sell property insurance.
  - Contact the FAIR Plan directly through website at : <https://www.cfpnet.com/>
  - CA Dept of Insurance recommends you contact a licensed insurance broker that is registered to sell FAIR Plan coverage. Find a Broker: [https://interactive.web.insurance.ca.gov/apex\\_extprd/f?p=400:50](https://interactive.web.insurance.ca.gov/apex_extprd/f?p=400:50)
  - CA Fair Plan: <https://www.cfpnet.com/>



# Zone Zero and Brush Management Zones

## California Assembly Bill 3074 (AB 3074)

<https://www.sandiego.gov/fire/community-risk-reduction/defensible-space-property-owners>

The screenshot shows the City of San Diego Fire-Rescue Department website. The header includes the city logo, a search bar, and navigation menus for various services like Leisure, Resident Resources, and Public Safety. The main content area features a large banner image of fire trucks and a navigation bar with categories such as Fire-Rescue Home, About SDFD, Careers, and Community Outreach. The primary article is titled "Guide to Defensible Space: Property Owners" and includes a table of contents, an introductory paragraph about the wildland-urban interface, and a photograph of a residential area on a hillside. A sidebar on the right lists various "Community Risk Reduction" resources.

The City of SAN DIEGO CONNECT with the City

78° Translate

Search sandiego.gov

LEISURE Explore | Play | Events RESIDENT RESOURCES Pay Now | Parking | Help DOING BUSINESS Fix | Plan | Build LIBRARY Learn | Connect | Discover PUBLIC SAFETY Police | Fire | Lifeguards CITY HALL City Officials | Departments

Fire-Rescue Home About SDFD Careers Community Outreach Community Risk Reduction News Center Permits & Fees Records & Forms Training & Education

### Guide to Defensible Space: Property Owners


On this page:

- [Why Brush Management Matters](#)
- [Brush Management Zones](#)
- [Zone 0](#)
- [Zone 1](#)
- [Zone 2](#)
- [Timeframes & Sensitive Habitats](#)
- [Other Resources](#)

#### Why Brush Management Matters

The city of San Diego has over 500 linear miles of wildland-urban interface, which is where homes meet dense vegetation in canyons and other open space areas. Years of drought worsened by climate change have increased the risk for dangerous wildfires to occur in these areas.

**Defensible space** is the buffer zone you should create around a structure to protect it. Creating and maintaining defensible space around your home helps slow or stop the spread of wildfire and gives firefighters room to safely defend your property from flames and wind-driven embers.



#### Community Risk Reduction

- [Community Risk Reduction Home](#)
- [Citizen Complaint Inspections](#)
- [Codes & Regulations](#)
- [False Alarm Program](#)
- [Fire Protection Systems](#)
- [Grant Funded Projects](#)
- [Inspection Services](#)
- [Knox Box Program](#)
- [Policies](#)
- [Wildfire Preparedness](#)
- [Wildfire Prevention and Mitigation](#)
- [Very High Fire Hazard Severity Zones](#)

[View the MHPA boundary](#)

[View MSCP Covered Species](#)

[Find out what kind of biological resources are on my property](#)

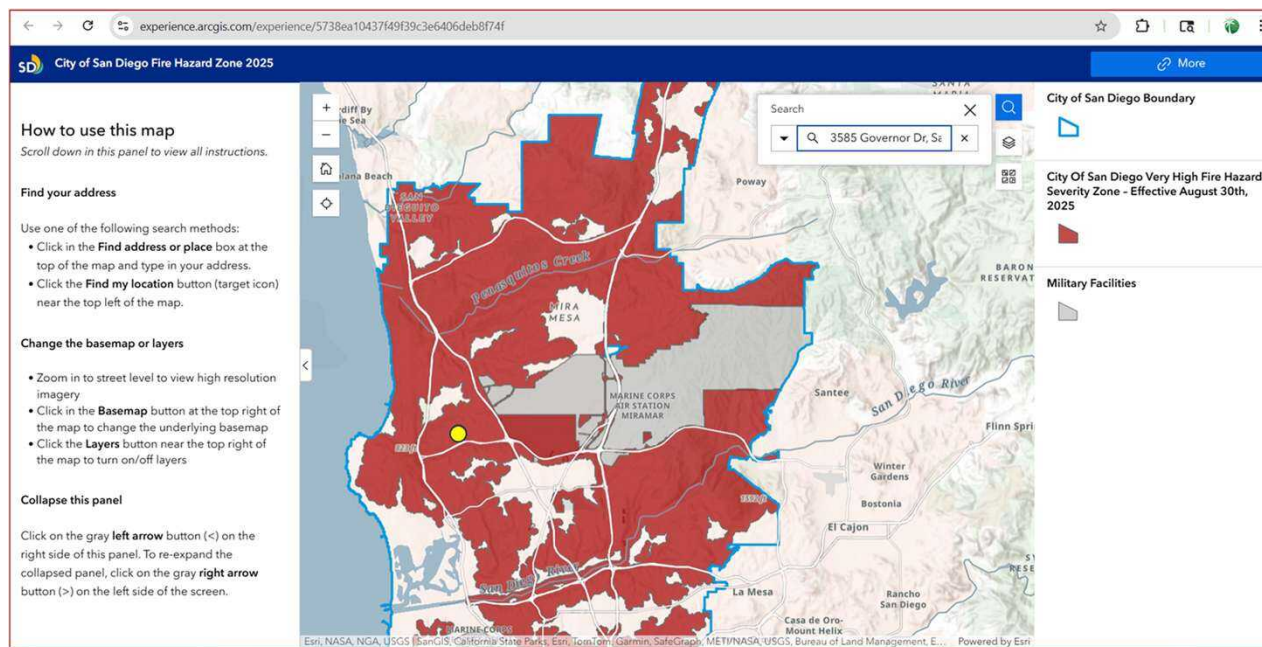
[View Land Development Code](#)

[View land use adjacency guidelines](#)

[View MSCP Rare Plant Monitoring Plan Revision](#)

# High Fire Hazard Severity Zones

<https://www.sandiego.gov/fire/community-risk-reduction/fire-hazard-severity-zones>



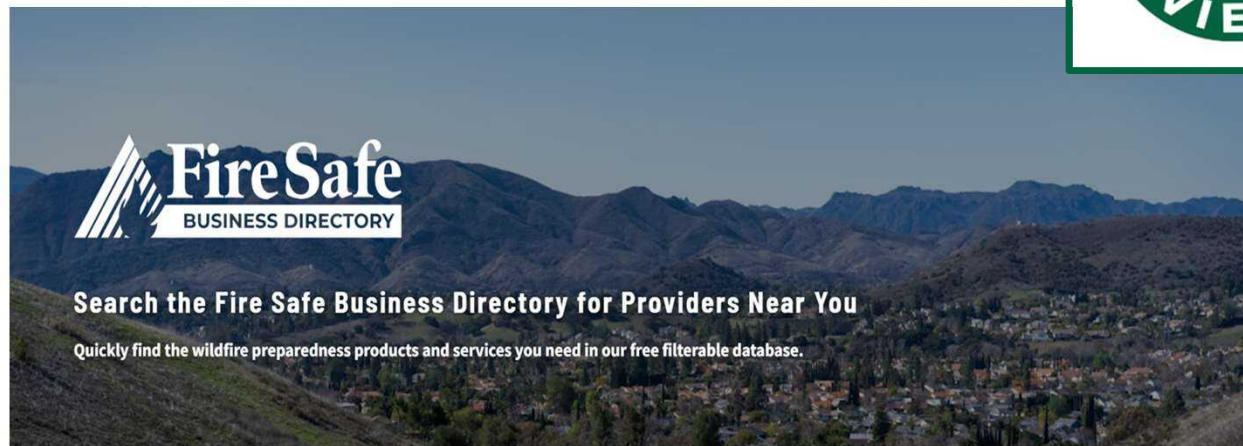
**FIRE SAFE  
COUNCIL**  
of San Diego County



**FireSafe Council**  
UNIVERSITY CITY

# Fire Safe Business Directory

<https://cafiresafecouncil.org/about-fire-safe-business-directory/>



# *Evacuation Planning with Genasys Protect*

<https://protect.genasys.com/search>



KNOW YOUR  
**Z****NE**

Find your zone now at  
**protect.genasys.com**



**FIRE SAFE  
COUNCIL**  
of San Diego County



**FireSafe Council**  
**UNIVERSITY CITY**

# San Diego Fire-Rescue resources

- Fire-Rescue : <https://www.sandiego.gov/fire>
- Guide to Defensible Space for Property Owners : <https://www.sandiego.gov/fire/community-risk-reduction/defensible-space-property-owners>
- Home Risk Assessment : <https://www.sandiego.gov/fire/community-risk-reduction/defensible-space-property-owners#resources>
- Very High Fire Hazard Severity Zones : <https://www.sandiego.gov/fire/community-risk-reduction/fire-hazard-severity-zones>
- Brush Management Guide Definitions : <https://www.sandiego.gov/fire/community-risk-reduction/wildland-management-enforcement/definitions>
- Wildfire Preparedness : <https://www.sandiego.gov/fire/community-risk-reduction/wildfire-preparedness>
- Stay Informed : <https://www.sandiego.gov/oes/informed>
- University City Fire Safe Council : <https://www.universitycitynews.org/fire-safe-council-university-city/>



**FIRE SAFE  
COUNCIL**  
of San Diego County



**FireSafe Council**  
**UNIVERSITY CITY**



**Join Us to Learn How to  
Fire Safe Your Landscape**

**Selecting and Strategically Placing Fire Safe Plants  
Maintaining Landscape for Wildfire Safety**

- **Create Defensible Space** to make a fire break around your place
- **Harden Your Home** to make your home less likely to burn
- **Pre-Plan for Evacuation** to get out of home and neighborhood

**Monday, May 11, 6 pm via Zoom**

Join Zoom : [bit.ly/ZoomFireSafeCouncilUniversityCity](https://bit.ly/ZoomFireSafeCouncilUniversityCity)



[www.universitycitynews.org/UCCA/FireSafeCouncil](http://www.universitycitynews.org/UCCA/FireSafeCouncil)

Fire-resistant does not mean fireproof!

Even fire-resistant plant will burn if not well maintained.

Keep all landscape plants healthy with appropriate water, proper pruning and care.



**Fire Safe Your Landscape**  
presented by  
**University City Fire Safe Council**  
**Saturday, May 16, 10 to 12 noon**  
**Standley Park**  
**3585 Governor Drive**  
**University City**



- Activities for Kids & Adults**
- High Fire Hazard Zones**
- Zone Zero and Fire-Smart Vegetation**
- Canyon Concerns**
- Home Hardening**
- Fire Escape**
- Fire Truck Visit (scheduled at 10 am)**
- Give-aways & Games**

For more, visit:  
[universitycitynews.org/fire-safe-council-university-city](http://universitycitynews.org/fire-safe-council-university-city)



SD Fire-Rescue Department

